

3531

Department of Commerce and Labor
COAST AND GEODETIC SURVEY

Superintendent.

State: _____

DESCRIPTIVE REPORT.

Sup. Sheet No. 3531

LOCALITY:

191

CHIEF OF PARTY:

See report # 5311 for
discrepancies in location
of signals.

DESCRIPTIVE REPORT.

3531

No. Accompany. topog. sheet "C", sta. Pua Pua to Lanaloa Hd. Moikai Island "H."

LIST of POSITIONS T-3531

to accompany topog. sheet "C," sta. Puu Papai to Lamaloa Hd., Island of Molokai, T.H.
April, 1915.

Eoline R. Hand, Asst., Chief of Party.

Suggestions for offshore, and landmarks *

Name	Ø	D. M.	λ	D. P.	hei.	Description. and symbols.
Stn.	21' 10"		156° 44'		75	Paint on cliffs N. of beach at Lamaloa Hd.
Oil	10'		44'			" " huge boulder, N. end beach at Halawa.
Spit	21' 38"		44'			" " wall at spit.
Is.	28'		44'			Concrete piloted "sided" on island.

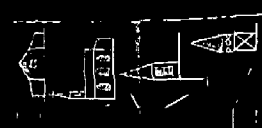
LIST of POSITIONS T-2531

mapary topog. sheet "C" sta. Pau Rapai to Lamalera Ids, Island of Molokai, T.H. Eoline R. Hana, Assoc. Chief of Party.

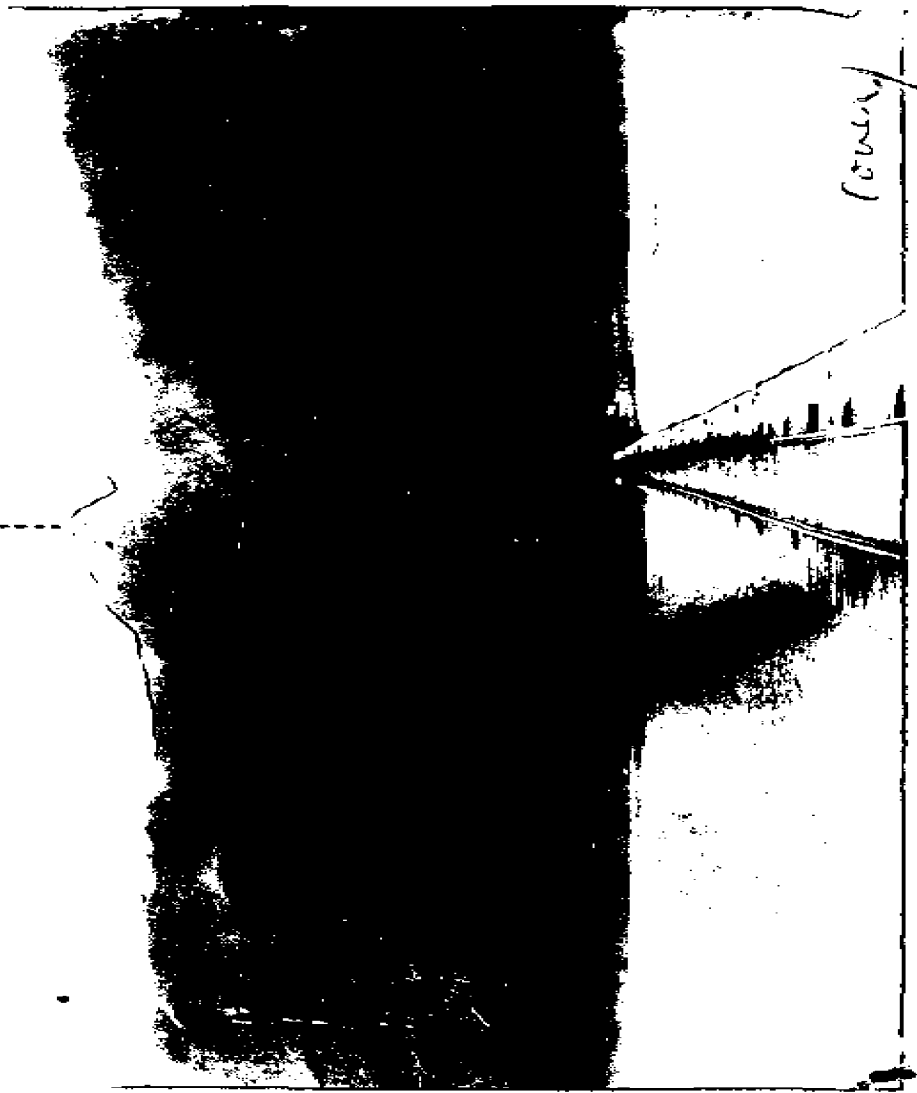
1915

ns for offshore, and land marks *

ST. M.	λ	ST. P.	DESCRIPTION, AND SYMBOLS.
10	156° 44'	75	point on cliffs near beach at Lamalera Ids.
10	44'		" " huge boulder, N. end beach at Molawa.
23	44'		" " wall of spit,
23	44'		" " Green shingles & sides spiral staircase
23	44'		Centre of island
23	43'		Rock slide at H.W.M. 1/2 mi. E. of above islet (0007)
23	43'		From steep cliff seen at right from Molawa.
23	43'		Point top steep jagged rock pile extreme end Cape Molawa.
23	43'		" " Many as (1000)
23	43'		" " S. side cave.
23	43'		" " Spots on large rock at cliff ledge.
23	43'		" " on round, balanced stone
23	43'		Sharp top of islet Chupapa (see chart 416)
23	43'		Highest of smooth low rock 300 m. E. of Tit (cave)
23	43'		Point III N. side cave.
23	43'		" " on overhanging Mt. when wind turns inland.
23	43'		" " many spots on round Mt. N. of Homolima 100.
23	43'		New house at
23	43'		Point on slender pinnacle S. side
23	43'		House N. side bay of Homolima.
23	43'		Point on third of point " (S. side)
23	43'		Church, with 3 windows, spire and cross.
23	43'		Point of ruins of mill
23	43'		" " on rock
23	43'		Church, crenel, behind school at W. side.
23	43'		Point at corner of swampy point
23	43'		Most E. of two red houses on beach at Molawa.
23	43'		Spire, unpainted, very old, in side of point.
23	43'		House, painted, very old, in side of point, lattice railing around top
23	43'		See end long white house
23	43'		Point on small side of fishpond wall E. of Europ. wharf
23	43'		Grave on slope, fence around
23	43'		Older end wharf, sheet of P. 100. (orient on same as in sketch)
23	43'		House in field, red roof " (W. side white)
23	43'		Point on side of fishpond wall
23	43'		Church, small white, spire and cross.
23	43'		Church, great stone, double steeple, slate, with trim. hexagon spire.
23	43'		Point on large fence post 1 1/2 m. E.
23	43'		" " Great circle on stack on fishpond wall.
23	43'		" " on pile stones
23	43'		" " shed on sand island E. of Molawa.
23	43'		" " wall and in palm trees of point
23	43'		Church, inside, octagonal spire, cross of Molawa.
23	43'		Warehouse on shore, end of Molawa.
23	43'		Shed on east of
23	43'		" " Point on map, shed
23	43'		Short wharf, in McConnaughey's ya.
23	43'		Long bay W. of
23	43'		Point on fruits on slope above trees, below st. P. 100.
23	43'		(see sheet B) Point on cairn on fishpond wall
23	43'		" " Highest point Pau Mill (see)
23	43'		Point at point 1/2 mi. S. of Cape Molawa



sta. Kaapahu, from Kamalo.



Topographic sheet
showing E. end of Mol-
okai Island. T.H.

Band, 1915.

T-3531

RECOVERY NOTES - TOPOGRAPHIC STATIONS

Car	Recovered. Found paint on wall. Large Keawi tree cuts view from ocean and signal placed 16 m. from Car toward sea along fishpond wall. <i>o New</i>
Dub	Cairn found, but no paint on it. It was whitewashed.
Jit	Shack not here. Cairn of rocks built at west end of wall and whitewashed. Cairn is just east of drain opening in wall.
Ware	Now gone.
Tag	Observed from road, but not seen from sea.
Sir	Shack found to have been moved. Signal placed in old location consisting of 6 round pieces of driftwood on end in cairn of rocks with whitewashed boards nailed to it to form banner.
Fag	Round post about 1' or 1'3" in diameter found and whitewashed. There is a similar large post to west but none was seen to east. Post leans toward shore and is quite secure in ground. Fence now runs about 1 m. inshore.
Go	Now Trg. Sta. Kaluaaha Church.
Red	Not recovered.
Wharf	Now in ruins.
Box	<i>Recovery doubtful. see Box on sheet 4112</i> Shed wall gone. Now Small green house in vicinity. Trg. Sta. Kupuke is a few m. south of house.
Dad	Not visited.
Long.	Not recovered. House not here anymore.
Pan	This house not here anymore.
Old	Church still here.
New	Palm trees obscure view from sea. Houses in this location.
Wet	Cairn rebuilt and whitewashed. 12" plank placed horizontal thru cairn and whitewashed.
La or Lu	Not here now. New church across road, <i>called Lu on Hydro Sheet 23 cut in by sextants.</i>
Vat	Recovered and whitewashed.
Ru	" " " -- large square whitewash.
Co.	" " "

SHEET 351¹ CONTINUED

RECOVERY NOTES - TOPOGRAPHIC STATIONS

Got	Recovered and whitewashed.
Ho	Recovered - new house east of Ho. <i>now</i> .
Hon	Recovered as desc. No Paint found, but tip of pinnacle was white-washed.
Ma	Recovered as described.
Win	Recovered, whole of rock whitewashed.
Pun	Recovered -- large whitewash <i>placed here</i>
Pug	" " " " "
Rat	Not visited. Seen from sea and from beach.
Pig	Not visited. Seen from sea.
Kim	Recovered. Whitewashed.
Jig	" "
Zone	" "
End	" "
POT	Cairn found intact. Whitewashed.
MIC	Vanes of windmill are gone. Scaffold still standing and there is an antenna mast extending up from the center of the scaffold. This mast looks like a flagpole from the sea.
Barn	Now in ruins.

C.J.W.

U. S. C. & G. S. S. PIONEER, O. W. SWAINSON, Chief of Party,

1930-1931