

12811

12811

<p>Form 504</p> <p>U. S. DEPARTMENT OF COMMERCE</p> <p>COAST AND GEODETIC SURVEY</p> <p><b>DESCRIPTIVE REPORT</b></p>	
<p>Type of Survey <u>SHORELINE (Photogrammetric)</u></p>	
<p>Field No. _____</p>	<p>Office No. <u>T-12811</u></p>
<p><b>LOCALITY</b></p>	
<p>State <u>SOUTH CAROLINA - GEORGIA</u></p>	
<p>General locality <u>CHARLESTON, S. C. TO SAVANNAH, GA.</u></p>	
<p>Locality <u>SAVANNAH BEACH</u></p>	
<p><u>1964-65</u></p>	
<p><b>CHIEF OF PARTY</b></p> <p>Joseph K. Wilson, Chief, Photo Party 6420</p> <p>Allen L. Powell, Director, A. M. C.</p>	
<p><b>LIBRARY &amp; ARCHIVES</b></p>	
<p>DATE _____</p>	

DESCRIPTIVE REPORT - DATA RECORD

T -12811

PROJECT NO. (II):  
Job PH-6407

FIELD OFFICE (III):  
Beaufort, South Carolina

CHIEF OF PARTY  
Joseph K. Wilson

PHOTOGRAMMETRIC OFFICE (III):  
Atlantic Marine Center

OFFICER-IN-CHARGE  
Allen L. Powell  
Director

INSTRUCTIONS DATED (II) (III):  
April 23, 1964  
September 28, 1964  
December 22, 1964  
February 17, 1971

METHOD OF COMPILATION (III):  
Kelsh

MANUSCRIPT SCALE (III):  
1:10,000

STEREOSCOPIC PLOTTING INSTRUMENT SCALE (III):  
6,000  
1:30,000 Pantographed to 1:10,000

DATE RECEIVED IN WASHINGTON OFFICE (IV):

DATE REPORTED TO NAUTICAL CHART BRANCH (IV):

APPLIED TO CHART NO.

DATE:

DATE REGISTERED (IV):

GEOGRAPHIC DATUM (III):  
N.A. 1927

VERTICAL DATUM (III): MHW  
MEAN SEA LEVEL EXCEPT AS FOLLOWS:  
Elevations shown as (25) refer to mean high water  
Elevations shown as (5) refer to sounding datum  
i.e., mean low water or mean lower low water

REFERENCE STATION (III):  
WEST BASE (USE) 1932 ✓

LAT.:  
32° 01' 08.568" (263.9) ✓

LONG.:  
80° 51' 50.032" (1313.0) ✓

ADJUSTED  
 UNADJUSTED

PLANE COORDINATES (IV):  
67,594.27 ft. ✓      x =      2,042,189.36 ft. ✓

STATE  
South Carolina

ZONE  
South

ROMAN NUMERALS INDICATE WHETHER THE ITEM IS TO BE ENTERED BY (II) FIELD PARTY, (III) PHOTOGRAMMETRIC OFFICE, OR (IV) WASHINGTON OFFICE.  
WHEN ENTERING NAMES OF PERSONNEL ON THIS RECORD GIVE THE SURNAME AND INITIALS, NOT INITIALS ONLY.

DESCRIPTIVE REPORT - DATA RECORD

FIELD INSPECTION BY (II):  Jim D. Shea		DATE:  May-June 1964
MEAN HIGH WATER LOCATION (III) (STATE DATE AND METHOD OF LOCATION):  Air Photo Compilation Date of photography: March 13, 1964		
PROJECTION AND GRIDS RULED BY (IV): A. E. Roundtree		DATE 1-15-65
PROJECTION AND GRIDS CHECKED BY (IV): P. Hopkins		DATE 1-15-65
CONTROL PLOTTED BY (III):  A. Santillan		DATE  Jan. 1965
CONTROL CHECKED BY (III): H. Cordell		DATE Jan., 1965
RADIAL PLOT OR STEREOSCOPIC CONTROL EXTENSION BY (III): L. Fritz (WSC) J. T. Gerlach (WSC)		DATE
STEREOSCOPIC INSTRUMENT COMPILATION (III):	PLANIMETRY L. Neterer	DATE July 1965
	CONTOURS Inapplicable	DATE
MANUSCRIPT DELINEATED BY (III): L. Neterer		DATE July, 1965
SCRIBING BY (III):		DATE
PHOTOGRAMMETRIC OFFICE REVIEW BY (III): R. J. Pate		DATE April 1966
REMARKS:		

DESCRIPTIVE REPORT - DATA RECORD

CAMERA (KIND OR SOURCE) (III):

"W" Camera

PHOTOGRAPHS (III)

NUMBER	DATE	TIME	SCALE	STAGE OF TIDE
64 W 4334	13 March 1964	1021	1:30,000	3.6
4335	"	1022	"	3.6
4336	"	1022	"	3.6
4337	"	1023	"	3.6
64 W 4324 & 4325	"	1009	"	4.0

TIDE (III) Predicted

		RATIO OF RANGES	MEAN RANGE	SPRING RANGE
REFERENCE STATION:	Savannah River Entrance		6.9	8.1
COORDINATE STATION:				
SUBORDINATE STATION:				
Atlantic Marine Center <del>WASHINGTON OFFICE</del> REVIEW BY (IV): C. H. Bishop		DATE: 07-15-71		
PROOF EDIT BY (IV):		DATE:		
NUMBER OF TRIANGULATION STATIONS SEARCHED FOR (II):	RECOVERED: 11	IDENTIFIED: 4		
NUMBER OF BM(S) SEARCHED FOR (II):	RECOVERED: 1	IDENTIFIED:		
NUMBER OF RECOVERABLE PHOTO STATIONS ESTABLISHED (III):		None		
NUMBER OF TEMPORARY PHOTO HYDRO STATIONS ESTABLISHED (III):		None		

REMARKS:

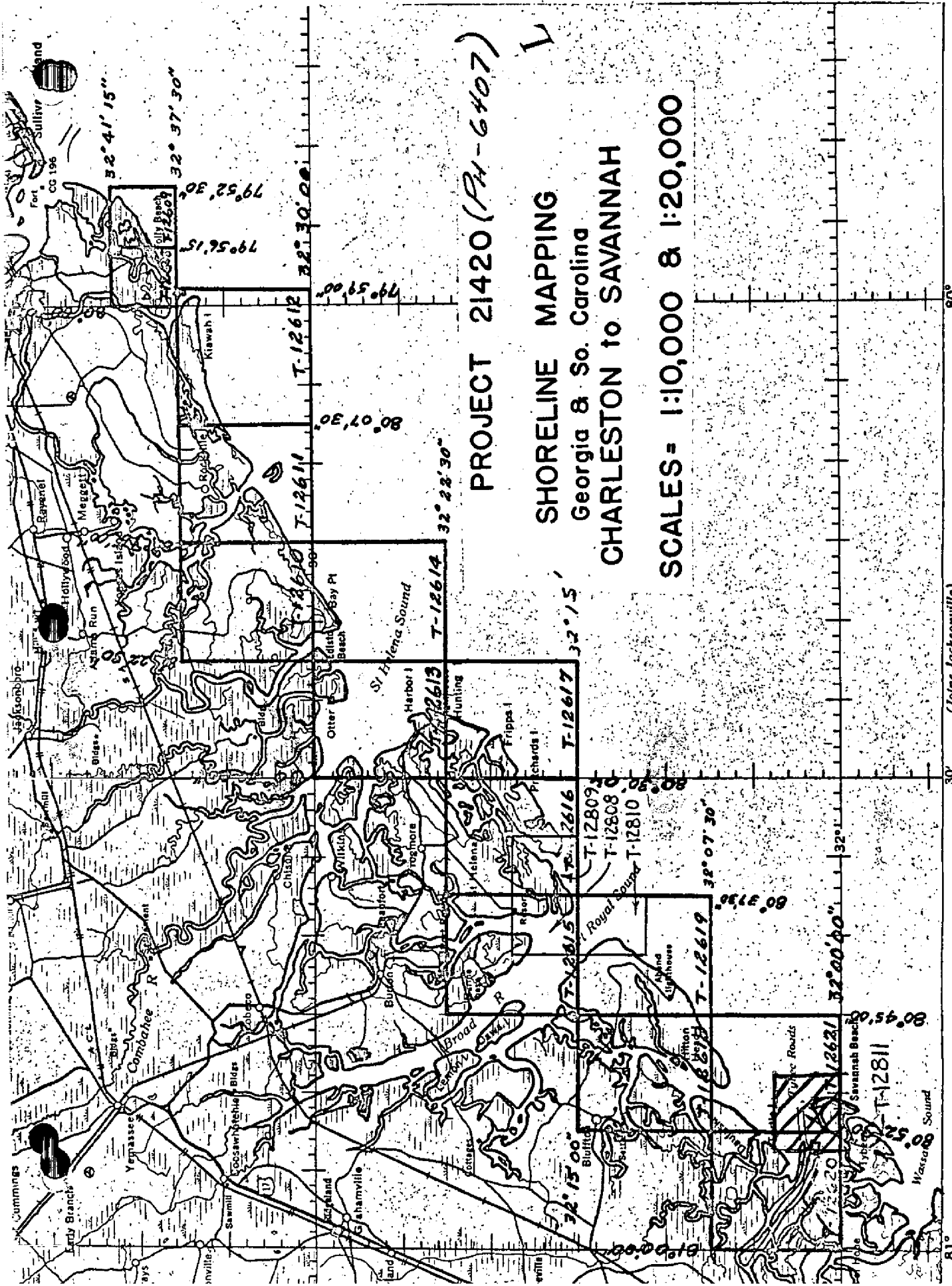
T-12811

COMPILATION RECORD

COMPLETION DATE

REMARKS

COMPILATION RECORD	COMPLETION DATE	REMARKS
Compilation complete pending field edit	July 1965	
Field edit	July 1971	



(Joins Jacksonville)

81°

30°

80°

8

SUMMARY TO ACCOMPANY  
DESCRIPTIVE REPORT T-12811

This shoreline manuscript, scale 1:10,000, is one of 18 maps that comprise Project PH-6407, Charleston, South Carolina to Savannah, Georgia. The sketch on page 5 of this report shows the location of T-12811 in the project.

This is a stereo-instrument project. All of the photographs for T-12811 were 1:30,000 scale panchromatic, taken with the "W" camera on March 13, 1964. The stereo-bridge was run and adjusted to field identified control at the Rockville Science Center. Compilation was done with the Kelsh Plotter at the Atlantic Marine Center. Ratio prints at 1:10,000 scale were processed for photo-hydro support, but hydrography was not accomplished as of July 1971.

Field work before compilation consisted of control identification and field inspection. This map was not field edited.

Final review was done at the Atlantic Marine Center in July 1971.

The compilation manuscript was a vinylite sheet 3 minutes 45 seconds in latitude by 4 minutes 45 seconds in longitude.

A cronaflex copy of the final reviewed manuscript and a negative have been forwarded for record and registry.

FIELD INSPECTION REPORT  
Project 21420 (Part 2)  
Maps T-12613 thru T-12621  
Georgia and South Carolina

This report is submitted for nine Shoreline Maps since there are no great differences in terrain, natural or cultural features which would require special treatment.

2. AREAL FIELD INSPECTION

The area lies between Savannah River and Northeastward to a point just South of Edisto Beach. It includes the outside shoreline and a part of Savannah River, Port Royal Sound and St. Helena Sound. The photograph coverage is not complete for each map, therefore, in accordance with instructions from Washington, field inspection has been completed to the limits of the photographs.

The portion bordering the Atlantic Ocean consists of high sand dunes along the ocean with marsh and swamp behind.

The town of Savannah is located just West of the most Southern maps whereas the town of Beaufort is centrally located. Most of the land is owned by private interests and in many cases, special permission is required to enter the properties.

The photographs were taken in the spring of 1964. The photographic quality was good for the entire area. The tones were found to be similar to other areas along the South Atlantic Coast.

Photographs used for field inspection are listed below by individual maps:

<u>T-12613</u>	<u>T-12614</u>	<u>T-12615</u>	<u>T-12616</u>	<u>T-12617</u>	<u>T-12618</u>
64-W-4269 4270 64-S-1206	64-S-1202 1203	64-W-4298 thru 4302 4289 thru 4291 4307 thru 4311	64-W-4279 thru 4283	64-W-4271 thru 4273	64-W-4319 thru 4320
<u>T-12619</u>	<u>T-12620</u>	<u>T-12621</u>			
64-W-4315 thru 4286 thru	64-W-4318 4288	64-W-4324 thru 4329 thru	64-W-4327 4334	64-W-4321 thru 4335 thru	64-W-4323 4337

3. HORIZONTAL CONTROL

Horizontal Control recovery and identification has been completed in accordance with Project Instructions.

The identification of horizontal control was accomplished on enlarged sections of the photographs. This was the first time our party had used the enlarged sections for this purpose. In most cases there was no difficulty and it is believed that the substitute points selected enhanced the accuracy and quality of the points. However, there was difficulty at one station (VENUS 2). The station was pricked direct as there was a small steel stand



over the mark. The substitute point could only be seen good on two of the four photographs. This point has been marked doubtful.

Horizontal control stations reported "lost", "destroyed", or "not recovered" are listed below by map:

T-12613

ASH 1919  
 BEK (BEACON NO 1), 1934  
 BUTCHERS ISLAND 1857  
 CENTRAL 1913  
 COMBAHEE BANK LIGHT 1955  
 EGG 4, 1933  
 EGG BANK PASSAGE DAYBEACON ALL, 1955  
 EGG BANK PASSAGE DAYBEACON A9, 1955  
 EGG BANK PASSAGE DAYBEACON A7, 1955  
 EGG BANK PASSAGE DAYBEACON A5, 1955  
 EGG BANK PASSAGE DAYBEACON A4, 1955  
 GREEN BEACON 1933  
 GUS (BEACON NO 2) 1934  
 HARBOR RIVER DAYBEACON A14, 1955  
 HUTCHINSON 2, 1933  
 PALMETTO 1933  
 PELICAN BANK DAYBEACON A2, 1955  
 PELICAN BANK DAYBEACON A1, 1955  
 RED BEACON 1933  
 SOUND 1933  
 WHARF 1933

T-12614

ED 1921

T-12615

ARCH 1921  
 ARCHE CREEK BEACON 1933  
 BASE 1 (USE) 1931  
 BEAUFORT RIVER LIGHT 17, 1955  
 BEAUFORT RIVER LIGHT 13A, 1955  
 BUG 1933  
 BROOKLYN 1859  
 CHOW 1933  
 FORT FREMONT OBSERVATION TOWER 1931  
 DOS 1931  
 FORT FREMONT BEACON 1931  
 NORTH 1931  
 PARRIS ISLAND WATER TANK (WHITE WITH BLACK TOP) 1932  
 PARRIS ISLAND, LOW WHITE STACK 1932  
 PARRIS ISLAND SILVER WATER TANK 1932  
 PARRIS ISLAND MARINE CORPS RECRUIT DEPOT AIR STRIP BEACON 1955  
 PARRIS ISLAND HIGH BRICK STACK 1932  
 PARRIS ISLAND STACK (HIGHEST OF TWINS) 1932

PARRIS ISLAND MARINE CORPS, RECRUIT DEPOT, AIR CONTROL TOWER 1955  
 PARRIS (USE) 1931  
 PORT ROYAL SOUND LIGHT NO 1, 1955  
 SKULL CREEK DAYBEACON 4, 1955  
 SKULL CREEK ENTRANCE LIGHT 3, 1955  
 SKULL CREEK DAYBEACON 5, 1955  
 SPIT 1933  
 TRIANGULAR BEACON 1931

T-12616

BULL 1933  
 MID 1931  
 TIDE 1933

T-12617

STORY RIVER DAYBEACON A16, 1955  
 TEMPORARY 1955

T-12618

BACK 1931  
 BULLPOINT FRONT RANGE 1931  
 BUCK 2, 1931  
 FRON 1931  
 MAG 1931  
 MARSH 2, 1931  
 MARTIN 1933  
 NO 9 (USE) 1931  
 OCHO 1921  
 SIETE 1931  
 SOUTH 1931  
 UIMER 1933

T-12619

HILTON FRONT 1931  
 STONEY PLANTATION, BAPTIST CHURCH 1931  
 TON 1931  
 TON 2, 1955  
 WAL 3, 1955

T-12620

BARNWELL PLACE LIGHT (OGLETHORPE REAR RANGE LIGHT) 1913  
 BLOODY 1932  
 BUSH (USE) 1932  
 ELBA ISLAND FLATS, LIGHT NO 11, 1932  
 FIELDS CUT NO 1 (USE) 1932  
 LOWER FLATS REAR RANGE LIGHT 1932  
 LAZAGETTO CREEK HIGHWAY BRIDGE CENTER OF SWING SPAN 1932  
 LONG ISLAND CROSSING FRONT RANGE LIGHT 1933

LONG ISLAND CROSSING REAR RANGE LIGHT 1933  
 NEW CHANNEL REAR RANGE LIGHT 1932  
 NORTH CORNER OF OLD TOWER 1932  
 PERRY (USE) 1934  
 PALMETTO 1933  
 QUARANTINE TANK FINIAL 1932  
 QUARANTINE (USE) 1932  
 TOPO 1934  
 TYBEE KNOLL CUT FRONT RANGE LIGHT 1932  
 UPPER FLATS FRONT RANGE TARGET 1932  
 UPPER FLATS REAR RANGE LIGHT 1932  
 WALLS CUT BEACON NO 6, 1932  
 WALLS CUT BEACON NO 8, 1932  
 WILMINGTON 1857  
 WILMINGTON ISLAND BLACK VENTILATOR, OGIETHORPE HOTEL 1933  
 WRIGHT 1932

T-12621

BRAD 1931  
 DO 1916  
 FORT SCREVEN WATER TANK 1932  
 SAVANNAH BEACH, CASINO SOUTH COPOLA 1913  
 SAVANNAH BEACH, CASINO NORTH COPOLA, 1913  
 TYBRISA TANK 1932

4. VERTICAL CONTROL

A search was made for all tidal bench marks within the limits of these maps. Form 685A was submitted for each mark. One mark in each group was identified on the photograph, except in a few cases where there was no coverage.

5. CONTOURS AND DRAINAGE

Contours are inapplicable.

Drainage is almost entirely composed of tidal streams. Normal drainage is generally by direct run-off into marsh, swamp or the tidal streams.

6. WOODLAND COVER

Woodland Cover was classified in accordance with the Topographic Manual.

7. SHORELINE AND ALONGSHORE FEATURES

The high-water line has been indicated on the photographs by symbol in accordance with current instructions. No attempt was made to delineate the low-water line.

The field inspector accomplished this phase by several methods; Measurements from identifiable points of detail, by visual inspection from skiff, and by walking the shoreline.

All other shoreline features are adequately covered by field inspection notes on the photographs. The photography is recent, therefore, there have been no great changes.

#### 8. OFFSHORE FEATURES

Several piling etc. were located either by sextant fix or theodolite cuts during this survey.

The obstruction reported at Lat. 32-01 - Long. 80-50 chart 1240, could not be seen at low-water.

Your attention is invited to the restricted area in Broad River, near Archers Creek. It is believed that the restricted area should be enlarged on the charts since most of this portion of the river is under fire by the marine guns.

#### 9. LANDMARKS AND AIDS

All Nautical Landmarks have been investigated in the field and are reported on form 567.

All fixed Aids to Navigation were investigated and are reported on form 567. Third-order positions were obtained for the following:

TYBEE KNOLL CUT RANGE REAR LIGHT, 1964  
TYBEE RANGE FRONT LIGHT, 1964  
JONES ISLAND RANGE FRONT LIGHT, 1964  
PORT ROYAL ENTRANCE, CHANNEL FRONT RANGE LIGHT, 1964

Four private aids in the Calibogue Sound area are recommended for charting. The aids were located by several methods; Cuts from triangulation stations and photo points, by sextant fixes, or identified directly on the photograph.

#### 10. BOUNDARIES, MONUMENTS AND LINES

There have been no boundary lines shown.

#### 11. OTHER CONTROL

There were no topographic stations established.

#### 12. OTHER INTERIOR FEATURES

All roads were classified in accordance with Photogrammetry Instructions number 56.

Field Inspection of buildings was done in accordance with Photogrammetry Instructions Number 54, revised September 22, 1961.

There were no bridge or cable clearances measured during this survey.

Marsh and Swamp limits have been shown on the photographs where coverage was available.

13. GEOGRAPHIC NAMES

The investigation of Geographic Names will be handled slightly different from that called for in Project Instructions. This change in procedure was recommended by Dr. A. J. Wraight, Chief, Geographic Names Branch.

A systematic and complete investigation of Geographic Names was made from Savannah River North and East to Latitude 32-15. The remainder of the project will be investigated for discrepancies and New Names only.

The change in procedure is due to the recent investigation of names in the project during the years 1955, 1956 and 1957.

The Geographic Names Reports will be submitted at a later date.

14. SPECIAL REPORTS AND SUPPLEMENTAL DATA

Transmitting letters for Horizontal Control Identification were mailed to Washington separately for Part 1 and Part 2 of the Project. Part 1 was mailed on 10 July 1964 and Part 2 on 7 July 1964.

Form 567 will be forwarded with this report.

17 July 1964

Submitted by:

*Joseph K. Wilson*

Joseph K. Wilson

Chief, Photo Party 6420

November 1964

Aerotriangulation Report

Project No. 21420

Charleston, South Carolina to Savannah, Georgia

21. Area Covered

The bridging covers the Atlantic Coast Shoreline of an area between Charleston, South Carolina to Savannah, Georgia.

22. Method

Nine strips were bridged on the Zeiss C-5 and C-9 stereo-planigraphs to provide control for compilation of shoreline.

Strip No.	Photos
1	64S 1206 - 1227
3	64W 4269 - 4273
4	64W 4276 - 4284
5	64W 4306 - 4312
6	64W 4296 - 4302
7	64W 4290 - 4294
8	64W 4314 - 4327
9	64W 4332 - 4337
10	64W 4286 - 4290

Strip #2 consisting of photos 64S 1184 - 1203 was not bridged. However, tie points were dropped from Strip #1 to provide control for graphic compilation of the area.

All strips were 1:30,000 scale photography.

23. Adequacy of Control

Control positions were adequate for bridge adjustment. However, the northeast end of Strip #1 was run as a separate bridge due to difficulty in holding the control. Both segments had control station Hernan in common. Tie points between the two bridges were averaged.

Strip #7 was also interrupted due to a water gap and divided into two bridges, #7 and #10.

Strip #9 was ended at control station Queen because Station Erector (230) would not hold. This was probably due to error in alignment.

*The points had been drilled on the plates for strips #2 by the W.C., and the maps were compiled with Kellogg.*

All other points held within accuracy requirements.

All common pass points between the strips were averaged.

24. Supplemental Data

A number of objects identified as landmarks were used as check control stations and held within accuracy requirements.

25. Photography

Photography was adequate as to coverage, overlap and definition.

26. Recommendations

Ratio prints of Strip #2, at a scale of 1:20,000, have been ordered and will be submitted separately.

Submitted by:

ATG  
LF

Lawrence Fritz  
John T. Gerlach

Approved by:

*John D. Perrow, Jr.*  
John D. Perrow, Jr.

Aerotriangulation Report  
Project No. 21420  
Charleston, S.C. to Savannah, Ga.

Amendment to Report of Nov. 1964

Strip 9-A, consisting of photos 64-W-4329 through 4332, was bridged using three triangulation stations as control. Station Proctor Use, 1932 (SS #1) was of very poor image quality and could not be held in the bridge. A secondary straight line adjustment was applied to the junction area of Strips 8 and 9. This junction is weak but within National Map Accuracy Standards.

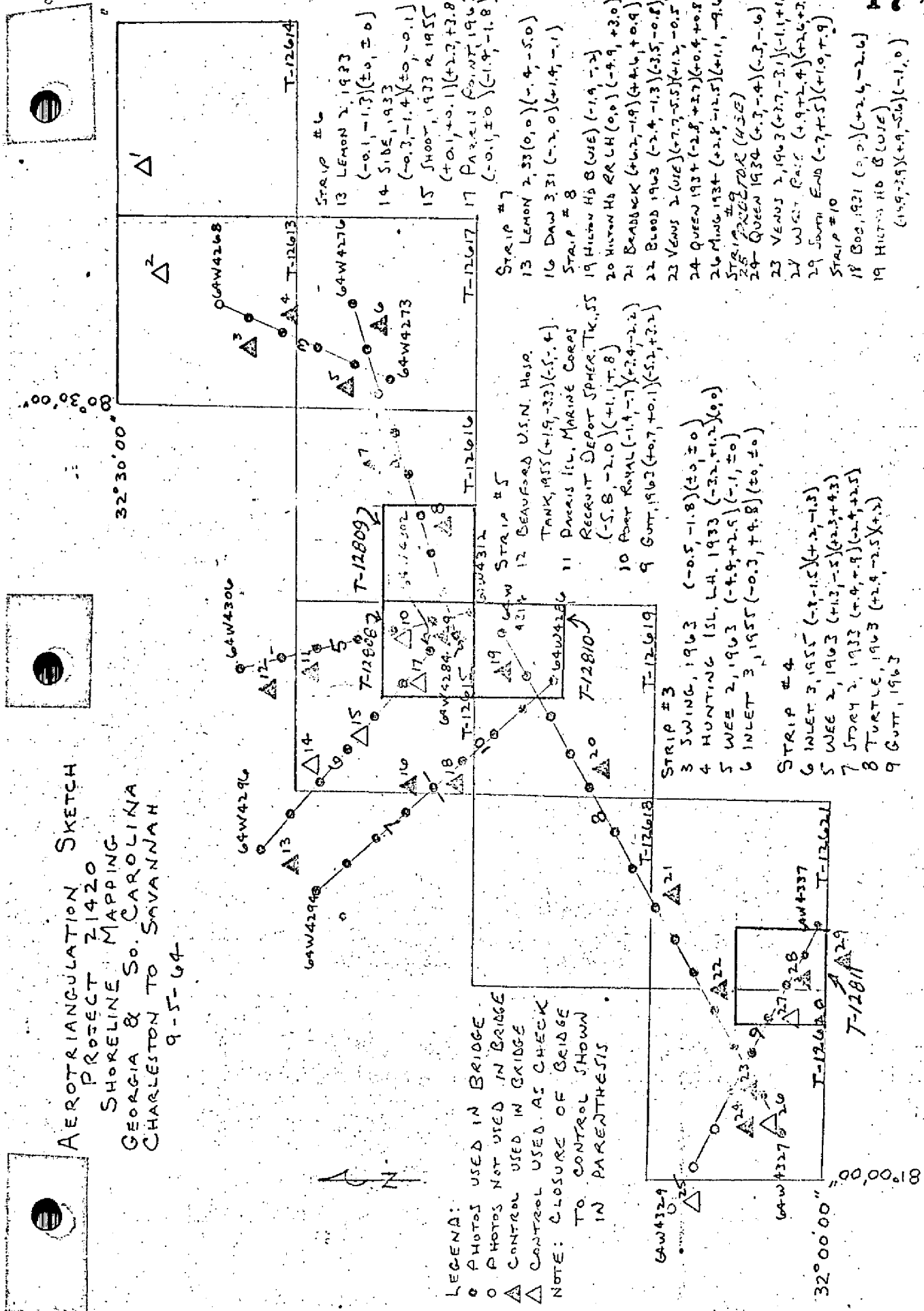
Submitted by:

John D. Perrow, Jr.





**AEROTRIANGULATION SKETCH**  
**PROJECT Z1420**  
**SHORELINE MAPPING**  
**GEORGIA & SO. CAROLINA**  
**CHARLESTON TO SAVANNAH**  
**9-5-64**



**LEGENDA:**  
 ○ PHOTOS USED IN BRIDGE  
 ○ PHOTOS NOT USED IN BRIDGE  
 △ CONTROL USED IN BRIDGE  
 △ CONTROL USED AS CHECK  
**NOTE:** CLOSURE OF BRIDGE TO CONTROL SHOWN IN PARENTHESIS

- STRIP # 3**  
 3 SWING, 1963 (-0.5, -1.8) (+0, ±0)  
 4 HUNTING ISL. L.H. 1933 (-2.2, +1.2) (0, 0)  
 5 WEE 2, 1963 (-4.9, +2.5) (-1, ±0)  
 6 INLET 3, 1955 (-0.3, +4.8) (+0, ±0)
- STRIP # 4**  
 6 INLET 3, 1955 (-4.1, -1.5) (+2, -1.3)  
 5 WEE 2, 1963 (+1.3, -1.5) (+2.5, +4.3)  
 7 STONEY 2, 1933 (+4.4, -1.9) (-2.4, +2.5)  
 8 TURTLE, 1963 (+2.4, -2.5) (+.3)
- STRIP # 5**  
 9 GUTT, 1963 (+0.7, +0.1) (-5.2, +3.2)
- STRIP # 6**  
 13 LEMON 2, 1933 (0, 0) (-1.4, -5.0)  
 16 DAW 3, 31 (-2.2, 0) (-1.4, -1.1)
- STRIP # 8**  
 19 HIGHWAY H3 B (WIS) (-1.4, -2)  
 20 HIGHWAY H3 R L H (0, 0) (-4.9, +3.0)  
 21 BARNBROOK (+6.2, -1.9) (+4.6, +0.9)  
 22 BROAD 1963 (-2.4, -1.3) (-3.5, -0.8)  
 23 VENUS 2 (WIS) (-7.7, -5.5) (+1.2, -0.5)  
 24 QUEEN 1934 (-2.8, +3.7) (-0.4, +0.8)  
 26 MING 1934 (+2.8, -2.5) (+1.1, -4.6)  
 28 1934 (WIS) (WIS)  
 24 QUEEN 1934 (-6.3, -4) (-3, -6)  
 23 VENUS 2, 1963 (-2.7, -2.1) (-1.1, +1.2)  
 23 WISSETT PASS (-4.9, +2.4) (+2.6, +2.5)  
 29 SOUTH END (-7.4, +5) (+1.9, +1.9)
- STRIP # 10**  
 18 BOO, 1931 (0, 0) (+2.6, -2.6)  
 19 HIGHWAY H3 B (WIS) (1.9, -2.9) (+4.9, -5.6) (-1, 0)
- STRIP # 12**  
 12 BEAUFORT U.S.N. HOSE TANK, 1955 (+1.9, -3.3) (-5, +4)  
 11 PARRIS ISL. MARINE CORPS RECRUIT DEPOT SPHER. TRUSS (-5.8, -2.0) (+1.1, +1.8)  
 10 PORT ROYAL (-1.4, -1.7) (-2.4, -2.2)  
 9 GUTT, 1963 (+0.7, +0.1) (-5.2, +3.2)
- STRIP # 16**  
 16 LEMON 2, 1933 (0, 0) (-1.4, -5.0)  
 16 DAW 3, 31 (-2.2, 0) (-1.4, -1.1)
- STRIP # 17**  
 17 LEMON 2, 1933 (0, 0) (-1.4, -5.0)  
 14 SIBS, 1933 (-0.1, -1.3) (+0, ±0)  
 15 SHOOT, 1933 R 1955 (+0.1, +0.1) (+2.2, +3.8)  
 17 PARRIS ISL. MARINE CORPS RECRUIT DEPOT SPHER. TRUSS (-5.8, -2.0) (+1.1, +1.8)



Photogrammetry



MAP T. 12811

PROJECT NO. 21420 (PH-6407)

SCALE OF MAP 1:10,000

SCALE FACTOR

STATION	SOURCE OF INFORMATION (INDEX)	DATUM	LATITUDE OR $y$ -COORDINATE LONGITUDE OR $x$ -COORDINATE	DISTANCE FROM GRID IN FEET. OR PROJECTION LINE IN METERS		DATUM CORRECTION	N.A. 1927 - DATUM		FACTOR DISTANCE FROM GRID OR PROJECTION LINE IN METERS
				FORWARD	(BACK)		FORWARD	(BACK)	
COCKSPUR LIGHT- HOUSE 1902	PCs -S P-46		68,835.93	✓					
			2,037,144.54	✓					
FORT PULASKI FLAGPOLE 1964	CONTROL FOR BRIDGING DATA		70,423.72	✓					
			2,033,827.30	✓					
JONES ISLAND RANGE REAR LIGHT 1964	PHOTOSTAT #18		32° 02' 39.673"	✓					
			80 51 40.688	✓					
QUARANTINE (USE) 1932	GPs P.39 PCs p.19 Desc 203 p.11		75.013.12	✓					
			2,032,572.99	✓					
FORT PULASKI 1963	PHOTOSTATS #13		32° 01' 38.953"	✓					
			80 53 27.518	✓					
WEST BASE (USE) 1932	PC p.19 GP p.39		67,594.27	✓					
			2,042,189.36	✓					
BLOODY POINT RANGE FRONT LIGHT 1964	PHOTOSTAT		32° 02' 30.546"	✓					
			80 49 40.467	✓					
BLOODY POINT RANGE REAR LIGHT 1964	"		32 03 17.597	✓					
			80 50 23.085	✓					
TYBEE LIGHTHOUSE 1932	PC p.19 GP p.40		68,686.68	✓					
			2,047,788.72	✓					
JONES ISLAND RANGE FRONT LIGHT 1964	FIELD FORM 709		75,933.25	✓					
			2,045,571.36	✓					
SAVANNAH BEACH, MUNICIPAL WATERTANK 1964	"		32° 00' 39.720"	✓					
			80 50 31.628	✓					
									10

1 FT. = 3048006 METER  
COMPUTED BY: BLB

DATE 2-3-65

CHECKED BY: BHB

DATE 2-3-65

M. 2388-12

## COMPILATION REPORT

T-12811

31. DELINEATION

The Wild B-8 was used. Field inspection was adequate. Photography was satisfactory.

32. CONTROL

See Aerotriangulation Report dated November 1964.

33. SUPPLEMENTAL DATA

None

34. CONTOURS AND DRAINAGE

Inapplicable

35. SHORELINE AND ALONGSHORE DETAILS

The shoreline inspection was adequate and was delineated accordingly.

36. OFFSHORE DETAILS

None

37. LANDMARKS AND AIDS

Form 567 for Landmarks and Aids have been submitted under date April 28, 1966.

38. CONTROL FOR FUTURE SURVEYS

None

39. JUNCTIONS

Junctions have been made with T-12620, scale 1:20,000, to the west and T-12621, scale 1:20,000 to the north and east. There is no contemporary survey to the south.

40. HORIZONTAL AND VERTICAL ACCURACY

No statement

46. COMPARISON WITH EXISTING MAPS

Comparison has been made with U.S.G.S. Quadrangle FORT PULASKI, S. C. - GA., scale 1:24,000, dated 1955, and A.M.S. Quadrangle SAVANNAH BEACH NORTH, GA. - S. C., scale 1:25,000, dated 1955.

47. COMPARISON WITH NAUTICAL CHARTS

Comparison has been made with Chart 1240, scale 1:80,000, 6th edition, dated April 20, 1964; Chart 1241, scale 1:80,000, dated November 27, 1961; and Chart 440, scale 1:40,000, 30th edition, Dated December 7, 1964.

ITEMS TO BE APPLIED TO NAUTICAL CHARTS IMMEDIATELY

None

ITEMS TO BE CARRIED FORWARD

None


Submitted:

*R. J. Pate*R. J. Pate  
Cartographic Tech.

Approved:

*Allen L. Powell*Allen L. Powell, RADM, NOAA  
Director, Atlantic Marine Center





T-12811

49. NOTES FOR THE HYDROGRAPHER

None.



C&GS FORM 1002 (11-13-61)		U.S. DEPARTMENT OF COMMERCE COAST AND GEODETIC SURVEY	
PHOTOGRAMMETRIC OFFICE REVIEW			
T-10363		T-12811	
1. PROJECTION AND GRIDS RJP	2. TITLE RJP	3. MANUSCRIPT NUMBERS RJP	4. MANUSCRIPT SIZE RJP
CONTROL STATIONS			
5. HORIZONTAL CONTROL STATIONS OF THIRD-ORDER OR HIGHER ACCURACY RJP	6. RECOVERABLE HORIZONTAL STATIONS OF LESS THAN THIRD-ORDER ACCURACY (Topographic stations)XX		7. PHOTO HYDRO STATIONS XX
8. BENCH MARKS XX	9. PLOTTING OF SEXTANT FIXES XX	10. PHOTOGRAMMETRIC PLOT REPORT BRIDGE (WO)	11. DETAIL POINTS KELSH
ALONGSHORE AREAS (Nautical Chart Data)			
12. SHORELINE RJP	13. LOW-WATER LINE RJP	14. ROCKS, SHOALS, ETC. RJP	15. BRIDGES XX
16. AIDS TO NAVIGATION RJP	17. LANDMARKS RJP	18. OTHER ALONGSHORE PHYSICAL FEATURES RJP	19. OTHER ALONGSHORE CULTURAL FEATURES RJP
PHYSICAL FEATURES			
20. WATER FEATURES RJP		21. NATURAL GROUND COVER RJP	22. PLANETABLE CONTOURS XX
23. STEREOSCOPIC INSTRUMENT CONTOURS XX	24. CONTOURS IN GENERAL XX	25. SPOT ELEVATIONS XX	26. OTHER PHYSICAL FEATURES RJP
CULTURAL FEATURES			
27. ROADS RJP	28. BUILDINGS RJP	29. RAILROADS XX	30. OTHER CULTURAL FEATURES XX
BOUNDARIES			
31. BOUNDARY LINES XX		32. PUBLIC LAND LINES XX	
MISCELLANEOUS			
33. GEOGRAPHIC NAMES RJP		34. JUNCTIONS RJP	35. LEGIBILITY OF THE MANUSCRIPT RJP
36. DISCREPANCY OVERLAY XX	37. DESCRIPTIVE REPORT RJP	38. FIELD INSPECTION PHOTOGRAPHS RJP	39. FORMS RJP
40. REVIEWER RJP		SUPERVISOR, REVIEW SECTION OR UNIT ACR	
41. REMARKS (See attached sheet)			
FIELD COMPLETION ADDITIONS AND CORRECTIONS TO THE MANUSCRIPT			
42. Additions and corrections furnished by the field completion survey have been applied to the manuscript. The manuscript is now complete except as noted under item 43.			
COMPILER		SUPERVISOR	
43. REMARKS			



NONFLOATING AIDS OR LANDMARKS FOR CHARTS

TO BE CHARTED  
TO BE REVISED  
TO BE DELETED  
STRIKE OUT TWO

ATLANTIC MARINE CENTER  
Dec. 30 19 65

I recommend that the following objects which have *(have not)* been inspected from seaward to determine their value as landmarks be charted on *(deleted from)* the charts indicated.  
The positions given have been checked after listing by

C. Bishop

J. Bull, Director, AYC  
*Chief of Party*

STATE	SOUTH CAROLINA - GEORGIA	DESCRIPTION	SIGNAL NAME	POSITION		DATUM	METHOD OF LOCATION AND SURVEY NO.	DATE OF LOCATION verified	HARBOR CHART	INSHORE CHART	OFFSHORE CHART	CHARTS AFFECTED
				LATITUDE*	LONGITUDE*							
CHARTING NAME				° ' "	° ' "							
		SAVANNAH RIVER		32 00	80 48	MA 1927		6-5-64	X	X		440 1240
		TYBEE RANGE FRONT LIGHT 1964 L.L. No. 4547										
		TYBEE LIGHT (TYBEE LIGHTHOUSE 1932) L. L. No. 4324, 4548		32 01	80 50	"		6-1-64	X	X		440 1240
		BLOODY POINT RANGE FRONT LIGHT 1964 L.L. No. 4553		32 02	80 49	"		6-1-64	X	X		440 1240
		BLOODY POINT RANGE REAR LIGHT 1964 L.L. No. 4554		32 03	80 50	"		6-4-64	X	X		440 1240
		JONES ISLAND RANGE FRONT LIGHT 1964 L.L. No. 4559		32 02	80 51	"		6-5-64	X	X		440 1240
		JONES ISLAND RANGE REAR LIGHT 1964 L.L. No. 4560		32 02	80 51	"		6-4-64	X	X		440 1240

This form shall be prepared in accordance with Hydrographic Manual, Publication 20.2, Sec. 1-55, 2-39, 6-36, 7-18 to 22 inclusive, and Fig. 79. Positions of charted landmarks and nonfloating aids to navigation, if redetermined, shall be reported on this form. Revisions shall show both the old and new positions. The data should be considered for the charts of the area and not by individual field survey sheets. Information under each column heading should be given.

\* TABULATE SECONDS AND METERS

U.S. DEPARTMENT OF COMMERCE  
COAST AND GEODETIC SURVEY

NONFLOATING AIDS OR LANDMARKS FOR CHARTS

TO BE CHARTED  
TO BE REVISED  
TO BE DELETED

STRIKE OUT TWO

June 17 19 66

ATLANTIC MARINE CENTER

I recommend that the following objects which have ~~(been)~~ been inspected from seaward to determine their value as landmarks be charted on ~~(deleted from)~~ the charts indicated.

The positions given have been checked after listing by

B. Wilson

J. Bull, Director

Chart Out Book

CHARTING NAME	STATE	DESCRIPTION	SIGNAL NAME	LATITUDE*		LONGITUDE*		DATUM	METHOD OF LOCATION AND SURVEY No.	DATE OF LOCATION	HARBOR CHART	INSHORE CHART	OFFSHORE CHART	CHARTS AFFECTED
				° ' "	° ' "	° ' "	° ' "							
	GEORGIA - SOUTH CAROLINA													
LIGHT		SAVANNAH RIVER		32 01	56.33	80 54	26.37	NA 1927	TRI T-12620	6-5-64	X			440
LIGHT		(TYBEE KNOLL CUT RANGE REAR LIGHT 1964)		32 01	59.20	80 53	55.06	"	Photo T-12620	6-4-64	X			440
LIGHT		Tybee Knoll Cut Range Front Light		32 02	20.65	80 55	42.19	"	Photo T-12620	"	X			440
LIGHT		New Channel Range Front Light		32 02	63.6	80 56	11.07	"	"	"	X			440
LIGHT		New Channel Range Rear Light		32 04	15.10	80 57	18.64	"	"	6-3-64	X			440
LIGHT		Lower Flats Range Front Light		32 04	13.60	80 57	08.35	"	"	"	X			440
LIGHT		Lower Flats Range Rear Light		32 05	56.13	80 59	50.46	"	"	6-4-64	X			440
LIGHT		Oglethorpe Range Rear Light			1729		1323	"	"					
LIGHT		SAVANNAH RIVER TURN		32 05	31.30	80 59	25.09	"	"	"	X			440
LIGHT		Elba Island Training Wall		32 04	22.92	80 58	30.84	"	"	6-3-64	X			440
LIGHT		Elba Island Light 37		32 04	33.70	80 58	56.09	"	"	"	X			440
LIGHT		Elba Island Light 39			1038		1171	"	"	"				
LIGHT		SAVANNAH RIVER SOUTH CHANNEL		32 01	08.18	80 52	17.63	"	Photo T-12620	6-4-64	X			440
LIGHT		Lazaretto Creek Light 2			252		1250	"	Photo T-12811					1240

This form shall be prepared in accordance with Hydrographic Manual, Publication 20.2, Sec. 1-55, 2-39, 6-36, 7-18 to 22 inclusive, and Fig. 79. Positions of charted landmarks and nonfloating aids to navigation, if redetermined, shall be reported on this form. Revisions shall show both the old and new positions. The data should be considered for the charts of the area and not by individual field survey sheets. Information under each column heading should be given.

\* TABULATE SECONDS AND METERS

USCOMM-DC 10394-P61

T-12811

$$4 \overline{) 241.0} \\ \underline{964} \\ 1446$$

$$4 \overline{) 16.45} \\ \underline{658.0} \\ 1060$$

$$4 \overline{) 200.1} \quad 196.5$$

$$4 \overline{) 809.0} \quad 202.2$$

$$4 \overline{) 1038} \\ \underline{259.5}$$

$$4 \overline{) 1477.0} \\ \underline{367.8}$$

$$4 \overline{) 253} \\ \underline{63.2}$$

$$4 \overline{) 1250.0} \\ \underline{312.5}$$

$$4 \overline{) 161.1} \\ \underline{644.2}$$

$$4 \overline{) 318.9} \\ \underline{1275.5}$$

$$4 \overline{) 123.7} \\ \underline{494.6}$$

$$4 \overline{) 343.6} \\ \underline{1374.3}$$

$$4 \overline{) 261} \\ \underline{1044}$$

$$4 \overline{) 348} \\ \underline{1473}$$

T-12811

$$4 \overline{) 382.5} \begin{array}{r} 95.6 \\ \underline{382.5} \\ 0 \end{array}$$

$$4 \overline{) 452.9} \begin{array}{r} 113.2 \\ \underline{452.9} \\ 0 \end{array}$$

$$4 \overline{) 594.5} \begin{array}{r} 148.6 \\ \underline{594.5} \\ 0 \end{array}$$

$$4 \overline{) 1180.5} \begin{array}{r} 295.1 \\ \underline{1180.5} \\ 0 \end{array}$$

$$4 \overline{) 940.4} \begin{array}{r} 235.1 \\ \underline{940.4} \\ 0 \end{array}$$

$$4 \overline{) 1062.9} \begin{array}{r} 265.7 \\ \underline{1062.9} \\ 0 \end{array}$$

$$4 \overline{) 547.8} \begin{array}{r} 136.4 \\ \underline{547.8} \\ 0 \end{array}$$

$$4 \overline{) 606.9} \begin{array}{r} 151.7 \\ \underline{606.9} \\ 0 \end{array}$$

$$4 \overline{) 953.4} \begin{array}{r} 238.4 \\ \underline{953.4} \\ 0 \end{array}$$

$$4 \overline{) 280.6} \begin{array}{r} 70.1 \\ \underline{280.6} \\ 0 \end{array}$$

$$4 \overline{) 1221.8} \begin{array}{r} 305.4 \\ \underline{1221.8} \\ 0 \end{array}$$

$$4 \overline{) 1068.7} \begin{array}{r} 267.2 \\ \underline{1068.7} \\ 0 \end{array}$$

$$4 \overline{) 1733.0} \begin{array}{r} 433.8 \\ \underline{1733.0} \\ 0 \end{array}$$

$$4 \overline{) 692.0} \begin{array}{r} 173.0 \\ \underline{692.0} \\ 0 \end{array}$$

$$4 \overline{) 1823.0} \begin{array}{r} 455.8 \\ \underline{1823.0} \\ 0 \end{array}$$

$$4 \overline{) 1473.0} \begin{array}{r} 368.2 \\ \underline{1473.0} \\ 0 \end{array}$$

$$4 \overline{) 636.0} \begin{array}{r} 159.0 \\ \underline{636.0} \\ 0 \end{array}$$

$$4 \overline{) 1107.0} \begin{array}{r} 276.8 \\ \underline{1107.0} \\ 0 \end{array}$$

$$4 \overline{) 800.0} \begin{array}{r} 200.0 \\ \underline{800.0} \\ 0 \end{array}$$

$$4 \overline{) 488.0} \begin{array}{r} 122.0 \\ \underline{488.0} \\ 0 \end{array}$$

$$4 \overline{) 465.0} \begin{array}{r} 116.2 \\ \underline{465.0} \\ 0 \end{array}$$

$$4 \overline{) 489.0} \begin{array}{r} 122.2 \\ \underline{489.0} \\ 0 \end{array}$$

$$4 \overline{) 419.0} \begin{array}{r} 104.8 \\ \underline{419.0} \\ 0 \end{array}$$

$$4 \overline{) 219.0} \begin{array}{r} 54.8 \\ \underline{219.0} \\ 0 \end{array}$$

$$4 \overline{) 1729.0} \begin{array}{r} 432.2 \\ \underline{1729.0} \\ 0 \end{array}$$

$$4 \overline{) 1323.0} \begin{array}{r} 330.8 \\ \underline{1323.0} \\ 0 \end{array}$$





## REVIEW REPORT T-12811

## SHORELINE

July 15, 1971

61. GENERAL STATEMENT:

See Summary on page 6 of this Descriptive Report.

An ozalid comparison print, pages 30 through 36, with differences noted in Items 62 through 65, is bound with the original of this report.

62. COMPARISON WITH REGISTERED TOPOGRAPHIC SURVEYS:

A comparison was made with T-6154 b, scale 1:10,000, dated July-August 1934. This was a control survey and only short stretches of shoreline were mapped. Differences between the old survey and T-12811 are shown in blue on the comparison print.

The north tip of Tybee Island apparently has eroded about 400 meters.

T-12811 supersedes T-6154 b for charting purposes and will be superseded by TP-00277, Project PH-7101, when it is completed.

63. COMPARISON WITH MAPS OF OTHER AGENCIES:

A comparison was made with U.S.G.S. Quadrangle FORT PULASKI, S. C. - GA., scale 1:24,000, dated 1955, and with A.M.S. Sheet SAVANNAH BEACH NORTH, GA., S.C., scale 1:25,000, dated 1957. Differences between these maps and T-12811 are shown in brown on the comparison print.

The shoreline in Chimney Creek and Horse Pen Creek does not have the same alignment and there is noticeable difference in shoreline placement at the east end of Oyster Bed Island. There is no noticeable difference in shoreline on the east side of Tybee Island.

A wreck, not visible on the photographs, is shown at latitude  $32^{\circ}00.8'$ , longitude  $80^{\circ}49.6'$ .

64. COMPARISON WITH CONTEMPORARY HYDROGRAPHIC SURVEYS:

The most recent survey available for comparison was a copy of the verified smooth sheet for H-5592, scale 1:10,000, dated June-July-December 1934. The larger differences between this survey and T-12811 are shown in purple on the comparison print.

The extent of Oyster Bed Island has increased and the north tip of Tybee Island has eroded since H-5592 was compiled.

65. COMPARISON WITH NAUTICAL CHARTS:

A visual comparison was made with Chart 440, scale 1:40,000, 35th edition, dated July 25, 1970. Differences between this chart and T-12811 are shown in red on the comparison print.

A wreck is charted at lat.  $32^{\circ}01.4'$ , long.  $80^{\circ}50.2'$ . It also is shown on H-5592 and SAVANNAH BEACH. No object is visible at this position on the photographs.

A reported obstruction is charted at lat.  $32^{\circ}00.8'$ , long.  $80^{\circ}49.6'$ . No image is visible on the photographs at this point.

A pier or groin, not visible on the photographs, is charted at lat.  $32^{\circ}01.3'$ , long.  $80^{\circ}51.7'$ .

66. ADEQUACY OF RESULTS AND FUTURE SURVEYS:

This survey complies with Project Instructions, Bureau requirements, and the National Standards for Map Accuracy. No accuracy tests were run in the field.

Reviewed by:

*Charles H. Bishop*

Charles H. Bishop  
Cartographer  
July 15, 1971



Approved for forwarding:

*Melvin J. Umbach*

Melvin J. Umbach, CDR, NOAA  
Chief, Photogrammetry Division, AMC

Approved:

*Allen L. Powell*

Allen L. Powell, RADM, NOAA  
Director, Atlantic Marine Center

Approved:

*Charles S. ...*

Chief, Photogrammetric Branch

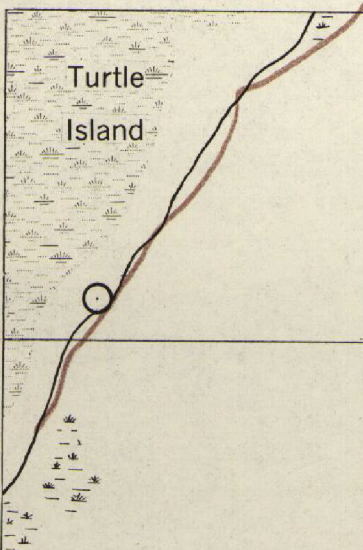
*Jack E. Guth*

Chief, Photogrammetry Division

80° 54' 00"  
32° 03' 45"

53' 30" | x=895,000 FT. GA.

| x=2,035,000 FT. S.C. 53'



03' 30"

y=750,000 FT. GA.

y=80,000 FT. S.C.

32° 03'

COMPARISON PRINT

Brown = FORT PULASKI



⊙ Four legged base of old steel range light



80° 54'

53' 30"

80° 53'

32° 03'

COMPARISON PRINT

Brown = FORT PULASKI  
Purple = H-5592

○ Four legged base of old steel range light

y = 745,000 FT. GA.

02' 30"

Oyster Bed Island

75,000 FT. S.C.

△ QUARANTINE (USE) 1932

64-W-4334

S A V A N N A H R I V E R

32° 02'

Pier

263° TRUE

TYBEE KNOLL CUT RANGE FRONT LIGHT 1964

○ Pile

Ditches

Cockspur Island

y = 740,000 FT. GA.

# N A H R I V E R

80° 53' 30"

5 3'

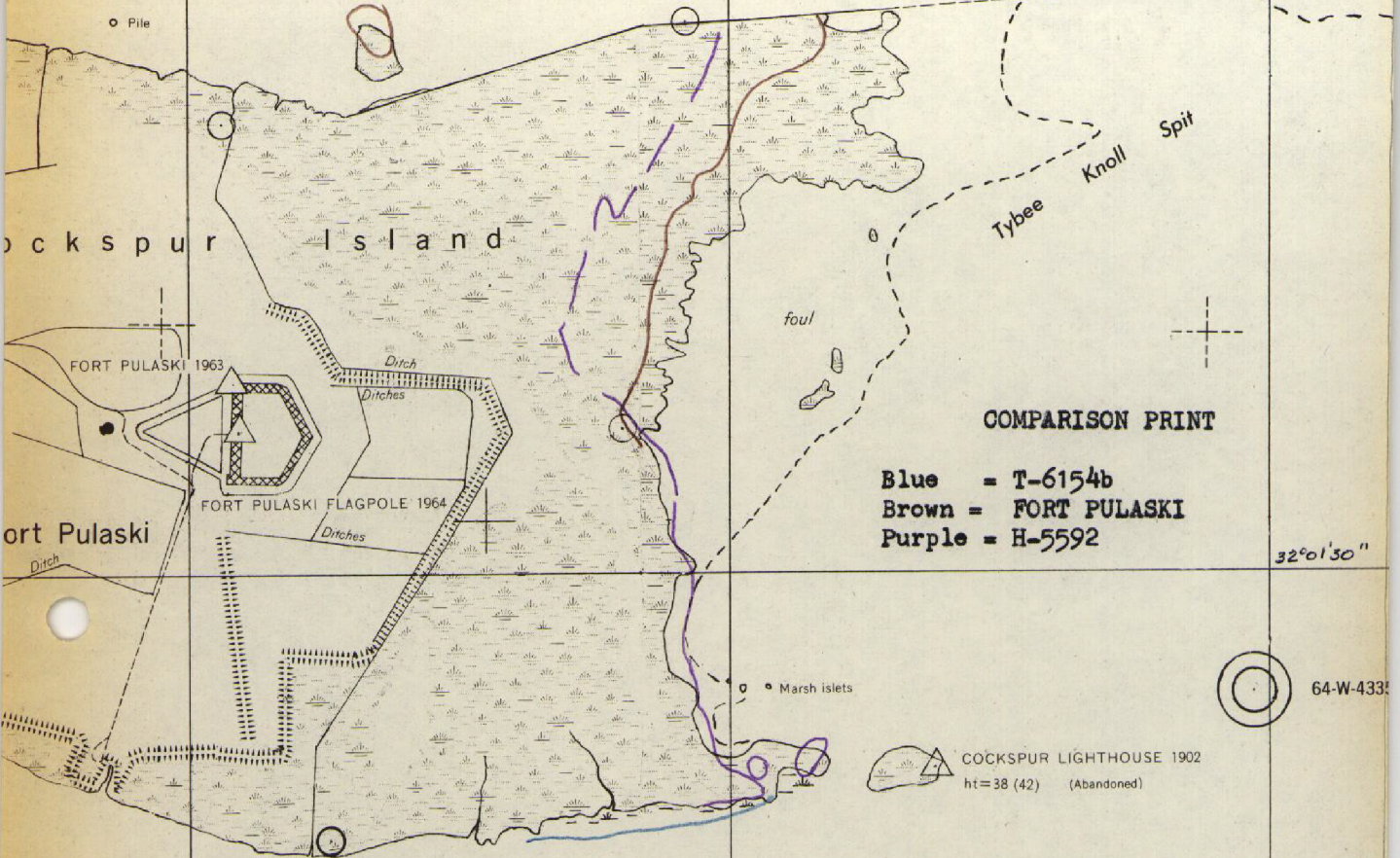
80° 52' 30"

2634° TRUE

32° 02'

NT LIGHT 1964

Pile

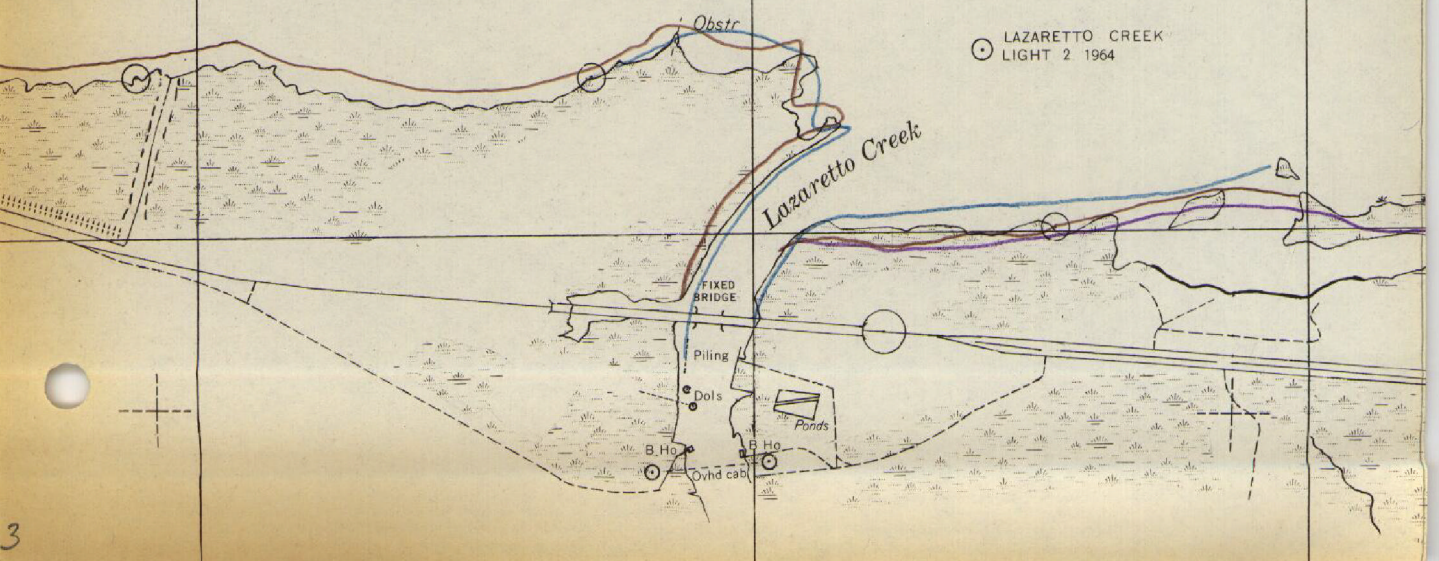


### COMPARISON PRINT

- Blue = T-6154b
- Brown = FORT PULASKI
- Purple = H-5592

32° 01' 30"

# U T H C H A N N E L



80°51'30"

JONES ISLAND RANGE REAR LIGHT 1964

80°51'

JONES ISLAND RANGE FRONT LIGHT 1964

32°02'30"

288.3° TRUE

○ Old pile structure (10)

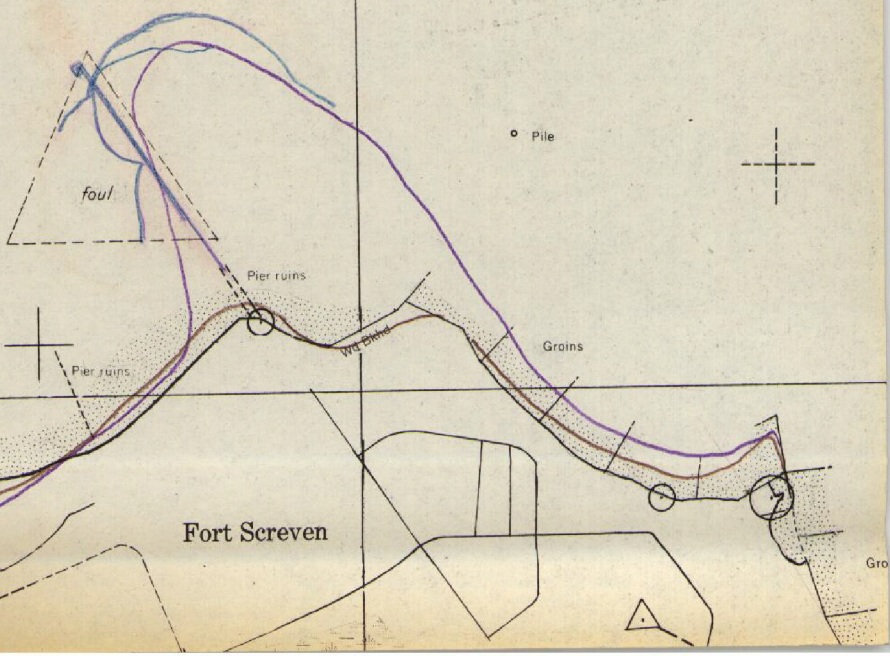
COMPARISON PRINT

Blue = T-6154b

Brown = SAVANNAH BEACH NORTH

Purple = H-5592

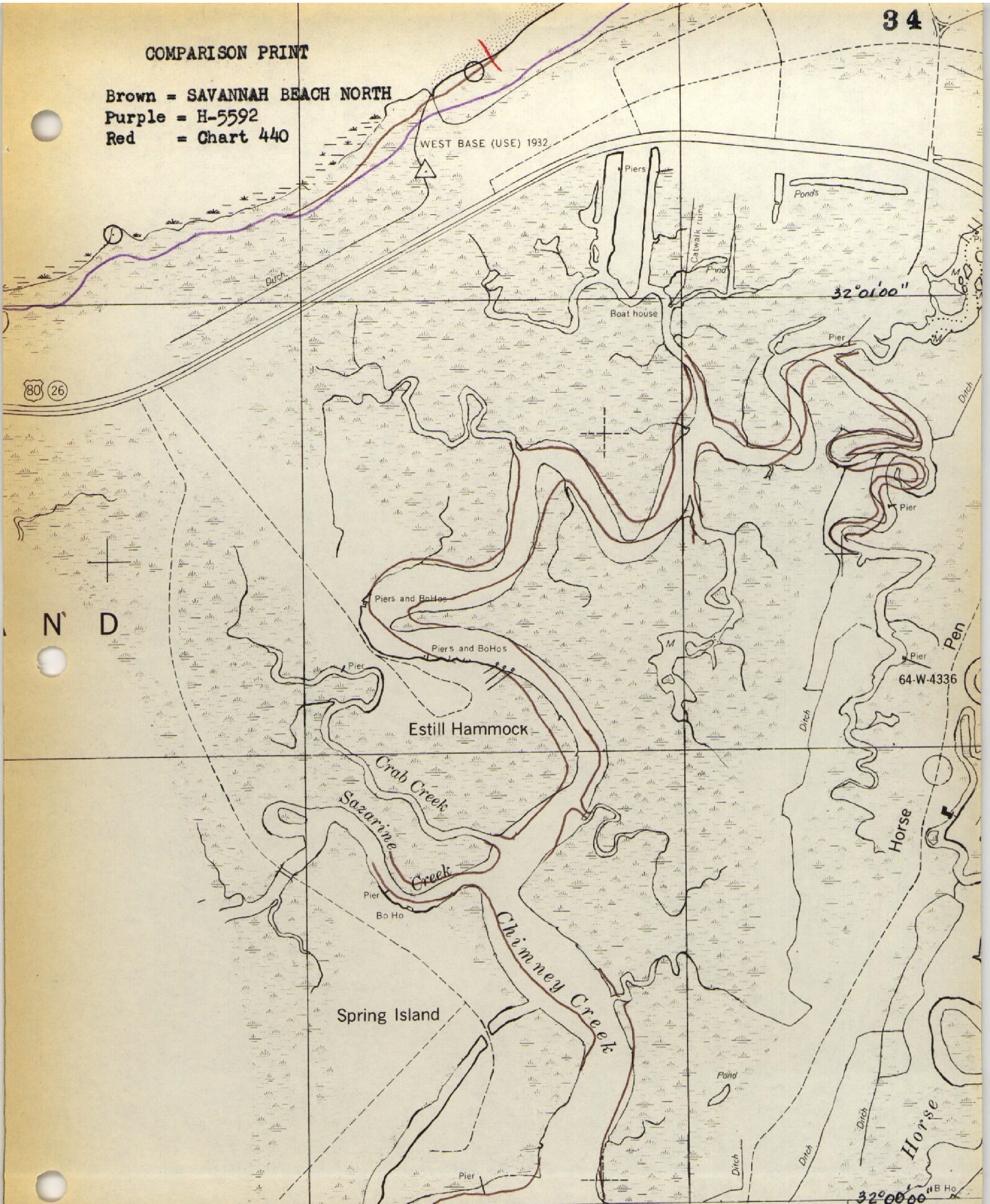
32°02'



COMPARISON PRINT

Brown = SAVANNAH BEACH NORTH  
 Purple = H-5592  
 Red = Chart 440

WEST BASE (USE) 1932



80 26

N D

32° 01' 00"

64-W-4336

32° 00' 00"

x=2,040,000 FT. S.C. 80° 52'

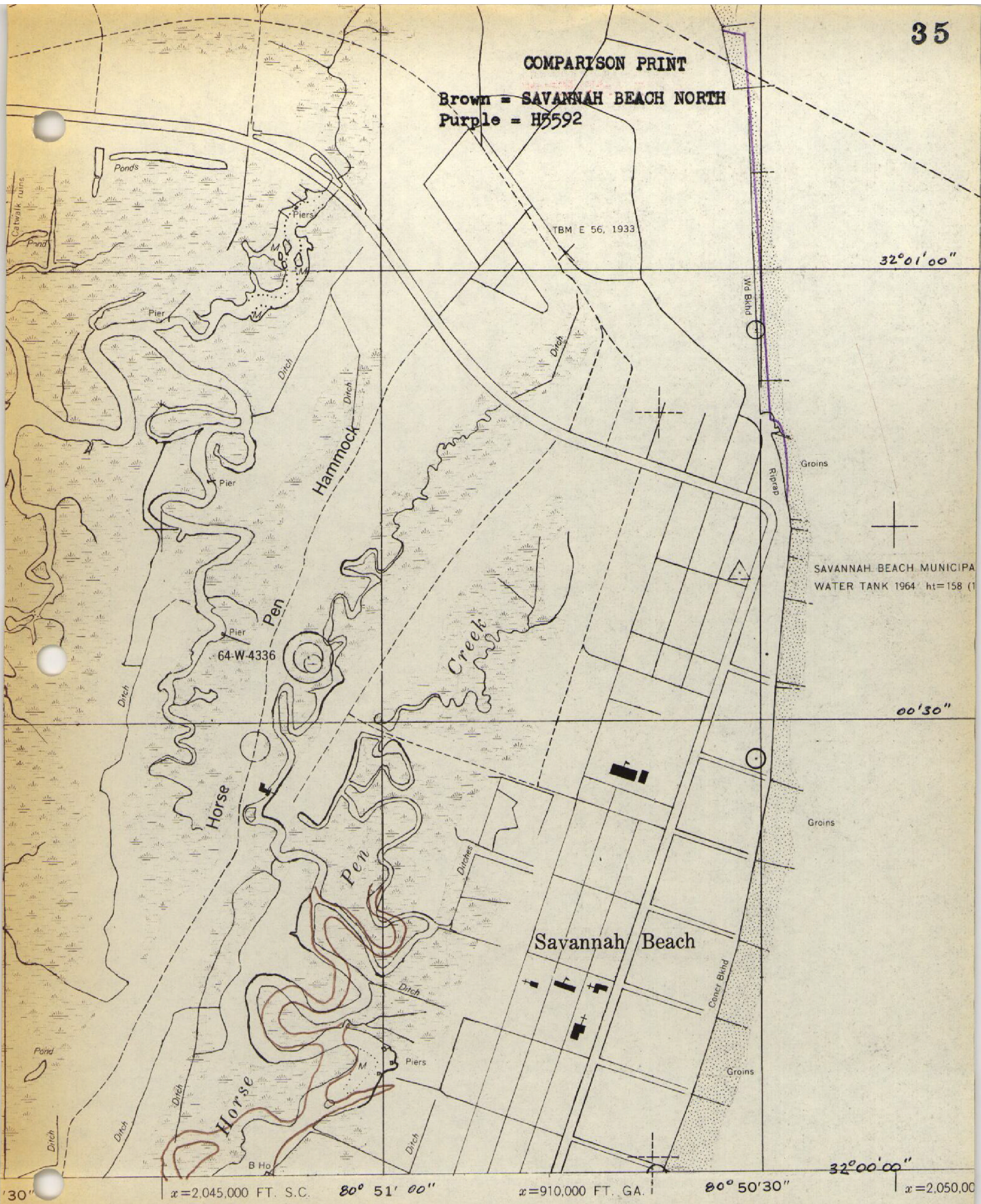
x=905,000 FT. GA.

80° 51' 30"

x=2,045,000 FT. S.

COMPARISON PRINT

Brown = SAVANNAH BEACH NORTH  
Purple = H5592

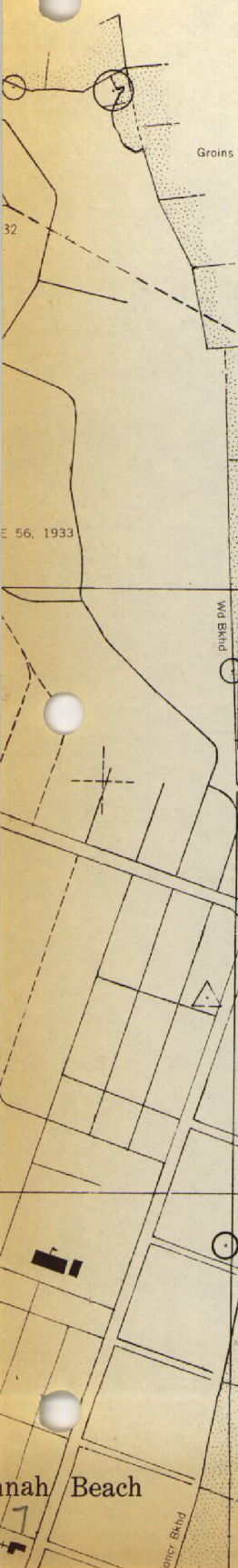


△ Recoverable horizontal control station of third order  
 ○ Recoverable horizontal control station of less than third order

80°50'30"

80°50'

32°01'30"



##



Also shown on chart 440 and H-5592

NOTE:

"The photogrammetric location and delineation of features offshore from the mean high-water line on this survey may not be complete or final. The contemporary reviewed hydrographic survey of the area where available, should be consulted for the final delineation."

COMPARISON PRINT

- Brown = SAVANNAH BEACH NORTH
- Purple = H-5592
- Red = Chart 440

32°01'00"

298° TRUE

obstr rep

Concrete dolphin

32°00'30"

80°50'

nah Beach



