

12498

Diag. Cht. No. 1210-2.

Form 604

U. S. DEPARTMENT OF COMMERCE
COAST AND GEODETIC SURVEY

DESCRIPTIVE REPORT

Type of Survey Chart 263

Field No. Ph-6102 Office No. T-12498

LOCALITY

State Massachusetts

General locality Buzzards Bay

Locality Cuttyhunk & Nashawena Islands

1961-62

CHIEF OF PARTY

J.K.Wilson, Chief of Field Party

J.E.Waugh, Div. of Photo. Wash., D.C.

LIBRARY & ARCHIVES

DATE May 1964

USCOMM-DC 5087

12498

DESCRIPTIVE REPORT - DATA RECORD

T - 12498
(Chart 263)

(P)

PROJECT NO. (III): PH-6102		
FIELD OFFICE (II): Washington D. C.	CHIEF OF PARTY J. Wilson	
PHOTOGRAMMETRIC OFFICE (III): Washington D. C.	OFFICER-IN-CHARGE J. E. Waugh	
INSTRUCTIONS DATED (II) (III): 10 May 1962		
METHOD OF COMPILATION (III): Kelsh Plotter and WILD B-8 Stereoplotter		
MANUSCRIPT SCALE (III): 1:12,000	STEREOSCOPIC PLOTTING INSTRUMENT SCALE (III): 1:12,000	
DATE RECEIVED IN WASHINGTON OFFICE (IV):	DATE REPORTED TO NAUTICAL CHART BRANCH (IV):	
APPLIED TO CHART NO.	DATE:	DATE REGISTERED (IV):
GEOGRAPHIC DATUM (III): NA 1927	VERTICAL DATUM (III): M H W MEAN SEA LEVEL EXCEPT AS FOLLOWS: <i>Elevations shown as (25) refer to mean high water</i> <i>Elevations shown as (5) refer to sounding datum</i> <i>i.e., mean low water or mean lower low water</i>	
REFERENCE STATION (III): Nashawena Island Tower 1913		
LAT.: 41° 25' 36.395"	LONG.: 70° 52' 36.417"	<input checked="" type="checkbox"/> ADJUSTED <input type="checkbox"/> UNADJUSTED
PLANE COORDINATES (IV): Y = 156,141.26 X = 770,927.04		STATE Massachusetts
		ZONE Mainland

ROMAN NUMERALS INDICATE WHETHER THE ITEM IS TO BE ENTERED BY (II) FIELD PARTY, (III) PHOTOGRAMMETRIC OFFICE, OR (IV) WASHINGTON OFFICE.
WHEN ENTERING NAMES OF PERSONNEL ON THIS RECORD GIVE THE SURNAME AND INITIALS, NOT INITIALS ONLY.

DESCRIPTIVE REPORT - DATA RECORD

FIELD INSPECTION BY (II): J. K. Wilson		DATE: 1962
MEAN HIGH WATER LOCATION (III) (STATE DATE AND METHOD OF LOCATION): Photo interpreted from tide observation controlled photographs. Date of Photography Apr., May 1961		
PROJECTION AND GRIDS RULED BY (IV): J. Clark		DATE 8-18-61
PROJECTION AND GRIDS CHECKED BY (IV): G. Everett		DATE 8-18-61
CONTROL PLOTTED BY (III): C. Misfeldt		DATE Nov. 1961
CONTROL CHECKED BY (III): W. Heinbaugh		DATE Nov. 1961
RADIAL PLOT OR STEREOSCOPIC CONTROL EXTENSION BY (III): R. Fuechsel		DATE Oct. 1961
STEREOSCOPIC INSTRUMENT COMPILATION (III): <i>Kelsh Plotter</i> <i>B-8 Plotter</i>	PLANIMETRY C. Misfeldt R. Sugden	DATE Nov. 1961 and July 1962
	CONTOURS	DATE
MANUSCRIPT DELINEATED BY (III): C. Misfeldt R. Carter		DATE Dec. 1961 and July 1962
SCRIBING BY (III):		DATE
PHOTOGRAMMETRIC OFFICE REVIEW BY (III):		DATE

REMARKS:

(3)

DESCRIPTIVE REPORT - DATA RECORD

CAMERA (KIND OR SOURCE) (III):

WILD (S) and (L)

PHOTOGRAPHS (III)

NUMBER	DATE	TIME	SCALE	STAGE OF TIDE
61S 6505 thru 6515	Apr-May 1961		1:15,000	+0.4 *
61S 6522 thru 6531	Apr, May 1961		1:15,000	+0.4 *
61L 1486 thru 61L 1491 * *	Apr, May 1961		1:30,000	-0.2 *

TIDE (III)

	RATIO OF RANGES	MEAN RANGE	SPRING RANGE
REFERENCE STATION: *			
SUBORDINATE STATION:			
SUBORDINATE STATION:			

WASHINGTON OFFICE REVIEW BY (IV): *S. G. Blankenbaker* DATE: *JAN. 1963*

PROOF EDIT BY (IV): DATE:

NUMBER OF TRIANGULATION STATIONS SEARCHED FOR (II): RECOVERED: 5 IDENTIFIED: 5

NUMBER OF BM(S) SEARCHED FOR (II): RECOVERED: None IDENTIFIED: None

NUMBER OF RECOVERABLE PHOTO STATIONS ESTABLISHED (III): None

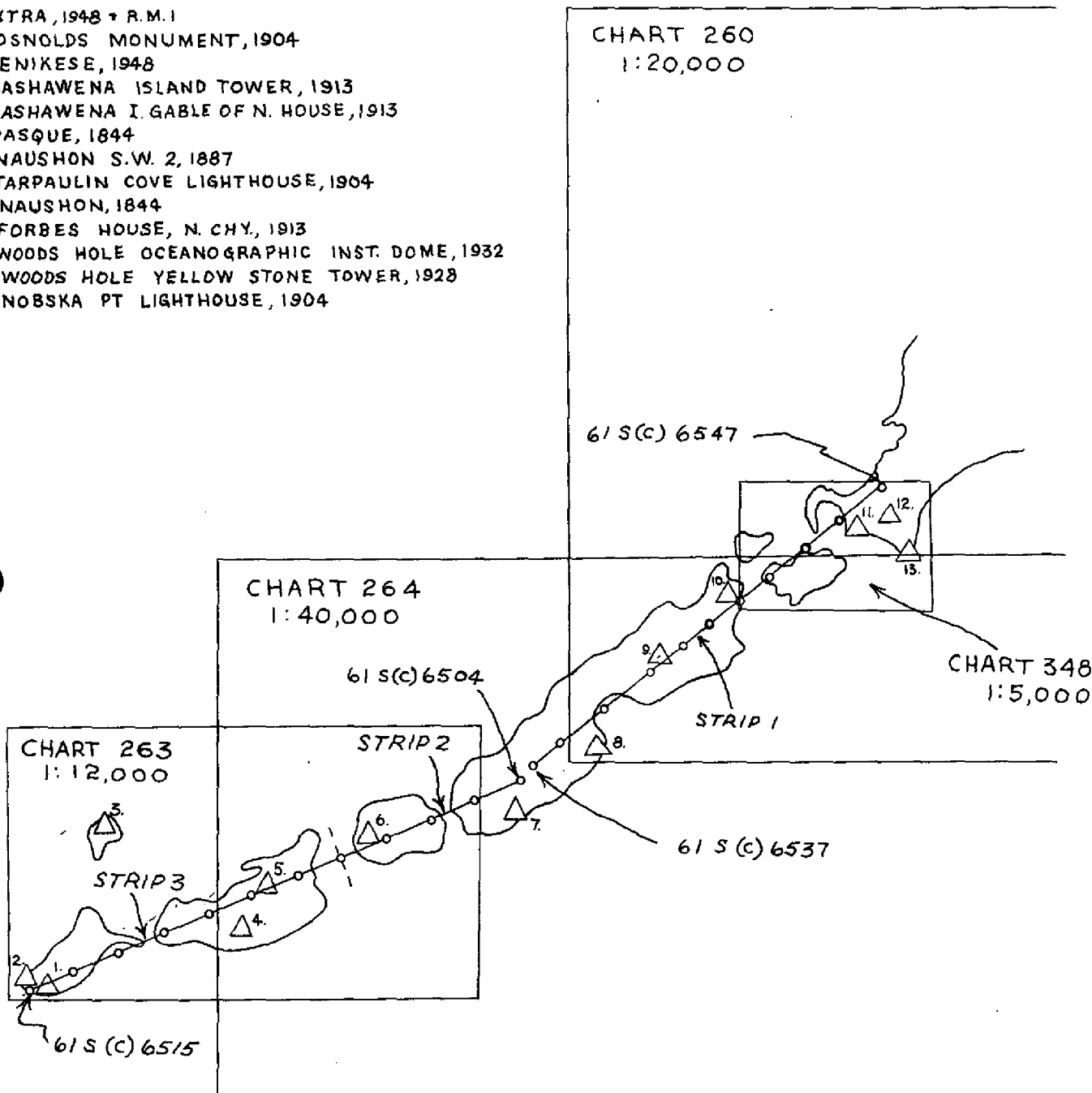
NUMBER OF TEMPORARY PHOTO HYDRO STATIONS ESTABLISHED (III): None

REMARKS:

* See listings of tide stage of Photography in Report.

* * 62S 5530 THRU 5537 - APRIL 1962

- 1. EXTRA, 1948 + R.M.1
- 2. GOSNOLDS MONUMENT, 1904
- 3. PENIKESE, 1948
- 4. NASHAWENA ISLAND TOWER, 1913
- 5. NASHAWENA I. GABLE OF N. HOUSE, 1913
- 6. PASQUE, 1844
- 7. NAUSHON S.W. 2, 1887
- 8. TARPULIN COVE LIGHTHOUSE, 1904
- 9. NAUSHON, 1844
- 10. FORBES HOUSE, N. CHY, 1913
- 11. WOODS HOLE OCEANOGRAPHIC INST. DOME, 1932
- 12. WOODS HOLE YELLOW STONE TOWER, 1928
- 13. NOBSKA PT LIGHTHOUSE, 1904



U.S. DEPARTMENT OF COMMERCE
COAST AND GEODETIC SURVEY
DESCRIPTIVE REPORT
CONTROL RECORD

MAP T. Chart 263 PROJECT NO. PH-6102 SCALE OF MAP 1:12,000 SCALE FACTOR

STATION	SOURCE OF INFORMATION (INDEX)	DATUM	LATITUDE OR ψ -COORDINATE LONGITUDE OR x -COORDINATE	DISTANCE FROM GRID IN FEET. OR PROJECTION LINE IN METERS		DATUM CORRECTION	N.A. 1927 - DATUM DISTANCE FROM GRID OR PROJECTION LINE IN METERS		FACTOR DISTANCE FROM GRID OR PROJECTION LINE IN METERS
				FORWARD	(BACK)		FORWARD	(BACK)	
Nashawena(1913) Island Tower	Vol 1 P 867	NA- 1927	41° 25' 36.395" 70 52 36.417				1122.8 845.6		
Pasque 1844	Vol 1 P 219		41 26 57.274 70 50 04.579				1766.9 106.3		
Pasque, 1844 Sub Pt 1									
Sub Pt 2									
Gosnolds Monument 1904	Vol 1 P 408								
Extra 1948	Vol 1 P 520		41 24' 42.929" 70 52 01.519				1,324.4 574.1		
Extra 1948 RM 1									
Nashawena Is. Gable of N. House 1913(West Gab)	Vol 1 P 867		41 26 12.718 70 52 24.718				392.4 35.3		
Penikese 1948	Vol 1 P 520		41 27 03.516 70 55 26.254				108.5 609.4		
Penikese 1948 Sub Pt 1								(6)	
Sub Pt 2									

Summary To Accompany Descriptive Report
Chart Drawing 263 (T-12498)
Topography

This compilation is one of ^{ten} eleven similar chart drawings of topography ranging in scale from 1:5,000 to 1:40,000 in Project 6102. The project initiated to test the practicability of compiling nautical chart topography by photogrammetric methods, covers the south shore of Cape Cod, the Elizabeth Islands, Martha's Vineyard Island and Nantucket Island.

U. S. DEPARTMENT OF COMMERCE
COAST AND GEODETIC SURVEY

NONFLOATING AIDS OR LANDMARKS FOR CHARTS

TO BE CHARTED
TO BE REVISED
TO BE DELETED } STRIKE OUT TWO

Aug. 15, 1962

I recommend that the following objects which have (have not) been inspected from seaward to determine their value as landmarks be charted on (deleted from) the charts indicated.

The positions given have been checked after listing by J. P. Battley, Jr.

J. K. Wilson

(N.C. 263)

Chief of Party

CHARTING NAME	DESCRIPTION	SIGNAL NAME	POSITION		METHOD OF LOCATION AND SURVEY NO.	DATE OF LOCATION	HARBOR CHART	LIGHT HOUSE NO.	CHARTS AFFECTED
			LATITUDE	LONGITUDE					
		S. M. SYSTEMS		DATUM					
		S. M. SYSTEMS		S. M. SYSTEMS					
Lt.	Outthunk Light		41 24	70 57	Photo	9/12/62*			263
Lt.	North Jetty Light		41 25	70 55	"	9/12/62*			263
En.	South Jetty Daybeacon		41 25	70 55	"	9/12/62*			263

* Date Verified

This form shall be prepared in accordance with Hydrographic Manual, pages 800 to 804. Positions of charted landmarks and nonfloating aids to navigation, if redetermined, shall be reported on this form. Revisions shall show both the old and new positions. The date should be considered for the charts of the area and not by individual field survey sheets. Information under each column heading should be given.

USCGM-DC 27128

U.S. DEPARTMENT OF COMMERCE
COAST AND GEODETIC SURVEY

NON-FLOATING AIDS OR LANDMARKS FOR CHARTS

TO BE CHARTED
TO BE REVISED
TO BE DELETED

STRIKE OUT TWO

AUG. 15 1962

I recommend that the following objects which have (have not) been inspected from seaward to determine their value as landmarks be charted on (deleted from) the charts indicated.

The positions given have been checked after listing by J. P. Battley, Jr.

(N.O. 263)

J. K. Wilson

Chief of Party

CHARTING NAME	DESCRIPTION	SIGNAL NAME	POSITION				METHOD OF LOCATION AND SURVEY	DATE OF LOCATION	NUMBER CHART	APPROX. CHART	CHARTS APPROPRIATE
			LATITUDE		LONGITUDE						
			D. M. S.	D. M. S.	D. M. S.	D. M. S.					
Monument	Stone about 60' high		41-24	50.578	70 56	54.720	Triangulation	9/12/62			263
Lookout Tower	Goenolds Monument 1904 Outtyhunk Island Lookout Tower		41-25	442.0	70 56	69.5	Photogrammetry	4/9/61			263
Monument	Stone 16' high		41-25	36.395	70 52	36.417	Triangulation	9/12/62			263
** House	Mashewena Is. Tower 1913 E. Gable of 2 story red clap-board house ht. 30' (80) (Nashawena Island of N. House 1913)		41-26	1122.8	70 52	845.6	Triangulation	9/12/62			263
			41-26	12.718	70 52	01.519	"	4/9/61			263
				392.4	70 52	35.3					
** Note:	East Gable of house is station (Refer to Bridging report PH-6102)										
* Date	Verified										

This form shall be prepared in accordance with Hydrographic Manual, pages 200 to 204. Positions of charted landmarks and non-floating aids to navigation, if redetermined, shall be reported on this form. Revisions shall show both the old and new positions. The data should be considered for the charts of the area and not by individual field survey sheets. Information under each column heading should be given.

1. 2/62
 CHART 243
 DRAWING
 SHEET
 REVISION

HISTORY OF CARTOGRAPHIC WORK - NAUTICAL CHART DIVISION FILES

REMARKS (over)

LITH Rec'd _____
 LITH Ver _____
 PRINT DATE _____

TO REPRODUCTION
 NC NE NP NP TO
 DATE

NC REC COME FUTURE
 DATE

Item #	SOURCE OF INFORMATION			LOCALITY	Type of Information	Time (hrs)	Completed	Items	Verified by	Started	Completed	Time (hrs)
	File No	Date	Authority									
1	Photos color ? 65507-65508 65522-65533 65559-65560 65570-65576	April 1962	CYGS	Entire Chart	TOPO							
2	Infrared Photos 661488-1491	APRIL 1962	CYGS	Entire Chart	TOPO							
3	Forms 567	AUG. 1962	CYGS	Entire Charts	LANDMARKS AIDS							
4	Field Edit: Discrepancy Print Report Color prints: 65507, 65517, 65519, 65525, 65526, 65535 6962 Photos	Sept 1962	CYGS	Entire Chart	TOPO							
5	655530-5537	APRIL 1962	CYGS	Entire Chart	TOPO							
6												
7												
8												
9												
10												
11												
12												
13												
14												
15												
16												
17												
18												
19												
20												
21												
22												
23												
24												
25												
26												
27												
28												
29												
30												
31												
32												
33												
34												
35												
36												
37												
38												
39												
40												
41												
42												
43												
44												
45												
46												
47												
48												
49												
50												
51												
52												
53												
54												
55												
56												
57												
58												
59												
60												
61												
62												
63												
64												
65												
66												
67												
68												
69												
70												
71												
72												
73												
74												
75												
76												
77												
78												
79												
80												
81												
82												
83												
84												
85												
86												
87												
88												
89												
90												
91												
92												
93												
94												
95												
96												
97												
98												
99												
100												

Handwritten initials and a circled 'S' in the top right corner.

Planimetric details and low water lines -
 The eastern half of the manuscript was
 compiled with the Kelsch Plotter using
 diapositives. The western half was
 compiled using color photography direct with
 the B-8 Plotter.
 New line and bare rocks comp. in area
 introduced into prints.
 All landmarks and aids were located
 by triangulation or photo plot
 All field edit additions, deletions and
 corrections.
 Entire chart (except Peleuse Island) checked
 with 1962 photography. One shoreline change
 applied (east end of Corvubank Island)

Completed
 Started
 Verified by
 Time (hrs)

65519
 AUG 1962
 1 30

65520
 SEPT 1962
 1 30

65521
 DEC 1962
 10

1-2-3
 1-2-3
 4-5

J. BARNLEY
 S. Blankenbiller

SEPT 1962
 SEPT 1962
 JAN 1963

20 hrs
 20 hrs
 20 hrs

(79)

COLOR PHOTOGRAPHY (LOW WATER)

NO.	PHOTO NOS.	SCALE	STAGE OF TIDE
151	61-S-6534 thru 6549	1:15,000	Hole + 0.4 Wood + 0.7
152	6502 "	"	Hole + 0.4
153	6522 "	"	Hole + 0.4
154	6550 "	"	Hole + 0.4 Bart + 0.5
155	6761 " 6795	"	Chat + 0.3
156	{ 6808 } " 6824	"	Chat + 0.5 Port + 1.0
156	{ 7634 } " 7652	"	Chat + 0.1 Port + 0.2
157	6951 "	"	Port + 0.3
158	6965 "	6971 6981	Port + 0.3
159	6929 "	6949	Port + 0.3 Yard + 0.2
1510	6997 "	6928	Port + 0.4 Yard + 0.2
1511	6894 "	6906	Yard + 0.2
1512	6561 "	6575	Bart + 0.55
1513	7778 "	7798	Wood + 0.0 Bite + 0.1
1514	7676 "	7687	Bite + 0.3
1515	6574 "	6582	Gay + 0.8
1515	7667 "	7675	Bite + 0.2
1516	7688 "	7713	Bite + 0.4
1516	7709 "	7824	Bite + 0.15
1517	6698 "	6706	Vine + 0.4
1518	6625 "	6633	Tuck - 0.1
103	7826 "	7836	Wood 0.0
1519	6707 "	6723	Vine + 0.4

101	✓ 6729 "	6748	1:10,000	Chat + 0.1
101	✓ 6762 "	6780	"	Chat + 0.1
102	✓ 6782 "	6794	"	Chat + 0.2
103	7658 "	7666	"	Wood + 0.4
104	6675 "	6683	"	Vine + 0.4
105	6667 "	6674	"	Vine + 0.4
106	6685 "	6697	"	Vine + 0.4
107	6656 "	6663	"	Tuck - 0.1
108	6634 "	6655	"	Tuck - 0.1
109	6584 "	6590	"	Gay + 0.8

201	6607 "	6624	1:20,000	Tuck - 0.1
202	6856 "	6870	"	Yard + 0.4 Wood + 0.7

NONFLOATING AIDS OR LANDMARKS FOR CHARTS

TO BE DELETED
FROM CHARTS
WHICH ARE
TO BE DELETED

STRIKE OUT TWO

Yarmouth Port, Massachusetts

I recommend that the following objects which have ~~been~~ been inspected from seaward to determine their value as landmarks be ~~deleted~~ *(deleted from)* the charts indicated.

The positions given have been checked after listing by E. W. Hartford

Joseph K. Wilson

Chief of Party.

CHARTING NAME	STATE	DESCRIPTION	SIGNAL NAME	POSITION						METHOD OF LOCATION AND SURVEY NO.	DATE OF CHECKS Verified	HARBOR CHART	INSHORE CHART	OFFSHORE CHART	CHARTS AFFECTED	
				LATITUDE*		LONGITUDE*		DATUM	D. P. METERS							D. P. METERS
				° ' "	° ' "	° ' "	"									
TANK	Massachusetts	Tank--NE of lookout tower		41-25	487.7	70-56	21.3	NA 1927		Photo Plot	12 Sep 62	X			263	

15

This form shall be prepared in accordance with Hydrographic Manual, Publication 20.2, Sec. 1-55, 2-39, 6-36, 7-18 to 22 inclusive, and Fig. 79. Positions of charted landmarks and nonfloating aids to navigation, if redetermined, shall be reported on this form. Revisions shall show both the old and new positions. The data should be considered for the charts of the area and not by individual field survey sheets. Information under each column heading should be given.

* TABULATE SECONDS AND METERS

(20)

INFRARED PHOTOGRAPHY (HIGH WATER)

FLIGHT NO.	PHOTO NOS.	SCALE	STAGE OF TIDE
151A	61-L-1681 thru 1695	1:15,000	Chat 0.0
301	61-L-1609 "	1619	1:30,000 Chat - 0.1
302	1621 "	1623	" Chat - 0.4 Port + 0.1
303	1635 "	1641	" Chat - 0.6 Port - 0.1
304	1652 "	1662	" Port - 0.3
305	1644 "	1650	" Port - 0.1 Yard - 0.2
306	1530 "	1539	" Yard - 0.1
307	1496 "	1502	" Wood 0.0 Bart - 0.2
308	1479 "	1491	" {Hole - 0.2 Wood 0.0 Bart
309	1515 "	1528	" Gay + 0.4
310	1504 "	1513	" Gay + 0.4 Wood 0.0
311	1547 "	1555	" Vine - 0.2
312	1541 "	1545	" Vine - 0.2
313	1557 "	1567	" Tuck - 0.1
314	1589 "	1597	" Tuck 0.0
315	1599 "	1607	" Tuck + 0.2
316	1578 "	1587	" Tuck + 0.15
301	1664 -	1667	" Chat - 1.0

301

(9)

PHOTOGRAMMETRIC PLOT REPORT
CAPE COD, MASS.
PH-6102
OCT. 1961

21. Area Covered:

Shoreline areas of the following charts: 250, 257, 258, 259, 260, 263, 264, 348.

22. Method:

Ten stereoplanigraph bridges comprising a total of 60 models were run in order to determine positions of various landmark objects and photo-topo points, and to provide pass points for use in Kelsh compilation of the project. Adjustment of strips 1, 4, 5, 8, and 10 was done on a least-squares basis by the IBM 650 computer. Strips 2, 3, 6, 7, and 9 were given a linear adjustment on the Clary computer. The adjustments of all strips in the project were adequately checked by number and placement of extra control stations, and/or points common to other strips.

23. Adequacy of Control:

Horizontal control provided complied with project instructions, and was adequate. All control held in bridging, with the following two exceptions: (1) Δ NAUSHON, 1844-R.M. 2 was 19 feet out in X and 36 feet out in Y. It is believed that the point was mis-identified in the field. This station may be disregarded inasmuch as its companion station (Δ NAUSHON, 1844-S.S. 1) held well in bridging. (2) Δ PASQUE, 1844-S.S. 2 was out 15 feet in X and 79 feet in Y. The adjustment, which was based on Δ PASQUE, 1844-S.S. 1, gives a good closure on the home station. Therefore, S.S. 2 may be disregarded. A mis-identification of S.S. 2 in either office or field could account for the error.

Δ Nashawena Island, Gable of N. House, 1913 was identified by the field man as a landmark rather than as Δ because no data could be found which stated whether the E. gable or the W. gable was the station. The results of bridging indicate that the E. gable is the station.

24. Supplemental Data:

None.

(9)

25: Photography:

Bridging was performed on both infrared photography and on black and white dianegatives made from color photos. The overall photographic quality of the black and white negatives was poor. There was a marked deficiency in tonal gradation and an extreme graininess, both of which contributed to a general lack of clarity. The quality of the infrared photography was better, although still inferior to panchromatic photography. These deficiencies probably can be overcome in the compilation phase by supplemental graphic compilation using the color photographs.

Submitted by:

R. Fuchs by *ETB*
R. Fuchs

Approved by:

⁶
E. H. Raney
E. H. Raney, Chief
Aerotriangulation Section

(10)

Compilation Report
Chart 263
PH - 6102
August 1962

31. Delineation

This manuscript was compiled directly at the charting scale of 1:12,000. Delineation of topography, shoreline and off shore features was done with the Kelsh plotter in the eastern half of the manuscript and verified by the Wild B-8 plotter. The western half of the manuscript was delineated with the B-8 plotter. The Kelsh Plotter utilized dianegatives from the color photography whereas the color film was used direct on the B-8 set between glass plates, resulting in stereo models of unusual clarity and color contrast for detailed delineation of rocks and underwater features.

Field inspection was limited to control identification. The reef area off the southwest shore of Cuttyhunk island was not compiled as the photos were over water without adequate control.

32. Control

Bridge points were provided for control of the models (See Photogrammetric Plot Report). Water level established from tide data at time of photography was used for vertically controlling the models.

33. Supplemental data -

Inapplicable.

34. Contours and drainage -

Inapplicable.

35. Shoreline and alongshore features -

The MHWL and all alongshore features were delineated on the B-8 plotter using the low water color photography. Rock datums were established by measurements from low water. The infra red photos were used as reference and for verification of the MHWL. On the part compiled by the Kelsh plotter the high water line was transferred directly from the infra red

photos holding to common shoreline features for control. The low water photography afforded a thorough investigation of low water features and sunken rocks. Low water was office interpreted from the low water color photographs.

36. Offshore details.

No unusual problems were encountered.

37. Landmarks and Aids.

Form 567 was submitted for all landmarks and aids visible on the photography.

Refer to Field Edit Report (Page 13)

38. Control for future surveys.

Topo Control - None

Photo Hydro - None

39. Junctions -

A junction was made on the east edge at the neat line with the adjoining chart compilation work.

40. Horizontal and vertical accuracy

See paragraph 32

41. Supplemental Information

Penikese and Gull Islands were compiled from color photographs 61S, 6125, and 6126 on the B-8 plotter holding scale between Penikese, 1948 and a bridge point and detail from a model on Nashawena Island.

44. thru 45. - Inapplicable.

46. Comparison with existing maps.

Chart 263

1:12,000

Items to be applied to Nautical Charts immediately - None.

Items to be carried forward - None.

Compiled by:

Robert L. Sugden
Robert L. Sugden

Approved by:

K. N. Maki
K. N. Maki
Chief, Compilation Section



13

FIELD EDIT REPORT
Project PH-6102
Chart 263
Cuttyhunk Island, Massachusetts

GENERAL NOTES

The area was field-edited during the period of 10 September through 13 September 1962. Corrections and additions have been inked on the color photographs in black and referenced on the discrepancy print in purple. Most of the area was inspected at or near low-water. The tidal data was transmitted by walkie-talkie radio from tidal bench marks.

All nautical landmarks and fixed aids to navigation were visually checked and were verified except for the tank on Cuttyhunk Island. The tank is shown on a new form 567 for deletion. All other landmarks and aids, with their verification dates, are shown on the old form 567.

No new landmark buildings are recommended. Those shown on the field edit sheet are correct.

The shore end of a telephone submarine cable, linking Cuttyhunk Island to Mishaum Point (near New Bedford), has been shown on the photograph.

The rock delineation, as a whole, appeared to be excellent. The field editor has thoroughly checked the outside rocks along the shore at low water.

Bluff delineation was very good. There were no recommendations for this phase.

Field Edit notations are inked on the following color photographs: 61-S-6507, 6513, 6514, 6525, 6526, and 6535.

Joseph K. Wilson
Joseph K. Wilson
Chief, Photo Party 720
13 September 1962

REVIEW REPORT
TOPOGRAPHY
Nautical Chart Drawing 263 (T-12498)

January 1963

61. General Statement

A new edition (2nd. Ed., Oct. 15, 1962) of Chart 263 was published subsequent to the application of field edit data to the subject drawing. The subject drawing was submitted to the Nautical Chart Division for use in preparing the new edition.

62. Comparison with Nautical Charts

263 - 1:12,000 - 2nd. Ed., Oct. 15, 1962

Minor differences exist between the new drawing and the published chart in shoreline and interpretation of four areas. New piling etc. and shoreline changes located through field edit and the 1962 photography are charted on the new drawing.

63. Adequacy of Results and Future Surveys

This drawing meets horizontal accuracy requirements.

Reviewed by:

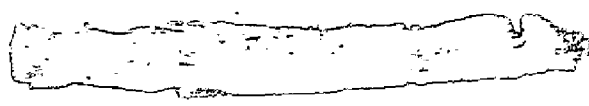
S. G. Blankenbaker
S. G. Blankenbaker

Approved by:

Charles L. ...
Chief, Cartographic Branch
reh.



J. Waugh 1/31/64
Chief Photogrammetry Division



RECORD OF APPLICATION TO CHARTS

FILE WITH DESCRIPTIVE REPORT OF SURVEY NO. T-12498

INSTRUCTIONS

- A basic hydrographic or topographic survey supersedes all information of like nature on the uncorrected chart.
1. Letter all information.
 2. In "Remarks" column cross out words that do not apply.
 3. Give reasons for deviations, if any, from recommendations made under "Comparison with Charts" in the Review.

CHART	DATE	CARTOGRAPHER	REMARKS
263	8-25-62	L.V. Evans	Full Part Before After Verification Review Inspection Signed Via Drawing No. <u>Bp 62638</u>
263	6-23-64	J.T. Gallahan	Full Part Before After Verification Review Inspection Signed Via ^{Sp Not found - considered with drawn to prepare permanent copy, rec 6-30-64} Drawing No. <u>Bp 63808</u> applied thru partial application of T-12498
263	6-23-64	R.E. Elkins	Full Part Before After Verification Review Inspection Signed Via Drawing No. Deleted sho, pier and added rocks per Field edit and review
249	11-20-64	A. J. Lunday	Full Part Before After Verification Review Inspection Signed Via Drawing No.
264	3-19-65	J.T. Gallahan	Full Part Before After Verification Review Inspection Signed Via Drawing No. #3 <u>NO CONNECTION</u>
1210	5-21-65	J.T.G.	Full Part Before After Verification Review Inspection Signed Via Drawing No. <u>45</u> <u>no correct additions from ch 249</u>
			Full Part Before After Verification Review Inspection Signed Via Drawing No.
1210	4/21/69	N. Quimby	Full Part Before After Verification Review Inspection Signed Via Drawing No. <u>50</u> <u>no connection</u>
263	10-26-72	J. Bailey	Full Part Before After Verification Review Inspection Signed Via Drawing No. <u>8</u> <u>FULLY APPLIED</u>
249	3-26-73	J. Bailey	Full Part Before After Verification Review Inspection Signed Via Drawing No. <u>35</u> <u>Applied thru Drwg 263#9</u>
114sc "E" "O" INSETS 445		DL Pollock	FULLY APPLIED THRU CH 263 #9

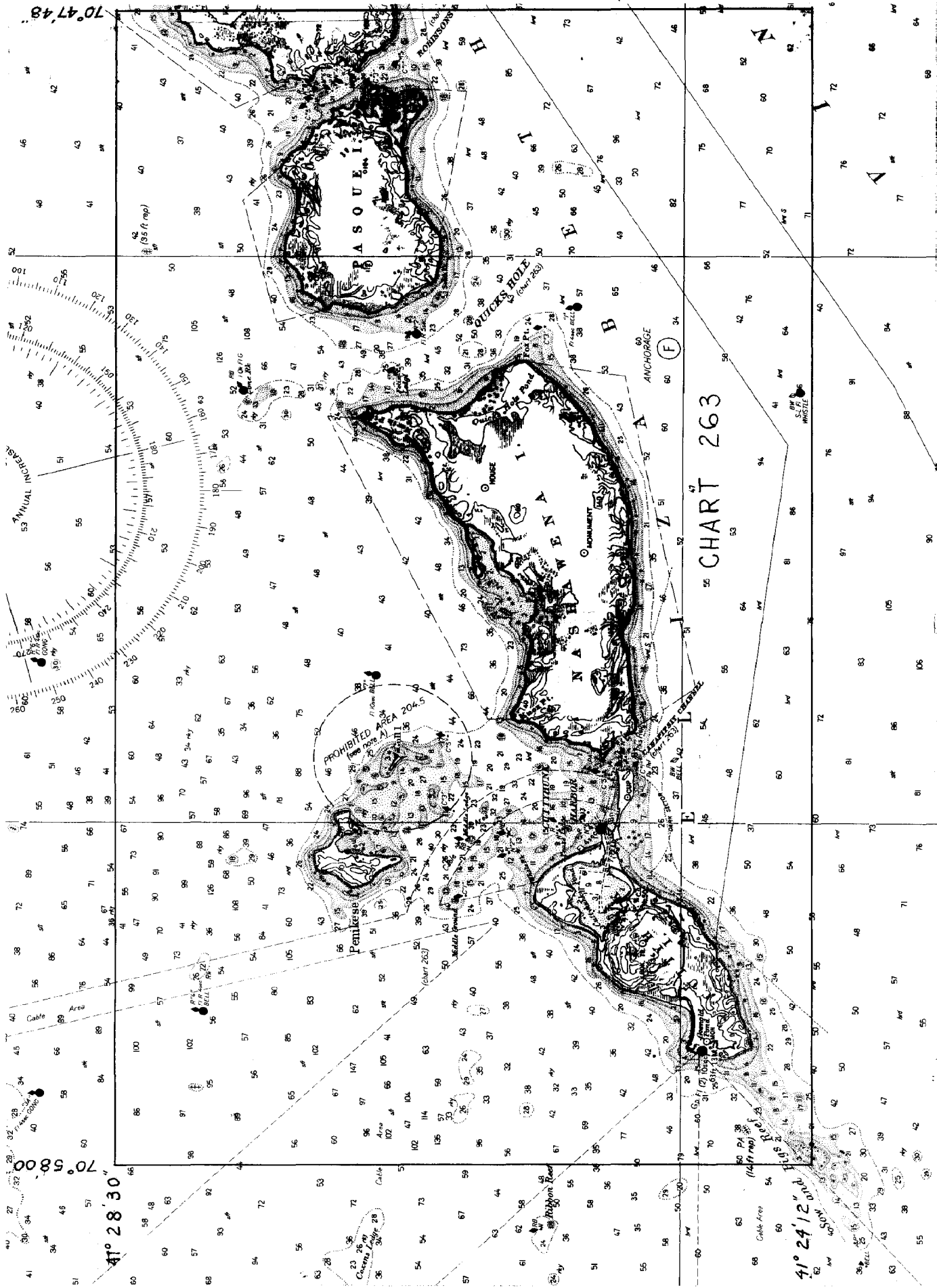


CHART 263

41° 28' 30"

41° 24' 12"

170° 47' 48"

170° 08' 00"