

8589

Diag'd. on Diag. Ch. No. 1202

Form 504

U. S. COAST AND GEODETIC SURVEY
DEPARTMENT OF COMMERCE

DESCRIPTIVE REPORT

Type of Survey Planimetric Air Photographic
(Shoreline)

Field No. CS-272-E Office No. T-8589

LOCALITY

State Maine

General locality Frenchman Bay

Locality Flanders Bay, Gouldsboro Harbor

1944-'45

CHIEF OF PARTY

D.E. Sturmer

LIBRARY & ARCHIVES

DATE

June 29 - 1949

8-1870-1 (11)

8589

Partially applied to acct 305 9-3-53 MHD
applied to account 305 - 1/8/58 - JFW

α

C

DATA RECORD

T- 8589

Quadrangle (II):

Project No. (II): GS-272 E

Field Office:

Chief of Party: ~~Fred. L. Peacock~~
D. E. Sturmer

Air Photographic Party No. 2

Compilation Office:

Chief of Party: Fred. L. Peacock

Baltimore Photogrammetric Office

Instructions dated (II III):

Copy filed in ^{Division of} Descriptive

April 1, 1942 (Additional)
 - July 10, 1943 (Horizontal control Requirements)
 March 18, April 11 & July 17, 1944 (Supplemental)
 August 10, 1944 (Additional) - August 28, 1944 (Amendment to Additional Instructions)
 Completed survey received in office;

Report No. ~~E~~ ^(VI)
 Photogrammetry Office file

Reported to Nautical Chart Section:

Reviewed: 1 Sept. 1948 Applied to chart No. Date:

Redrafting Completed:

Registered: 20 June 1949

Published:

Compilation Scale: 1:10,000

Published Scale:

Scale Factor (III): 1.000

Geographic Datum (III): N.A. 1927

Datum Plane (III): MHW

Reference Station (III): HOVEY, 1860, r. 1934, r. 1944.

Lat.: 44° 29' 18.940" 584.6 m. Long.: 68° 02' 12.026" 265.7 m. Adjusted
Unadjusted

State Plane Coordinates (VI):

X =

Y =

Military Grid Zone (VI)

PHOTOGRAPHS (III)

(Unmounted) - Single Lens Ratio Prints)

| <u>Number</u> | <u>Date</u> | <u>Time</u> 75th meridian | <u>Scale</u> | <u>Stage of Tide</u> |
|--------------------------------|-------------|------------------------------|--------------|----------------------|
| 44-C-851 to 44-C-855, Incl. | 5-16-44 | 10:30 A.M. | 1:10,000 | .6' above M.L.W. |
| 44-C-863 to 44-C-868, Incl. | 5-16-44 | 10:45 A.M. | 1:10,000 | .4' above M.L.W. |
| 44-C-896 to 44-C-901, Incl. | 5-16-44 | 11:45 A.M. | 1:10,000 | .2' above M.L.W. |
| 44-C-913 to 44-C-917, Incl. | 5-16-44 | 12:00 A.M. | 1:10,000 | .4' above M.L.W. |
| 44-C-934 to 44-C-939, Incl. | 5-16-44 | 12:30 P.M. | 1:10,000 | .9' above M.L.W. |

Tide from (III); Predicted Tide Tables, Atlantic Ocean, 1944. Reference Station: EASTPORT, MAINE, with corrections to JETTEAU POINT and to EASTERN POINT HARBOR.

Mean Range: 10.8' (Jetteau Point) Spring Range: 12.3' (Jetteau Point)
10.5' (Eastern Point Harbor) 12.0' (Eastern Point Harbor)

Camera: (Kind or source) U. S. Coast & Geodetic Survey Wide Angle Single Lens
Camera. Type "C", Focal length 6". All negatives are on file in the Washington Office.

Field Inspection by: Lieut. Dale E. Sturmer date: October & November, 1944, and July 1945.

Field Edit by: None date:

Date of Mean High-Water Line Location (III); As of the photographs taken on May 16, 1944, supplemented by the field date obtained during October and November 1944, and July 1945.

Projection and Grids ruled by (III) S.R. date: 3-26-45

" " " checked by: S.R. date: 3-26-45

Control plotted by: H. R. Rudolph date: 4-3-45

Control checked by: A. L. Goncharsky date: 4-4-45

Radial Plot by: W.E. Schmidt & H. R. Rudolph date: April 1945

Detailed by: Ruth M. Whitson date: 10-4-45 to 3-8-46
(Shoreline and immediate adjacent culture).

Reviewed in compilation office by: Raymond Glaser date: March 1946

Elevations on ^{Map Manuscript} ~~Field Edit Sheet~~ checked by: date:

STATISTICS (III)

Land Area (Sq. Statute Miles); $6\frac{1}{2}$.

Shoreline (More than 200 meters to opposite shore); 32 Statute Miles.

Shoreline (Less than 200 meters to opposite shore); 10 Statute Miles.
Measured along centerline of streams.

Photo
Number of Recoverable/Topographic Stations established; 8

Photo (Topographic)
Number of Temporary/Hydrographic Stations located by radial plot; 78

Leveling (to control contours) - miles;

Roman numerals indicate whether the item is to be entered by,

(II) Field Party, (III) Compilation Party, or, (VI) the Washington Office.

When entering names of personnel on this record give the surname
and initials (not initials only).

Remarks:

FIELD REPORT
SURVEY No. T-8589

COAST OF MAINE
FLANDERS BAY, GOULDSBORO HARBOR
Project No. CS-272-K

1. DESCRIPTION OF THE AREA:

According to Instructions, dated August 10, 1944, the Survey for Map Manuscript, Survey No. T-8589, is a shoreline survey and covers an area of Flanders Bay and Gouldsboro Harbor.

The terrain immediately adjacent to the Mean High-Water Line is, in general, rocky. The foreshore area is commonly ledge rock with stretches of mud, sand, gravel, boulders, and grass-in-water.

The interior is hilly and mostly tree covered, with the elevation rising from sea level to a maximum of 276 feet. Several large ponds and low ground areas lie within the limits of this survey.

2. COMPLETENESS OF FIELD INSPECTION:

The identification of the horizontal control, Mean High-Water Line, foreshore and offshore features are complete except for offlying shoal and sunken reef areas not discernible on the photographs. The approximate Mean Low-Water Line in the area of Gouldsboro Harbor and Grand Marsh Bay has not been identified on the field photographs. (See Side Heading No. 8, Mean Low-Water Line). The charting data for Mean Low-Water Line should become available during any future hydrographic survey.

3. INTERPRETATION OF THE PHOTOGRAPHS:

Sufficient notes have been made on the field photographs to enable the Compilation Office to augment the field interpretation by analogy where necessary.

4. HORIZONTAL CONTROL:

Two Horizontal Control Stations within the area of Survey No. T-8589 could not be found. The Horizontal Stations not recovered were "CROMER, 1861" and "GOULDSBOROUGH TWO STORY WHITE HOUSE, EAST CHIMNEY, 1861".

Form No. 526, Recovery Note, has been submitted for each of the Horizontal Control Stations within the area of the Survey.
Copy filed in Div. Photogrammetry General Files.

No new Horizontal Control Stations were established within the area of this Survey.

5. VERTICAL CONTROL:

No vertical control was recovered or identified within the area of this Survey.

6. DRAINAGE:

Drainage was not identified on the field photographs.

7. MEAN HIGH-WATER LINE:

All of the Mean High-Water Line was inspected from a dinghy kept close to the shore or by traversing on foot. Where the Mean High-Water Line could not be directly identified on the field photographs, reference measurements were taken or the distance estimated from some well-defined point.

Alongshore rocks, offshore rocks, and islets above the plane of Mean High-Water, revealed by photography, have been identified on the field photographs with the elevation above the plane of Mean High-Water noted.

8. MEAN LOW-WATER LINE:

The Mean Low-Water Line was inspected at or near Mean Low-Water whenever practicable. All of the Mean Low-Water Line from Bunker Cove to Jones Cove and including the area south, east and west of Hog Island, have been identified on the field photographs. The Mean Low-Water Line in the area of Gouldsboro Harbor and Grand Marsh Bay has not been identified on the field photographs.

The identification of the Mean Low-Water Line on the field photographs is very close to its true position, but is to be considered approximate.

9. WHARVES AND SHORELINE STRUCTURES:

All piers and other shoreline structures visible on the photographs, within the area of this Survey, have been identified on the field photographs.

10. DETAILS OFFSHORE FROM THE MEAN HIGH-WATER LINE:

Details outside the foreshore area, revealed by photography, include several rocks and rock ledge areas that uncover at Mean Low-Water or bare at Mean High-Water, grass-in-water areas, small rocky islets, large mud, sand and gravel areas, also several gravel, boulder, and ledge areas, and a fish trap.

The character of the foreshore area has been indicated on the field photographs. The extent to which several prominent rocks bare or uncover at

10. DETAILS OFFSHORE FROM THE MEAN HIGH-WATER LINE: (Cont'd.)

Mean Low-Water has been noted on the photographs (field). The height of each of the small islets above Mean High-Water has also been noted.

11. LANDMARKS AND AIDS TO NAVIGATION:

There are no Landmarks or Aids to Navigation within the limits of the Survey.

12. HYDROGRAPHIC CONTROL:

8 Recoverable Photo (Topographic) Stations. *524 cards on file in*
78 Temporary Photo (Topographic) Stations. *Div. Photogrammetry*
General Files.

Descriptions have been furnished.

14. ROAD CLASSIFICATION:

In accordance with the Army War College Circular, dated January 12, 1942, "Classification of Roads".

18. GEOGRAPHIC NAMES: 314 ✓

No investigation.

COMPILATION OFFICE
MAP MANUSCRIPT, SURVEY No. T-8589

COAST OF MAINE
FLANDERS BAY, GOULDSBORO HARBOR
Project No. CS-272

26. CONTROL:

The horizontal control in the area of the Map Manuscript for Survey No. T-8589 consists of eleven (11) stations. They are as follows:

Four Horizontal Control Stations falling within the limits of the Map Manuscript:

| <u>Name of Station</u> | <u>Type of Station</u> |
|---|------------------------|
| x c. CROMER, 1861 <i>Reported location 1934, not found in 1944.</i> | Triangulation |
| ✓ a. CROMER 2, 1934, r. 1944 | Triangulation |
| ✓ a. HOVEY 1860, r. 1934, r. 1944 | Triangulation |
| ✓ b. SQUARE HOUSE, SOUTH CHIMNEY, 1860 | Triangulation ✓ |

Seven Horizontal Control Stations falling just outside the limits of the Map Manuscript:

| | |
|--|---------------|
| a. BRIG, 1945 (d) | Theodolite |
| ae. BUMP, 1944 (d) | Theodolite |
| ab. GOULDSBOROUGH BAY, HEAD OF, W. CHY. OF HOUSE, 1861 | Triangulation |
| ✓ a. MOR, 1944 (d) | Theodolite |
| b. SMALL WHITE HOUSE WITH DARK ROOF, CHY. 1860 | Triangulation |
| ✓ SOUTH GOULDSBORO CHURCH SPIRE, 1934, r. 1944 | Triangulation |
| ✓ a. STAVE, 1944 (d) | Theodolite |

- a. Identified by a well-defined Substitute Station. The positions of these substitute stations have been shown on the Map Manuscript with very small black acid ink circles, accompanied by the note "Sub. Sta." *Removed from manuscript by reviewer.*
- b. Station identification doubtful.
- c. No recovery in 1944.
- e. Only sub station shown on Map Manuscript.

27. RADIAL PLOT:

The radial plot for the area of the Survey is part of a combined plot made with celluloid templates. Satisfactory results were obtained. See Radial Plot Report for Surveys Nos. T-8573 to T-8590, inclusive, T-8594 and T-8595, submitted June 5, 1945. Filed in Div. Photogrammetry General Files.

During the 1945 field inspection season, several new Theodolite Stations were established in the area of Project CS-272-F. Two of these new Theodolite Stations namely; "NICK, 1945" and "BRIG, 1945", are just east of the detail limits of Survey No. T-8589. These two stations were plotted on the margin of the Map Manuscript for Survey No. T-8589. A new radial plot for the areas of Surveys Nos. T-8589 and T-8588 was then run. The two new Theodolite Stations were "held to" in this Radial Plot.

After a few minor adjustments in the positions of some of the photograph centers and pass points on the eastern side of the surveys, it was found that Triangulation Stations GOULDSBOROUGH BAY, HEAD OF, WEST CHIMNEY OF HOUSE 1861, (Doubtful Recovery in 1944), and ROGERS POINT, WEST CHIMNEY OF HOUSE 1861, (Doubtful Recovery in 1944), could be "held to" either tangent or better.

28. DETAILED:

The horizontal (control) stations and horizontal pass points available for the compilation of this survey were adequate. The field data and the photographic coverage, however, were not adequate.

No field data were available for delineating the entire area of Jones Pond, Forbes Pond, Chicken Mill Pond, all drainage, several marsh and swamp areas, a probable dam, a small bridge, and the approximate Mean Low-Water Line in Grand Marsh Bay and Gouldsboro Harbor. Delineation of these features was made after careful office interpretation of the photographs.

The photographic coverage in the area of Jones Pond and Jones Cove and the western shore of Gouldsboro Harbor was inadequate due to insufficient side overlap resulting in many of the detail points being determined by the intersection of only two radials, some of which were very slim angle intersections. However, it is believed that these points are all within the required limits of accuracy.

Only the area in the vicinity of the shoreline was delineated, with the exception of Hog Island, the detail of which has been shown in its entirety.

30. MEAN HIGH-WATER LINE:

The Mean High-Water Line bordering along firm ground has been delineated in accordance with the field data. The shoreline bordering Jones Pond, several

30. MEAN HIGH WATER LINE: (Cont'd.)

small islets in Jones Pond, Forbes Pond, several streams feeding Forbes Pond, Chicken Mill Pond, and several small streams to the north of Gouldsboro Harbor, have been delineated in accordance with the interpretation of the photographs by the Compilation Office. The Mean High-Water/^{Line} is shown with a continuous heavy-weight black acid ink line.

The outer limits of marsh areas bordering along the Mean High-Water Line have been delineated in accordance with the field inspection data, and shown on the Map Manuscript with a full light-weight black acid ink line, except to the south of Grand Marsh Bay where the field data has indicated that the marsh line is very indefinite, and only the marsh and grass-in-water symbols are shown.

31. MEAN LOW-WATER LINE:

The approximate position of the Mean Low-Water Line was delineated in accordance with the field data and is shown with a dotted black acid ink line. The Mean Low-Water Line in Grand Marsh Bay and Gouldsboro Harbor was not shown because no field data were furnished the Compilation Office. Where the definite position of the Mean Low-Water Line was identified, it was shown with a light-weight dash and dot black acid ink line.

31-A. FORESHORE AREAS:

The foreshore areas shown consist of rock ledge, boulders, detached rocks, mud, gravel, sand, shells, marsh, and grass-in-water. Delineated in accordance with field data and with careful interpretation of the photographs by the Compilation Office.

31-B. SHOAL LINES:

The approximate outline of shoal areas was delineated in accordance with the Compilation Office interpretation of the photographs and is for the advance information of the Hydrographic Parties only. Shown with a long dash black acid ink line, accompanied by the note "Shoal". See review report.

31-C. REEF LINES:

The approximate outline of reef areas was delineated in accordance with the Compilation Office interpretation of the photographs and is for the advance information of the Hydrographic Parties only. Shown with a short dashed black acid ink line, accompanied by the note "Reef".

*The note "Reef" used
incorrectly removed from
manuscript and "Shoal Area"
substituted.*

31-D. MUD LINES:

The approximate outline of mud areas was delineated in accordance with the Compilation Office interpretation of the photographs and is for the advance information of the Hydrographic Parties only. Shown with a dotted black acid ink line, accompanied by the note "Approximate Mud Line".

32. DETAILS OFFSHORE FROM THE MEAN HIGH-WATER LINE:

The offshore details include rock ledge, boulders, rocks, shoals, sunken reefs, mud areas, a fish trap, and several islets, which have been shown in accordance with the field data and the interpretation of the photographs by the Compilation Office.

33. WHARVES AND SHORELINE STRUCTURES:

Several piers, cribbings, a stone dike, and a deteriorated earth and stone dike have been shown in accordance with the field data, accompanied by descriptive notes.

35. HYDROGRAPHIC CONTROL:

- ✓ 8 Recoverable Photo (Topographic) Stations - Located by radial plot.
- 78 Temporary Photo (Topographic) Stations - Located by radial plot.

A list of their descriptions is attached to this Report.
Form No. 524 has been submitted for the eight Recoverable Photo (Topographic) Stations. *Div. Photogrammetry General Files.*

37. BRIDGES:

One very small bridge has been shown at the north-western end of Gouldsboro Harbor above Gouldsboro. A structure has been delineated as a dam across a stream at the northern end of Gouldsboro Harbor at Chicken Mill Pond, according to the interpretation of the photographs by the Compilation Office.

38. GEOGRAPHIC NAMES: *414*

Taken from Nautical Charts Nos. 305 and 306 and the Bar Harbor, Maine, U. S. Geological Survey Quadrangle Map.

A list of the Geographic Names is attached to this Report. Approved
by L. Heck, Geographic
Names Section, Div. Charts

39. JUNCTIONS:

The junctions with Map Manuscripts, Surveys Nos. T-8583 and T-8582 to the west and Survey No. T-8588 to the south have been made and are in agreement.

The junction with Map Manuscript, Survey No. T-8590 to the north is an undetailed interior area.

The junction with Map Manuscript, Survey No. T-8647 to the east will be made when that Survey is compiled. Junction is in agreement.
K.H.M. 6/20/49

40. POSITION ACCURACY OF IMPORTANT PLANIMETRIC DETAILS:

Believed to be within 0.5 m.m.

41. RECOMMENDATIONS FOR FUTURE SURVEYS:

Map Manuscript, Survey No. T-8589, is complete with respect to all known details necessary for charting, except the charted features not definitely revealed by photography which should be investigated during the next Hydrographic Survey. These features have been noted in "Notes to Hydrographic Parties" attached to this report, and indicated on sections of Nautical Charts Nos. 305 and 306, attached to this Report.

44. COMPARISON WITH EXISTING TOPOGRAPHIC QUADRANGLES:

United States Geological Survey, Bar Harbor, Maine, Quadrangle, 15' series, scale 1:62,500, edition of 1942.

Details common to the Map Manuscript and to the quadrangle are, in general, in good agreement.

Major differences in shoreline as delineated on the Map Manuscript:

A marsh area and a stream along the northeastern shore of Gouldsboro Harbor.

A marsh area and a stream along the northern shore of Gouldsboro Harbor is shown as a sizable cove on the quadrangle.

Minor differences in land features are mentioned in the accompanying "Notes for Reviewer" and offshore features for which data were lacking, have been mentioned in the "Notes to the Hydrographic Party", attached to this Descriptive Report.

45. COMPARISON WITH NAUTICAL CHARTS:

Chart No. 305, Scale 1:40,000, published at Washington, D. C., March 1931, reissued May 1939, corrected to September 9, 1944. (Common area).

Details common to the Map Manuscript and to the Chart are, in general, in good agreement.

Major differences in shoreline as delineated on the Map Manuscript:

A marsh area and a stream along the northern shore of Gouldsboro Harbor is shown as grass-in-water in a sizable cove on the chart.

Two marsh areas along the northern shore of Gouldsboro Harbor are shown on the chart as grass-in-water.

Minor differences in land features are mentioned in the accompanying "Notes for Reviewer" and offshore features for which data were lacking, have been mentioned in the "Notes to the Hydrographic Party", attached to this Descriptive Report.

Chart No. 306, Scale 1:40,000, published at Washington, D. C., March 1944, corrected to April 7, 1945 (Common area).


Details common to the Map Manuscript and to the Chart are, in general, in good agreement.

Minor differences in land features are mentioned in the accompanying "Notes for Reviewer" and offshore features for which data were lacking, have been mentioned in the "Notes to the Hydrographic Party" attached to this Descriptive Report.


Respectfully Submitted:
March 22, 1946


Ruth M. Whitson,
Engineering Draftsman

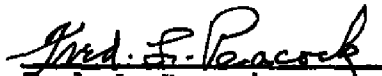
Map Manuscript and Descriptive
Report Reviewed By:


Raymond Glaser,
Engineering Draftsman

Compilation of Map Manuscript
Supervised By:


Harry R. Rudolph,
Photogrammetric Aid

Approved and Forwarded:
April 4, 1946


Fred. L. Peacock
Commander, U. & G. Survey
Officer-in-Charge,
Baltimore Photogrammetric Office

GEOGRAPHIC NAMES

(Undisputed)

- • Black Ledge ✓
- • Chicken Mill Pond Stream ✓
- • Flanders Bay ✓
- • Forbes Pond ✓
- • Gouldsboro (Village) ✓
- • Grand Marsh Bay ✓
- • Gaptill Point ✓
- • Hog Island ✓
- • Jones Cove ✓
- • Jones Pond ✓
- • Marsh Point ✓
- • Seal Ledge ✓
- • Stave Island Bar ✓
- • Taft Point ✓
- • Timber Cove ✓
- • West Gouldsboro (Village) ✓

- • Frenchman Bay (for title)

- • U.S. No. 1

- • Maine No. 186

- • " " 195

There has been no special
names investigation in
this area.

Names preceded by • are
approved, subject to check
by Field Edit. 8/26/48
L Heck

GEOGRAPHIC NAMES
(Disputed)

From Nautical Charts

From U. S. Geological Survey Bar
Harbor, Maine, Quadrangle

- * • Bunker Cove ✓ *see T-8588* Bunkers Cove
- ✓ • Gouldsboro Harbor *(use this name pending decision by U.S.B.N.)* West Bay
 ~~William Point~~ ✓ • Williams Point

West Bay is an old name, going back to 1878 or earlier, but Gouldsboro Harbor is usage on most maps.

* The area of Bunkers Cove ^(44°21' - 48°07') falls almost entirely within the area covered by survey T-8588.

1944
 IDENTIFICATION REPORT
 HORIZONTAL CONTROL
 MAP MANUSCRIPT, SURVEY No. T-8589
 Project No. CS-272-E

| <u>Station</u> | <u>U.S.G.S. Quadrangle</u> | <u>Recovery Date</u> | <u>Pricking Data</u> |
|---|--------------------------------|--------------------------|--------------------------|
| ** CROMER, 1861 | Bar Harbor | Not found | |
| * CROMER 2, 1934 | Bar Harbor | 10-12-44 | Positive |
| GOULDSBOROUGH TWO-STORY WHITE HOUSE EAST CHIMNEY, 1861 | Bar Harbor | Lost | |
| * HOVEY, 1860 | Bar Harbor | 10-12-44 | Positive |
| SQUARE HOUSE, SOUTH CHIMNEY, 1860 | Bar Harbor | 9-8-44 | Positive ✓ |

* Station identified by a substitute point. The positions of these substitute points have been shown on the Map Manuscript with very small black acid ink circles, accompanied by the note "Sub. Sta."

** Not used to control the radial plot.

NOTES
FOR
REVIEWER

COAST OF MAINE
MAP MANUSCRIPT, SURVEY No. T-8589
Project No. CS-272-E

All details have been shown with the usual symbols.

The small blue ink circles are the positions of well defined points determined photogrammetrically and are considered very strong. The small green ink circles are the positions of well-defined detail points determined by only two wide angle radials or by three or more very slim angle radials and are considered weak.

The 2½ millimeter black acid ink circles are the positions of Recoverable Photo (Topographic) Stations and of Temporary Photo (Topographic) Stations. Such circles accompanied by a name and date (1944 or 1945) are the positions of Recoverable Photo (Topographic) Stations and Theodolite Stations. All other such circles are the positions of the Temporary Photo (Topographic) Stations.

The very small black acid ink circles accompanied by the note "Sub.Sta." are the positions of Substitute Stations.

The photographs contain no appreciable tilt or differential distortion.

The scales of the photographs and the Map Manuscript are in good agreement.

The following discrepancies between the Map Manuscript and the United States Geological Survey, Bar Harbor, Maine, Quadrangle, were found:

Shown on the Map Manuscript but not on the Quadrangle

A number of bare rocks and boulders, and a great deal of rock ledge, marsh, mud, boulders, gravel and shell along the entire shoreline of the survey.

Several piers, piling, cribbing, dikes, and a fish-trap extending into the water.

Numerous buildings and minor roads.

Geographic names Black Ledge, Seal Ledge, and Stave Island Bar.

Shown on the Quadrangle but not on the Map Manuscript
because no data were available

Eight Bench Marks

Several buildings.

In disagreement with the Quadrangle

The geographic names, West Bay, Bunkers Cove, and Williams Point, are shown on the Map Manuscript as Gouldsboro Harbor, Bunker Cove, and William Point, respectively.

The water area appearing on the quadrangle along the northern shore of the main (unnamed) stream to the north of Gouldsboro Harbor is shown on the Map Manuscript as a marsh and grass area inshore from the Mean High-Water Line.

An indentation in the shoreline appearing on the quadrangle along the northeastern shore of Gouldsboro Harbor is shown on the Map Manuscript as a large marsh area. A stream has been delineated through the Marsh area.

A swamp area appearing on the quadrangle to the south of Grand Marsh Bay is shown on the Map Manuscript as a marsh and grass-in-water area.

Shown on the Map Manuscript but not Charted

The entire area of Jones Pond and the small islets within the Pond; Forbes Pond and two main tributaries leading through swamp area, within the limits of the Survey; the termination of the main stream north of Gouldsboro Harbor in Chicken Mill Pond and the delineation of the immediate vicinity.

Geographic names, ~~Chicken Mill Pond~~, Jones Pond, and Forbes Pond.

All buildings.

*Name deleted by Geog. Name Section
on name sheet (original) Filed in General Files
Photog. Div.*

A great deal of rock ledge, mud, boulders, gravel, and shell along the entire shoreline of the Survey.

Piers, cribbings, piling, and a dam in the vicinity of Jones Cove.

Several bare rocks in the vicinity of Hog Island.

Several bare rocks in the vicinity of Jones Cove.

Two bare rocks along the shoreline of the mainland opposite Stave Island Bar.

Marsh areas to the north, the northeast, and west of Gouldsboro Harbor.

Bare rocks in Grand Marsh Bay.

Bare rocks and boulders southwest of Timber Cove.

Bare rocks and boulders along the north, east, and west shores of Gouldsboro Harbor.

Fish-trap to the west of William Point in Gouldsboro Harbor

Large pier in Bunker Cove

Small pier just north of Bunker Cove

Charted but not shown on the Map Manuscript
because no data were available

A stream north of Bunker Cove

Rocks awash north of Bunker Cove

Rocks awash on Stave Island Bar

Rock awash to the northwest of Hog Island

Rocks awash south of William Point

Ledge northwest of Hog Island

Several small islets along the western shore of Grand Marsh Bay, south of a small marshy peninsula

A road through marshland just west of Grand Marsh Bay

A thoroughfare over a dike in the south of Grand Marsh Bay

In Disagreement with the Charts

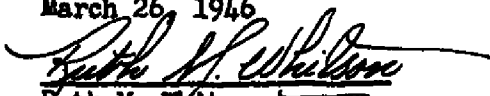
Marshy Islets appearing on Chart 305 to the south of Grand Marsh Bay have not been shown on the Map Manuscript. This area has been shown on the Map Manuscript as marsh and grass-in-water, in accordance with the field data.

Several grass-in-water areas appearing on Chart No. 305 along the northern shore of Gouldsboro Harbor have been shown as marsh areas on the Map Manuscript.

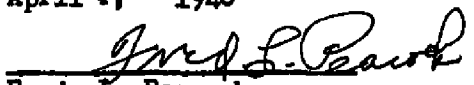
Rocks awash in the vicinity of Hog Island, Taft Point, Stave Island Bar, Bunker Cove, and Seal Ledge, have been shown on the Map Manuscript as rock ledge and boulders.

Respectfully Submitted:

March 26, 1946


Ruth M. Whitson
Engineering Draftsman

Approved and Forwarded:
April 4, 1946


Fred. L. Peacock
Chief of Party, C&G Survey
Officer in Charge
Baltimore Photogrammetric Office

Division of Photogrammetry
Review Report of
Planimetric Map Manuscript T-8589

Subject numbers not used in this report have been adequately covered in other parts of the descriptive report.

28. Delineating.-The delineation of detail ^{on} ~~from~~ this map manuscript, though compiled very neatly and accurately, contained an excessive amount of inkwork. A great number of leaders and descriptions of features, indicated properly by symbolization, were deleted. Substitute stations and recovery dates of triangulation stations were also removed.

31-A. Foreshore Areas.- A number of the elevations for rocks in the foreshore areas were removed. These elevations seldom exceeded one or two feet above M.H.W.

31-B. Shoal Lines.- Shoal lines in Flanders Bay, north of Steve Island Bar, were removed from the map manuscript. No indication of shoal areas is evident on the photographs.

43. Comparison with Previous Surveys:

| | | |
|----------|----------|---------|
| T - 891 | 1:10,000 | 1862,83 |
| T - 1039 | 1:10,000 | 1865,84 |

Common features on these surveys are superseded by the map manuscript.

44. Comparison with Existing Topographic Quadrangles:

Bar Harbor, Me., U.S.G.S., 1:62,500, 1934-35, 1939-40

45. Comparison with Nautical Charts:

| | | |
|---------------|----------|---------|
| Chart No. 305 | 1:40,000 | 6/22/46 |
| Chart No. 306 | 1:40,000 | 5/5/47 |

51. Application to Nautical Charts.- This map manuscript has not been applied to Charts 305 and 306.

Reviewed by:

K. N. Maki
K. N. Maki 9/1/48

APPROVED BY:

S. V. Griffith
S. V. Griffith *K. N. M.*
Chief, Review Section

A. J. Edmonston
Chief, Nautical Chart Branch
Division of Charts

K. T. Adams
Chief, Div. of Photogrammetry

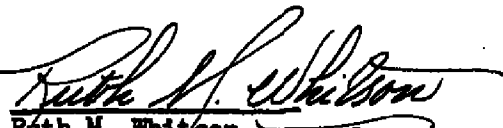
W. M. Sciffe
Chief, Div. of Coastal Surveys

COAST OF MAINE
PROJECT No. CS-272


DESCRIPTIONS OF THE RECOVERABLE PHOTO (TOPOGRAPHIC)
STATIONS AND TEMPORARY PHOTO (TOPOGRAPHIC) STATIONS FOR
THE AREA OF MAP MANUSCRIPT, SURVEY No. T-8589.

NUMBER OF RECOVERABLE PHOTO (TOPOGRAPHIC) STATIONS.....8
NUMBER OF TEMPORARY PHOTO (TOPOGRAPHIC) STATIONS.....78
TOTAL NUMBER OF STATIONS..... 86

LISTED BY:


Ruth M. Whitson
Engineering Draftsman

CHECKED BY:


Raymond Glaser
Engineering Draftsman

Low water, ratio prints were flown in May 1952 covering the
area in Flanders Bay from Stave Island south and some corrections
were made to the foreshore here.

David T. Romero
Ensign USC & GS

- 1126 - About 23' unblazed spruce about 10 meters north of tip of land. About 6 meters E. of M.H.W.L. About 20 meters N. of M.H.W.L.
- 1127 - Blazed 35' spruce tree at N. end of Timber Cove on M.H.W.L. On edge of brush line leaning to S. Blazed on S. side.
- 1128 - Point on highest of three boulders on M.H.W.L. N. of shoals overgrown with weeds by about 45 meters. About 90 meters NE of two large boulders about 20 meters S. of M.H.W.L.
- 1129 - About 30' spruce unblazed about 4 meters N of M.H.W.L. To the N of small cove. Tallest tree along the shoreline. About 15 meters of brown ledge rock boulders.
- 1130 - 8' unblazed spruce tree about 1 meter N.W. of M.H.W.L. About 4 meters S of bare place on side of hill. About 0.5 meters E. of brush line. Partially concealed by 5' birch.
- 1131 - About 15' unblazed pine tree about 1 meter E. of M.H.W.L. Sort of isolated on rock bluff.
- 1132 - 'BOLT, 1945' The station is a standard topographic disc on top of 5'x5' brown boulder about 3 meters NW of M.H.W.L., about 3 meters NE of top of brown spotted ledge rock boulder, about 7 meters NW of woods line and NW tip of grove of trees. Marsh grass to NW of marker until about 20 meters where there are ledge rocks awash at M.H.W. Located on eastern shore of Gouldsboro Harbor approximately 3/4 mile north of William Point. Elevation: 2 feet. Recoverable Photo (Topographic) Station.
- 1132½ - Blazed 30' spruce. About 20 meters N of M.H.W.L. over swamp. On W side of woods line, at E end of long row of piled stones, about 4 meters to SE, about 9 meters SE of S. tip of stagnant pond.
- 1133 - 20' twin spruce about 6 meters N. of M.H.W.L. and about 20 meters E of M.H.W.L. Only large spruce within 75 yards of point.
- 1134 - About 13' unblazed spruce about 8 meters E of M.H.W.L. About 4 meters S. of E end of rock wall. Stands alone about 2 meters E of grass line.
- 1135 - About 28' unblazed spruce about 50 meters W.-N.W. of M.H.W.L. About 60 meters E of 60' double pine, highest in vicinity. On edge of marsh line, on S edge of small clearing.
- 1136 - 8' unblazed spruce on M.H.W.L. on point of fast land. About 1 meter SE 6' stump. Smaller 2' high flat spruce growing on W. side.
- 1137 - White rock 8 meters W. of woods line, about 120 meters E. of M.H.W.L. and about 30 meters S. of M.H.W.L. Right on fast land.

- 1138 - About 20' unblazed spruce about 4 meters N. of M.H.W.L. between two dirt banks average about 5' above M.H.W. About 6' bush and tree stand about 2 meters S.
- 1139 - S. easternmost of two spruce (double). The other 10' and station 4'. About 25 meters SE of tip of ledge rock. About 4 meters NE of M.H.W.L. Blazed on S. side.
- 1140 - About 25' unblazed spruce. About 15 meters N of M.H.W.L. About 10 meters N of a dirt bluff about 5' high starting at M.H.W.L.
- 1141 - Large brown boulder about 30 meters S of M.H.W.L. and about 10 meters S of similar small boulder out 1' at M.H.W.L. About 15 meters S. of grass line at M.H.W.L.
- 1142 - About 35' blazed spruce about 2 meters E of M.H.W.L. and on W. side of small clearing indentation. Blazed on W. side very 'blue' spruce.
- 1143 - About 28' pine tree leaning slightly to W on M.H.W.L. About 20 meters S of black with brown topped boulder. Blazed on W side.
- 1144 - About 25' blazed blue spruce. About 20 meters NE where tide-water ends. About 8 meters SW down hill from 20' blue spruce. Blazed on S side.
- 1145 - 12' unblazed spruce about 25 meters W of M.H.W.L. On tip of grove of brush. About 20 meters of scraggly 10' pine tree.
- 1146 - 'BAKE, 1945'. Station is a standard topographic disc, on a grey rock about 18 m. N. of M.H.W.L. 27 meters N of E end of pier and 30 meters N-NE of W of pier. Rock about 4' long N to S and 38' wide and projects about 9 inches out of ground. About 12 meters W-NW of last birch (10' high) in line of birches in S end of grove of trees. Located on the northern shore of the main stream (unnamed) which empties into Gouldsboro Harbor. It is located approximately 1/2 mile southwest of Chicken Mill Pond. Elevation: 4 feet. Recoverable Photo (Topographic) Station.
- 1147 - About 28' evergreen. On edge of marsh line and fast land. About 30 meters W of M.H.W.L. in head of small cove.
- 1148 - Point on brown boulder on M. H.W.L. Only noticeable rock in vicinity. Sits between marsh grass and solid land. About 5' long E to W and 4' wide.
- 1149 - About 13' spruce about 10 meters W of M.H.W.L. About 4 meters SW of 30' hardwood tree. Partially hidden S by green bushes.
- 1150 - About 38' pine tree about 2 meters E of M.H.W.L. leaning

- slightly to W. another pine about 1 meter N. is about 20' high.
- 1151 - End of SE wing wall bridge support. Granite block about 1½' wide 2' high 4' long. Gray rocks piled up at base of support.
- 1152 - About 10' unblazed spruce about 8 meters W and 4 meters S of M.H.W.L. About 5 meters SW of top of large boulder.
- 1153 - 14' unblazed spruce about 1 meter W of M.H.W.L. and 4 meters S of M.H.W.L. On NE of grove of trees and brush. Dark grey ledge rock between tree and M.H.W.L.
- 1154 - About 25' blazed spruce about 15 meters E of M.H.W.L. Blazed on E side. About 2 meters NE of a 15' spruce. About 11 meters NE of 28' juniper.
- 1155 - Gray boulder about 7' long E to W 5' high, 6' wide. About 3 meters E of M.H.W.L. Surrounded by grass to S and rocks to NE and a few rocks to NE
- 1182 - 30' spruce tree on edge of tree line. About 14 meters S.W. of M.H.W. inshore from two 1 meter boulders on H.W.L. in Cove.
- 1222 - 'BILK, 1945' The station is a standard topographic disc on 3' gray boulder on M.H.W.L. 35 m. S of point of ledge. There is a large spruce tree about 35 m. N of the boulder. The boulder is just E. of a gravel pit. Only large gray boulder in vicinity. Located on the western shore of Bouldsboro Harbor approximately 1 mile north of Guptill Point.
Recoverable Photo (Topographic) Station.
- 1223 - About 6' alder bush about 3 meters N of M.H.W.L. About 2 meters SE of N tip of ledge rock and about 3 meters NW of tip of ledge rock. Brush and grain growing nearby.
- 1224 - Brown gray boulder about 2 meters long N to S and about 1 meter wide. About 10 meters S of M.H.W.L. In middle of mouth of small stream. About 7 meters S of slightly smaller brown boulder about 3 meters S of M.H.W.L. About 20 meters of quite large boulder on shore about 3 meters N. of M.H.W.L.
- 1225 - About 15' bushy spruce unblazed about 3 meters W. of M.H.W.L. About 3 meters N of northernmost of clump of 30' scraggly spruce. About 15 meters NW of top of ledge rock.
- 1226 - About 8' unblazed spruce about 15 meters W. of M.H.W.L. About 10 meters N and NW of M.H.W.L. Brush on NW side and grass on SE side.
- 1227 - 'BEND, 1945' Station is a standard topographic disc on 8' brown boulder. Largest in vicinity. On M.H.W.L. 8 m. from tree line, 180 m. S of ledge point and 100 m. N of another ledge point. There is a large spruce approximately 24 m. N of boulder. Located on the western shore of Bouldsboro Harbor approximately 150 m. south of Guptill Point.
Elevation: 6 feet Recoverable Photo (Topographic) Station.

- 1228 - 30' leaning spruce tree on tree line 70 m. S of large offshore boulder. There are two gray boulders just offshore from tree on M.H.W.L. Tree leans NE over beach.
- 1229 - 45' white pine tree. 5 m. from M.H.W.L. On storm H.W.L. 10' sloping hill behind it. There is a 3' gray boulder 10 meters to the NE. Tree is 2' diameter at base. Blazed on E side.
- 1230 - 50' white pine on N side of small horseshoe shaped cove. 60 m. S. of rock ledge pt. Tree is on edge of bank and 10 m. from M.H.W.L.
- 1231 - 50' spruce tree set in a group of small deciduous trees. 8 m. from M.H.W.L. There is a 3' gray boulder about 45 m. S of the tree.
- 1232 - 40' white pine tree 50 m. N of pt. of woods on edge of marsh line. Blazed on E. side.
- 1233 - Lone 25' double juniper on marsh line. Directly in line with built up place in mid.
- 1235 - S gable of one story gray shack. Shack has an extension on N and W sides. Chy. on W side of ridge.
- 1236 - 'BEST, 1945' Station is a standard topographic disc on SW pt. of ledge on edge of marsh line, 5 m S of a clump of dirt and grass on top of ledge. 13 m. west of overhanging spruce on sandy bank. On peninsula of land. Located on the eastern shore of Grand Marsh Bay approximately $1\frac{1}{2}$ miles south of Seal Ledge. Elevation:- 2' above M.H.W.L. Recoverable Photo (Topographic) Station.
- 1237 - 30' spruce tree on edge of wood line on storm H.W.L. Blazed on W side.
- 1238 - 35' spruce tree on N side of cord wood pile. There is a slide for lumber approximately 15 m. to the SW. About 35 m. S of a small cove and about 10 m. from M.H.W.L. There is a 45' white pine to the N.
- 1239 - 15' spruce tree on 3' bank 3 m. off M.H.W.L. About 10 m. SE of point. There is an overhanging spruce approximately 12 m. N of station. Blazed W. side.
- 1240 - Overhanging 25' spruce, most of roots are uncovered. There is a 6' bank just E of tree. A large gray boulder lies 15 m. to the S. Blazed on W side.
- 1241 - 30' spruce tree. Most of the bottom branches are bare, 30 m. S. of point. 2 m. W of 7' bank and 3 m. from M.H.W.L. Blazed on W. side.

- 1242 - 'BODE, 1945' Station is a standard Topographic disc on 4' round gray boulder on M.H.W.L. 5 m. W of 4' bank. There is a small clearing on the bank immediately inshore from the boulder. There is an overhanging spruce 8 m. to the N.E. two other gray boulders lie on the M.H.W.L. to the south approximately 15 m. and 40 m. away. Located on the eastern shore of Grand Marsh Bay on Marsh Point. Recoverable Photo (Topographic) Station.
- 1854 - Black smoke stack on end of building
- 1855 - West gable of small shack
- 1856 - Evergreen
- 1857 - Evergreen
- 1858 - Evergreen
- 1859 - Evergreen
- 1860 - Evergreen
- 1861 - Evergreen
- 1862 - Evergreen
- 1863 - West Gable of boat house
- 1864 - East gable of house
- 1865 - Northwest gable of shack
- 1866 - Evergreen
- 1867 - Large evergreen
- 1868 - Evergreen
- 1877 - Evergreen
- 1878 - Evergreen
- 1879 - Evergreen
- 1880 - Evergreen
- 1881 - Evergreen
- 1882 - South corner of cement pier foundation
- 1883 - Small evergreen
- 1883 $\frac{1}{2}$ - Large boulder 2' above M.H.W.
- 1884 $\frac{1}{2}$ - Boulder $\frac{1}{2}$ ' above M.H.W.

1885 $\frac{1}{2}$ Boulder $\frac{1}{2}$ ' above M.H.W.

- 2453 - 'CHIMNEY, 1944' The station is a red, square brick chy., highest on house. House white weather board with dark brown trim. House 1 $\frac{1}{2}$ story. House has 3 brick chimneys, one on each of the larger sections. Main section of house is nearest road. Chy. top is covered and smoke comes out through sides of very top. Located approximately 300 meters inshore on the western shore of the main land opposite Stave Island Bar.
Elevation: 140 feet. Recoverable Photo (Topographic) Station.
- 2454 - W. Gouldsboro Union Church Steeple with wind vane at top. Top of steeple is shingled and belfry part is boarded up. Church is light gray weather board, white trim, light green windows on stone foundation. West gable of church is shingled front. About center of steeple, half way up is circular colored glass window. Elevation: 110'.
- 2455 - 50' evergreen leaning offshore
- 2456 - N. gatepost 6" dia. 5' tall
- 2457 - 20' evergreen on point
- 2458 - 35' evergreen at ent. to small brook.
- 2459 - 'CHIMNEY, 1944' The station is the S. Br. Chy, on large yellow shingled house, green shutters, white trim, 5 dormers on west side of house. Located on the eastern shore of Flanders Bay at Taft Point.
Elevation: 100 feet. Recoverable Photo (Topographic) Station.
- 2465 - Center of white granite boulder
- 2466 - Center of small, isolated clump of brush.

NOTES
For
HYDROGRAPHIC PARTIES

COAST OF MAINE
MAP MANUSCRIPT, SURVEY No. T-8589

Project No. CS-272 E

The 2½ millimeter black acid ink circles are the positions of the selected hydrographic control stations. Two copies of the Descriptive List have been furnished for your use.

The outline of shoal and sunken reef areas shown are approximate and for your advance information only. They are shown with long dashed and short dashed black acid ink lines, respectively.

The dotted acid ink line is the approximate position of the Mean Low-Water Line.

The very small acid ink circles, accompanied by "Sub.Sta." are the positions of substitute stations. A brief description of the substitute stations may be found on the pricking cards, Form No. M-982-1, submitted to the Washington Office.

The following charted features were not definitely revealed by photography and should be investigated during the next hydrographic survey:

Several rocks awash in the vicinity of Bunker Cove, Stave Island Bar, Hog Island, and William Point.

Several small islets along the western shore of Grand Marsh Bay.

Ledge N.W. of Hog Island.

Note: For location, see sections of Charts Nos. 305 and 306 attached to this report. These features have been indicated on the section of charts by a red ink line around the area in which they fall.

The following charted features are in disagreement with the Map Manuscript as delineated in accordance with field data and should also be investigated:
Several grass-in-water areas along the northern shore of Gouldsboro Harbor.

Several marshy islets south of dike located in the southern part of Grand Marsh Bay.

Rocks awash in vicinity of Hog Island, Taft Point, Stave Island Bar, Bunker Cove, and Seal Ledge.

Note: For location, see sections of Charts Nos. 305 and 306. These features have been indicated by a green ink line around the area in which they fall.

Respectfully submitted:

March 22, 1946



Ruth M. Whitson
Engineering Draftsman

Approved and Forwarded:
April 4, 1946.



Fred. L. Peacock
Chief of Party, C. & G. Survey
Officer in Charge
Baltimore Photogrammetric Office

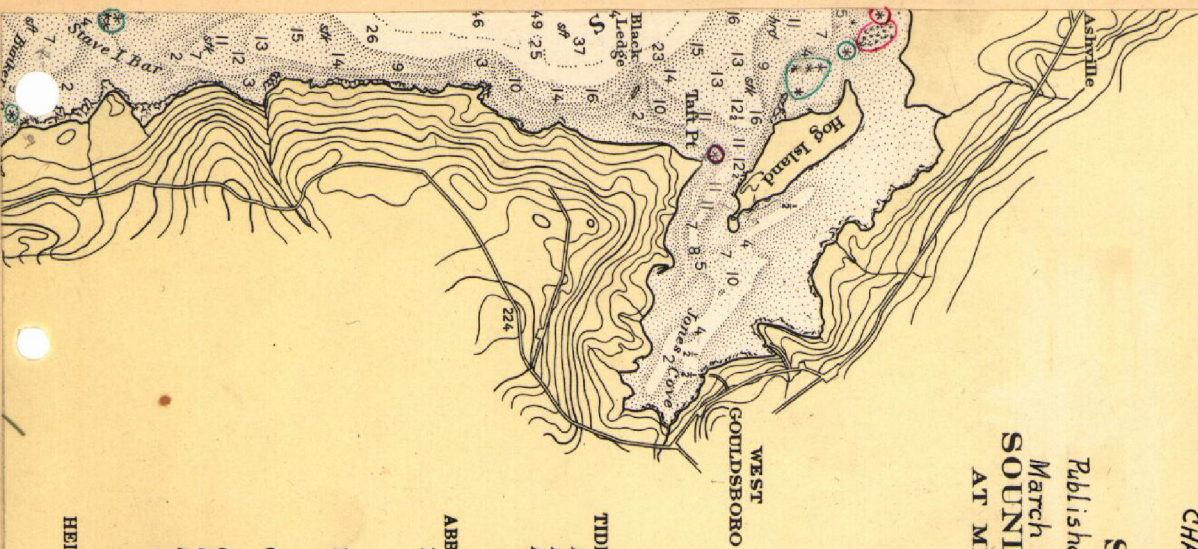
MT. DESERT ISLAND

CHART NO. 306

Scale $\frac{1}{40000}$

Published at Washington, D.C.

March 1944, corrected to April 7, 1945
SOUNDINGS IN FEET
AT MEAN LOW WATER



Local Magnetic Attraction
Deviations of as much as 1° less than the normal compass variation have been observed in the area of Frenchman Bay north of a line approximately through Bar Harbor and Winter Harbor.

TIDES (referred to mean low water)

| | Winter Harbor | Bar Harbor | Salisbury Cove | Sullivan |
|----------------------------|---------------|------------|----------------|----------|
| Mean high water | 10.3 ft | 10.5 ft | 10.6 ft | 10.5 ft |
| Mean sea level | 5.2 ft | 5.2 ft | 5.3 ft | 5.2 ft |
| Lowest tide to be expected | -4.0 ft | -4.0 ft | -4.0 ft | -4.0 ft |

ABBREVIATIONS

- Lights: F. fixed; FL. flashing; Qk. quick; I. Qk. interrupted quick; S.L. Occ. occulting; Alt. alternating; Gp. group; W. white; R. red; m. miles; min. minutes; sec. seconds; ev. every; vis. visibility; SEC. sector; OBS. obscured; AERO. aeronautical light.
- Buoys: C. can; N. nun; S. spar; REF. reflector; Day beacons: Δ (Lights, buoys and beacons are white unless otherwise indicated.)
- C.G. Coast Guard Station; R.T. radio tower.
- Cl. clay; Co. coral; G. gravel; Gr. grass; M. mud; Rk. rock; S. sand; bk. black; br. brown; bu. blue; gm. green; gu. gray; rd. red; wh. white; hrd. hard; rhy. rocky; sft. soft; stk. sticky; P. D. position doubtful; E. D. existence doubtful; Obsr. obstruction.

HEIGHTS in feet above mean high water:

30'

CHART NO. 305

Scale 1:40,000, Published at Washington, D.C., March 1931, reissued May 1939, corrected to Sept. 9, 1944.

