

# 8578

Diag'd. on Diag. Ch. No. 1202

Form 504

U. S. COAST AND GEODETIC SURVEY

DEPARTMENT OF COMMERCE

## DESCRIPTIVE REPORT

Type of Survey Planimetric Air Photo.  
(SHORELINE)

Field No. CS272-2 Office No. T-8578

### LOCALITY

State Maine

General locality Vicinity of Frenchman Bay

Locality Sullivan River, Skillings River,  
Hills Cove, Youngs Bay, Egypt Bay,  
Partridge Cove and Kilkenny Cove

1944-'45

CHIEF OF PARTY

D.E. Sturmer

LIBRARY & ARCHIVES

DATE June 2 - 1949

B-1870-1 (1)

# 8578

DATA RECORD

Form T-1

T-8578

Quadrangle (II):

Project No. (II): CS-272-E

Field Office:

Chief of Party: *Dale E. Sturmer*  
~~Fred. L. Peacock~~

Air Photographic Party No. 2

Compilation Office:

Chief of Party: Fred. L. Peacock

Baltimore Photogrammetric Office

Instructions dated (II III):

Copy filed in Descriptive  
Report No. T- (VI)  
*Div. Photogram. Office Files*

April 1, 1942 (Additional)

July 10, 1943 (Horizontal Control Requirements)

March 18, April 11, & July 17, 1944 (Supplemental)

August 10, 1944 (Additional)- August 26, 1944 (Amendment to Additional Instructions)

Completed survey received in office;

*2 Oct 1945*

Reported to Nautical Chart Section;

Reviewed: *1/6/47*

Applied to chart No. 1202

Date: *2/14/46 (Examined)*

Redrafting Completed; *Sept. 1947*

Registered: *1 Mar. 1948*

Published; *Shoreline (vault copy only)*

Compilation Scale: 1:10,000

~~Published Scale: 1:10000~~

Scale Factor (III): 1:000

Geographic Datum (III): N. A. 1927

Datum Plane (III): *M, H, L*

Reference Station (III): SPRINGER, 1865, r. 1944

Lat.: 44° 32' 02.64" -81.5 m. Long.: 68° 17' 41.10" -907.5 m. Adjusted

~~Unadjusted~~

State Plane Coordinates (VI): *East Zone*

X =

Y =

Military Grid Zone (VI)



STATISTICS (III)

Land Area (Sq. Statute Miles); 5

Shoreline (More than 200 meters to opposite shore); 23 Stat. miles

Shoreline (Less than 200 meters to opposite shore); 8 Stat. miles

Number of Recoverable Topographic Stations established; \*9

Number of Temporary Hydrographic Stations located by radial plot; 120

Leveling (to control contours) - miles;

Roman numerals indicate whether the item is to be entered by,

(II) Field Party, (III) Compilation Party, or, (VI) the Washington Office.

When entering names of personnel on this record give the surname

and initials (not initials only).

Remarks: \* Two of these are also Bench Marks.



FIELD REPORT  
SURVEY No. T-8578

COAST OF MAINE  
VICINITY OF FRENCHMAN'S BAY  
PROJECT No. CS-272-E

1. DESCRIPTION OF THE AREA:

According to Instructions, dated August 10, 1944, the Map Drawing for Survey No. T-8578 is a shoreline survey.

Survey No. T-8578 covers an area from Sullivan river to Kilkenny Cove including Youngs bay, Mills Cove, Old Pond, portions of Egypt Bay, Skillings River, Partridge Cove, and a few small islands and offshore ledge areas.

The terrain immediately adjacent to the mean High-Water Line is, in general, very rocky except for the area in the upper reaches of Old Pond. The foreshore area is commonly ledge rock with sand, mud, and scattered boulders in the deeper coves.

The interior is mostly tree covered and mountainous. There are a few clear and cultivated areas. A single track railroad traverses the area covered by this Map Drawing. Two villages, namely: Hancock and South Hancock fall within the area.

2. COMPLETENESS OF FIELD INSPECTION:

The identification of the horizontal control is complete except as noted under Side heading No. 4, "Horizontal Control" of this report.

The identification of the Mean High-Water Line, foreshore and offshore features are complete. No sunken reef or off-lying shoal areas for the area of the survey have been identified on the photographs and the approximate Mean Low-Water Line was not fully delineated because it was considered impractical to do so. The charting data for these features will become available during contemplated hydrography.

3. INTERPRETATION OF THE PHOTOGRAPHS:

Sufficient notes have been made on the field photographs to enable the Compilation Office to augment the field interpretation by analogy where necessary.

4. HORIZONTAL CONTROL:

One triangulation station within the area of Survey No. 1-8578 could not be found because it is in a heavily wooded area. Two triangulation stations were completely lost and a third was lost for triangulation purposes but its identification is believed to be sufficiently accurate for air photographic control. Three temporary horizontal control stations were located by traverse. All other horizontal control stations within the area of this Survey were recovered and identified as positive or good.

Form No. 526, Recovery Note, has been submitted for each of the control stations recovered within the area of the Survey.

5. VERTICAL CONTROL:

Bench Marks "D-93 1942" and "E-93 1942" were recovered and positively identified on the field photographs. No other vertical control was recovered within the area of the survey.

Form No. 685, Report on Condition of Bench Mark, has been submitted for each of these control stations.

6. DRAINAGE:

All perennial and intermittent drainage within the area of the survey has been interpreted and delineated on the field photographs.

7. MEAN HIGH-WATER LINE:

All of the Mean High-Water Line was inspected from a dinghy kept close to the shore or by traversing on foot. Where the mean high-water line could not be directly identified on the field photographs, reference measurements were taken or the distance estimated from some well-defined picture reference image.

Along shore rocks, and offshore rocks and islets above the plane of mean high-water revealed by photography, have been identified on the field photographs with elevations above the plane of mean high-water noted.

8. MEAN LOW-WATER LINE:

The Mean Low-Water Line was inspected at or near mean low-water whenever practical and identified on the field photographs. Where the mean low-water line is some distance offshore and out on mud or sand flats, only a casual inspection was made as it was impractical to measure out to it. In such areas, no delineation was made. The identification of the Mean Low-Water Line on the field photographs is very close to its true position but is to be considered approximate.



9. WHARVES AND SHORELINE STRUCTURES:

All of the shoreline structures visible on the photographs within the area of the survey have been identified on the field photographs.

10. DETAILS OFFSHORE FROM THE MEAN HIGH-WATER LINE:

The detail offshore from the Mean High-Water Line includes rock ledge, small islets, rocks that bare or are awash at Mean High-Water, and grass-in-water.

The character of the foreshore area has been indicated on the field photographs. The extent to which several prominent rocks bare at Mean High-Water or uncover at Mean Low-Water has been noted on the photographs.

The height of most of the small islets above Mean High-Water within the area of the survey has been noted.

11. LANDMARKS AND AIDS TO NAVIGATION:

No previously charted or desirable uncharted Landmarks or Fixed Aids to Navigation fall within the limits of the survey. There are no floating aids to navigation within the area of the survey.

12. HYDROGRAPHIC CONTROL:

9 Recoverable Topographic Stations (two of which are Bench Marks). *fm. 524*  
120 Temporary Hydrographic Stations.

Descriptions have been furnished.

14. ROAD CLASSIFICATION:

In accordance with the Army War College Circular, dated January 12, 1942, "Classification of Roads".

18. GEOGRAPHIC NAMES: *814*

No investigation.

COMPILATION REPORT  
MAP DRAWING, SURVEY No. T-8578

COAST OF MAINE  
FRENCHMANS BAY, SULLIVAN RIVER, SKILLINGS RIVER,  
AND KILKENNY COVE  
Project No. CS-272-E

26. CONTROL:

The horizontal control in the area of the Map Drawing for Survey No. T-8578 consists of eight stations. They are as follows:

Seven within the detail limits:

<u>Name of Station</u>	<u>Established by</u>	<u>Type of Station</u>
FOUNDATION, 1879 (No recovery in 1944)	U.S.C. & G.S.	Triangulation
HANCOCK UNION CHURCH SPIRE, 1879, partial recovery, 1944	U.S.C. & G.S. <i>Removed from manuscript. Field Inspection reported station lost for triangulation 10/18/46</i>	Triangulation (Intersection)
*HUB 7A, 1945	U.S.C. & G.S.	Traverse (Temporary new)
*HUB 5, 1945	U.S.C. & G.S.	Traverse (Temporary new)
*HUB 15, 1945	U.S.C. & G.S.	Traverse (Temporary new)
*ISLAND, 1879, r. 1944	U.S.C. & G.S.	Triangulation
*SPRINGER, 1865, r. 1944	U.S.C. & G.S.	Triangulation

One just outside the detail limits:

**CRABTREE NECK BAPTIST CHURCH CHIMNEY, 1865	U.S.C. & G.S.	Triangulation (Intersection)
--	---------------	------------------------------

\* Station identified by a well defined picture point connected to station by a short traverse. The positions of these substitute points have been shown on the Map Drawing with very small black acid ink circles, accompanied by the letters "F.I.P"

\*\* Station identified by the Compilation office and held to in the radial plot.

27. RADIAL PLOT:

The radial plot for the area of the survey is part of a combined plot made with celluloid templates. Satisfactory results were obtained. See Radial Plot Report for Surveys Nos. T-8573 to T-8590, inclusive, T-8594 and T-8595, submitted June 5, 1945.



28. DETAILED:

The field data, horizontal control, and radially plotted control points available for the compilation, were adequate. In several areas the photographic coverage was inadequate due to insufficient side overlap resulting in many of the detail points being determined by the intersection of only two radials, some of which were very slim angle intersections. However, it is believed that these points are all within the required limits of accuracy.

For the most part, only the area in the vicinity of the shoreline was detailed. However a portion of the village of Hancock was also detailed.

29. MEAN HIGH-WATER LINE:

The Mean High-Water Line bordering along firm ground has been detailed in accordance with the field data and shown with a continuous heavy-weight black acid ink line.

30. MEAN LOW WATER LINE:

The approximate position of the Mean Low-Water Line identified by the field Unit was detailed in accordance with the field data and shown with a dotted black acid ink line.

31-A. FORESHORE AREAS:

The foreshore areas shown on the Map Drawing consist of rock ledge, boulders, detached rocks, grass-in-water, mud, sand, and gravel areas, all of which have been detailed in accordance with the field data.

31-B. SHOAL LINES:

The approximate limits of shoal areas was detailed in accordance with the Compilation Office interpretation of the photographs and is for the advance information of the hydrographic Parties only. Shown with a long dashed black acid ink line, accompanied by the note "Shoal".

31-C. REEF LINES:

The approximate outline of reef areas was detailed in accordance with the Compilation Office interpretation of the photographs and is for the advance information of the hydrographic Parties only. Shown with a short dashed black acid ink line, accompanied by the note "Reef".



32. DETAILS OFFSHORE FROM THE MEAN HIGH-WATER LINE:

The offshore details include rock ledge, boulders, rocks, shoals, sunken reefs, and islets. Except for the shoal and sunken reef areas, all of these details shown are in accordance with the field data.

33. WHARVES AND SHORELINE STRUCTURES:

Several cribbings, two piers, two lobster pounds, and an abandoned marine way have been shown in accordance with the field data.

35. HYDROGRAPHIC CONTROL:

9 Recoverable Topographic Stations - Located by radial plot.  
120 Temporary Hydrographic Stations - Located by radial plot.

*Includes:  
BM D-93  
E-93*

A list of their descriptions is attached to this report.

Form No. 524 is being submitted for the nine Recoverable Topographic Stations.

37. BRIDGES:

Two small highway bridges and one railroad bridge was detailed in accordance with the field inspection data. Only the length and width of the two highway bridges and only the vertical clearance of the railroad bridge were furnished. One other small highway bridge over Spring Brook was detailed in accordance with the Compilation Office interpretation of the photographs.

38. GEOGRAPHIC NAMES: *214*

Taken from Nautical Charts Nos. 1202 and 306 and from United States Geological Survey, Ellsworth, Maine, and Tunk Lake, Maine, Quadrangle Maps.

A list of the Geographic Names is attached to this report. *(approved by Geog. Div. Sect.)*

39. JUNCTIONS:

The junction with Map Drawing, Survey No. T-8577 to the south and Survey No. T-8581 to the east have been made and are in agreement.

The junction with Map Drawing, Survey No. T-8582 to the east is an undetailed interior area.

The junction with Map Drawing, Surveys Nos. T-8564 to the west and T-8579 to the north will be made when those surveys are compiled. *Pone*



40. POSITION ACCURACY OF IMPORTANT PLANIMETRIC DETAILS:

Believed to be within 0.5 m.m.

41. RECOMMENDATIONS FOR FUTURE SURVEYS:

Map Drawing, Survey No. T-8578 is complete with respect to all known details necessary for charting, except the charted features not definitely revealed by photography, which should be investigated during contemplated hydrography. These features have been noted in "Notes to Hydrographic Parties" attached to this report, and indicated on sections of Nautical Charts Nos. 306 and 1202 attached to this report.

44. COMPARISONS WITH EXISTING TOPOGRAPHIC QUADRANGLES:

United States Geological Survey, Ellsworth, Maine, Quadrangle, 15' series, scale 1:62,500, edition of June 1911, reprinted 1941.

United States Geological Survey, Tunk Lake, Maine, Quadrangle, 15' series, scale 1:62,500, edition of 1932, reprinted 1939.

In general, details common to the Map Drawing and the Quadrangles are in good agreement. Minor differences in land features are mentioned in the accompanying Notes to the Reviewer, and offshore features for which detailing data were lacking have been mentioned in the Notes to the Hydrographic Party.

45. COMPARISON WITH NAUTICAL CHARTS:

Chart No. 1202, scale 1:80,000, published at Washington, D. C., May 1932, reissued December 1938, corrected to April 13, 1944 (common area).

Chart No. 306, scale 1:40,000, published at Washington, D. C., March 1942, corrected to July 5, 1945, (common area).

In general, details common to the Map Drawing and the Charts are in good agreement. Minor differences between the above mentioned charts and the map Drawing in land features are mentioned in the accompanying Notes to the Reviewer, and offshore features for which detailing data were lacking, have been mentioned in the accompanying Notes to the Hydrographic Party.

The Map Drawing for Survey No. T-8578 was compiled under the supervision of Harry R. Rudolph, Photogrammetric Aid; reviewed by Albert C. Rauck, Jr., Photogrammetric Aid.

Respectfully Submitted,  
September 24, 1945

Florence M. Hammond  
Florence M. Hammond  
Photogrammetric Aid

Albert C. Rauck, Jr.,  
Photogrammetric Aid

and

Harry R. Rudolph  
Harry R. Rudolph,  
Photogrammetric Aid

Approved and Forwarded:  
October 2, 1945

Fred. L. Peacock  
Fred. L. Peacock  
Chief of Party, U. & G. Survey  
Officer-in-Charge,  
Baltimore Photogrammetric Office



GEOGRAPHIC NAMES

(Undisputed)

Taken from Nautical Charts Nos. 306 and 1202 and from United States Geological Survey 15' Quadrangles, Ellsworth, Maine, and Tunk Lake, Maine.

- Burying Island
- Cedar Point
- Crabtree Neck
- Egypt Bay
- Great Ledge
- Hancock
- Hills Cove
- Hyde Point
- Kilkenny Cove
- Kilkenny Stream
- Maine Central Railroad
- Old Pond
- Partridge Cove
- Seal Point
- Skillings River
- Spring Brook
- Sullivan River
- Youngs Bay
- Youngs Point
- Stewart Island
- Long Point
- U.S. No. 1
- Maine Central
- Mill Stream
- Youngs Island
- State No. 182

Names preceded by • are  
approved. L. Heck  
9/16/47

GEOGRAPHIC NAMES

GEOGRAPHIC NAMES

(Disputed)

Chart No. 1202

U. S. Geological Survey Ellsworth  
Quadrangle

• North Hancock •

Franklin Road North Hancock ~~POST~~

• Franklin Road } to be applied separately  
as on manuscript. Neither  
is now a P.O.

1944  
 IDENTIFICATION REPORT  
 HORIZONTAL CONTROL  
 MAP DRAWING, SURVEY No. T-8578  
 Project No. GS-272

<u>Station</u>	<u>U.S.G.S. Quadrangle</u>	<u>Recovery Date</u>	<u>Pricking Data</u>
CLINE'S BARN, EAST GABLE, 1879	Ellsworth	Lost	
FOUNDATION, 1879	Ellsworth	Not Found	
HANCOCK UNION CHURCH SPIRE, 1879	Ellsworth	*Lost	Positive
ISLAND, 1879	Ellsworth	9-21-44	Positive
MERCHANTS', H, BARN, NORTH GABLE, 1865	Ellsworth	Lost	
SPRINGER, 1865	Ellsworth	9-8-44	Positive

\* See pricking card for explanation.

**NOTES  
FOR  
REVIEWER**

**COAST OF MAINE  
MAP DRAWING, SURVEY No. T-8585  
Project No. CS-272-E**

All details have been shown with the usual symbols.

The small blue ink circles are the positions of well defined picture points determined by the radial plot and considered very strong. The small green ink circles are the positions of well defined picture points determined by only two wide angle radials or three or more very slim angle radials and are considered weak.

The large blue ink circles are the very strong positions of the photograph centers determined by the radial plot.

The  $2\frac{1}{2}$  millimeter black acid ink circles are the positions of the Recoverable Topographic Stations and Temporary Hydrographic Stations, with the exception of three temporary traverse stations which were used to control the radial plot. The three temporary traverse stations are accompanied by the note "HUB 5, etc." The Recoverable Topographic Stations determined by the radial plot are accompanied by a name and date (1944). All other such circles are the positions of the Temporary Hydrographic Stations determined by the radial plot.

The very small black acid ink circles are the positions of well defined picture points identified and located by ground survey methods by the Field Unit to substitute for triangulation stations in controlling the radial plot. These circles are accompanied by the letters "F.I.P."

The photographs contain no appreciable tilt or differential distortion.

The scales of the photographs and the Map Drawing were in fair agreement. It was not necessary to use the vertical projector.

The following disagreements between the Map Drawing and United States Geological Survey Maps and U. S. Coast and Geodetic Survey Nautical Charts were found:

United States Geological Survey, Ellsworth, Maine, Quadrangle, 15' series, scale 1:62,500, edition of June 1911, reprinted 1941.

A pier and some abandoned marine ways in the cove just east of Great Ledge, a destroyed pier in the small cove at the east of Youngs Bay, two lobster pounds and two cribbings on the southern shore of Youngs Point, two roads on the land just west of Partridge Cove, a road in the village of Hancock, a trail on Hyde Point, two trails on the

peninsula south of the village of North Hancock, a new road in the vicinity of North Hancock, a trail along the northern shore of a small cove at the east of Youngs Bay, and two roads on Youngs Point, have been shown on the Map Drawing but do not appear on the Quadrangle. More intermittent drainage has been shown on the Map Drawing than appears on the Quadrangle.

The Mean High-Water Line of most of the inlets within the area of the survey are in disagreement with its position on the Quadrangle.

United States Geological Survey, Tunk Lake, Maine, Quadrangle, 15' series, scale 1:62,500, edition of 1932, reprinted 1939. (Common area).

Three cribbings on the northeastern shore of Sullivan River east of Cedar Point have been shown on the Map Drawing but do not appear on the Quadrangle.

Chart No. 1202, scale 1:80,000, published at Washington, D. C., May 1932, reissued December 1938, corrected to April 13, 1944 (common area).

Chart No. 306, scale 1:40,000, published at Washington, D. C., March 1942, corrected to July 5, 1945, (common area).

The Mean High-Water Line of most of the inlets within the area of the survey are in disagreement with its position on the charts.

More roads and trails have been shown on the Map Drawing than appear on the charts.

Several buildings have been shown on the Map Drawing. No buildings appear on the charts.

The areas of grass-in-water, marshy ponds, and grass land shown on the Map Drawing in the vicinity of Old Pond, appears as a marsh area on Chart No. 306. a No marsh area or grass-in-water area appears on Chart No. 1202 in that vicinity.

The geographic names Spring brook and Kilkenny Stream which have been shown on the Map Drawing do not appear on either chart.

The geographic names Hyde Point, Youngs Point, Seal Point, Cedar Point, Hills Cove, Old Pond, and Great Ledge, shown on the Map Drawing do not appear on Chart No. 1202. 814

Respectfully Submitted:  
September 24, 1945

*Florence M. Hammond*  
Florence M. Hammond  
Photogrammetric Aid

Approved and forwarded:  
~~September 23, 1945~~ Oct. 2, 1945

*Fred. L. Peacock*  
Fred. L. Peacock  
Chief of Party, C. & G. Survey  
officer-in-Charge,  
Baltimore Photogrammetric office

Division of Photogrammetry  
Review Report of  
Topographic Map Manuscript T-8578

Paragraph numbers not used in this review report have been adequately covered in other parts of the Descriptive Report.

26 Control

Hub 9, 7a, and 15 on the traverse between Springer 1935, and CH 12, 1942 (USCG) which were used to control the N.W. corner of this sheet have been removed from the manuscript. They are all temporary stations, and no descriptions for them were submitted.

28 Detailing

Copy number 1 of field photograph H. C. 1218 could not be found. This photograph contained all field inspection data for the north shore of Cold Bay west of the railroad fill which crosses it, all of Hills Cove, and Hyde Point westward and northward to a point approximately 150 meters north of recoverable topographic station "Chimney", 1944 (1), number 2091.

30 Comparison with Previous Topographic Surveys

T-1187	1/10,000	1977-79	T-1492	1/10,000	1830
1491	1/10,000	1879			

The present survey supersedes the old surveys in common areas for common detail.

31 Comparison with Existing Quadrangles

U.S.G.S.	ELLMPTA	1/62,500	ed 1911, rev 1941, Eng. 1942
U.S.G.S.	FLUK LAKE	1/62,500	ed 1932, rev 1939, Eng. 1942

Comparison between the quadrangles and T-8578 is adequately covered in "Notes to Reviewers". All discrepancies noted were verified and no additional discrepancies were found.

35 Comparison with Nautical Charts Nos. 306 and 1202

T-8678 was partially applied to the charts prior to review. A few rocks inside the low water line have been deleted during review, but they were so close to Mean High Water line that they are not important to the charts. Minor changes occur in cultural and shoreline details.

Reviewed by:

Under the direction of:

*H. W. Tauxe*

H. W. Tauxe  
Photogrammetrist 1/6/47

*S. V. Griffith*

Chief, Review Section F. W. M.

Approved by:

B. G. Jones  
Technical Assistant to the  
Chief, Div. of Photogrammetry

A. Edmonston  
Chief, Nautical Chart Branch  
Division of Charts

K. T. Adams  
Chief, Div. of Photogrammetry

W. M. Scaife  
Chief, Div. of Coastal Surveys

# NAUTICAL CHARTS BRANCH

SURVEY NO. 78578

## Record of Application to Charts

DATE	CHART	CARTOGRAPHER	REMARKS
2/14/46	1202	Riccardi	<del>Before</del> After Verification and Review <i>Exam. for critical information only.</i>
11/22/50	307	"	" " " " <i>Fully appl. No correction.</i>
6/6/62	307 <i>Rev</i>	M. Rogusa	<del>Before</del> After Verification and Review <i>than overlap with chart 306 Revs and in conjunction with T-11390</i>
			<del>Before</del> After Verification and Review
			<del>Before</del> After Verification and Review
			<del>Before</del> After Verification and Review
			<del>Before</del> After Verification and Review
			<del>Before</del> After Verification and Review
			<del>Before</del> After Verification and Review
			<del>Before</del> After Verification and Review
			<del>Before</del> After Verification and Review
			<del>Before</del> After Verification and Review
			<del>Before</del> After Verification and Review
			<del>Before</del> After Verification and Review
			<del>Before</del> After Verification and Review
			<del>Before</del> After Verification and Review
			<del>Before</del> After Verification and Review
			<del>Before</del> After Verification and Review
			<del>Before</del> After Verification and Review
			<del>Before</del> After Verification and Review
			<del>Before</del> After Verification and Review
			<del>Before</del> After Verification and Review
			<del>Before</del> After Verification and Review

A basic hydrographic or topographic survey supersedes all information of like nature on the uncorrected chart. Give reasons for deviations, if any, from recommendations made under "Comparison with Charts" in the Review.



COAST OF MAINE  
PROJECT No. CS-272-E

DESCRIPTIONS OF THE RECOVERABLE TOPOGRAPHIC  
STATIONS AND TEMPORARY HYDROGRAPHIC STATIONS FOR  
THE AREA OF MAP DRAWING, SURVEY No. T-8578

NUMBER OF RECOVERABLE TOPOGRAPHIC STATIONS..... 9  
NUMBER OF TEMPORARY HYDROGRAPHIC STATIONS.....120  
TOTAL NUMBER OF STATIONS.....129

Listed By: Florence M. Hammond  
Florence M. Hammond  
Photogrammetric Aid

Checked By: Albert C. Hauck, Jr.,  
Photogrammetric Aid

- 1894 . Evergreen.
- 1894A . Evergreen.
- 1895 . Southeast corner of cribbing.
- 1896 . Evergreen.
- 1897 . Evergreen.
- 1898 . Very large evergreen.
- 1899 . Evergreen.
- 1900 . Evergreen.
- 1901 . Evergreen.
- 1902 . Evergreen.
- 1903 . Evergreen.
- 1904 . Evergreen.
- 1945 . Large evergreen.
- 1946 . Large evergreen.
- 1947 . Evergreen.
- 1948 . Northwest corner of large boulder.
- 1949 . Evergreen.
- 1950 . Evergreen.
- 1951 . Evergreen.
- 1952 . Evergreen, crooked.
- 1953 . Evergreen.
- 1954 . Center of black ledge.
- 1955 . Evergreen.
- 1956 . Northwest gable of house.

- 1957 · <sup>Chimney</sup> "BRICK CHIMNEY, LOG CABIN" - Station is the brick chimney on a brown log cabin (logs vertical), red and green trim, one-story, three other sections of house attached to cabin. All sections are one-story. Station is approximately 30 meters southwest of the Mean High-Water Line of Sullivan River. Recoverable topographic Station. ✓
- 2030 · Stiff leg derick.
- 2031 · Evergreen.
- 2032 · Evergreen on point.
- 2033 · Evergreen.
- 2034 · Evergreen, large.
- 2035 · Evergreen.
- 2036 · Evergreen.
- 2037 · Evergreen.
- 2038 · Evergreen.
- 2039 · Evergreen.
- 2040 · Evergreen.
- 2041 · Southeast gable of shed.
- 2044 · Evergreen.
- 2045 · Evergreen.
- 2046 · Evergreen.
- 2047 · Evergreen.
- 2048 · Evergreen.
- 2049 · <sup>Chimney</sup> "RED BRICK CHIMNEY, ONE-STORY BUILDING" - Station is a red brick chimney approximately on the center of a one-story building. Building is covered with tar paper and stands about 10 meters west of small creek and about 15 meters north of the Mean High-Water Line. Recoverable Topographic Station. ✓
- 2050 · Evergreen.
- 2051 · Evergreen.



- 2052 <sup>Ledge</sup> "TOP OF LEDGE" - Station is the top of a large chunk of ledge which comes to a peak on top. Ledge forms the point of a small peninsula located at the southern extremity of Kilkenny Cove. Recoverable Topographic Station.
- 2053 · Evergreen.
- 2054 · Evergreen.
- 2055 · Evergreen.
- 2056 · Evergreen.
- 2057 · Evergreen.
- 2058 · Evergreen.
- 2059 · Evergreen.
- 2060 · Evergreen.
- 2061 · Evergreen.
- 2062 · Evergreen.
- 2063 · Evergreen.
- 2064 · Evergreen.
- 2065 · Evergreen.
- 2066 <sup>Chimney</sup> "WHITE CHIMNEY, WHITE HOUSE" - Station is a white chimney in the center of the highest part of a white house with green roof. House is approximately 120 meters north of the Mean High-Water Line. Recoverable Topographic Station.
- 2067 · Evergreen.
- 2068 · Evergreen. *Destroyed*
- 2069 · Evergreen.
- 2070 · Evergreen.
- 2071 · Evergreen.
- 2072 · Evergreen.
- 2073 · Evergreen.
- 2074 · Evergreen.

- 2075 . Evergreen.
- 2076 . Evergreen.
- 2077 . Evergreen.
- 2078 . Evergreen.
- 2079 . Evergreen.
- 2080 . Evergreen.
- 2081 . Evergreen.
- 2082 . Evergreen.
- 2083 . Evergreen.
- 2084 . Evergreen.
- 2085 . Evergreen.
- 2086 . Evergreen.
- 2087 . Evergreen.
- 2088 . Evergreen.
- 2089 . Evergreen.
- 2090 . Evergreen.
- 2091 . Evergreen.
- 2092 . Evergreen.
- 2093 . Evergreen.
- 2094 . Evergreen.
- 2095 . Evergreen.
- 2096 . Evergreen.
- 2097 . Largest evergreen on island.
- 2098 . Evergreen.
- 2099 . Evergreen.
- 2100 . Evergreen.
- 2101 . Evergreen.



2102 · Evergreen.

2103 · Evergreen.

2104 · Evergreen.

2105 · Evergreen.

2106 · Evergreen.

2112 · Evergreen.

2113 · Evergreen.

2114 · Evergreen.

2115 · Evergreen.

2116 · Evergreen.

2117 · Evergreen.

2118 · Evergreen.

2119 · Evergreen.

2120 · Evergreen.

2121 · Evergreen.

2122 · Evergreen.

2123 · Evergreen.

2124 · <sup>Abutment</sup> "SOUTHWEST CORNER BRIDGE ABUTMENT" - Station is the southwest corner of the railroad bridge abutment. Bridge runs across Old Pond and is approximately 1/2 mile west of Hancock. Recoverable Topographic Station.

2125 · Evergreen.

2126 · Evergreen.

2127 · Evergreen.

2128 · Evergreen.

2129 · Evergreen.

2130 · Evergreen.

2131 · Evergreen.

2132 · Evergreen.



2133 · Evergreen.

2462 · <sup>Gable</sup> "SOUTHEAST GABLE, SHINGLED HOUSE" - Station is the southeast gable of a  $1\frac{1}{2}$  story house. House is approximately 20 meters north of the Mean High-Water Line and 1/2 mile northeast of the mouth of Spring Brook. Recoverable Topographic Station. ✓

2463 · Cupola on top and center of red tar paper, shingled barn with yellow trimming and black roof. (S. of Kilkenny Cove)

2578 · 6' evergreen. S. bank Sullivan River, NE of Hancock.

2597 · <sup>Gable</sup> "NORTHEAST GABLE, ONE-STORY HOUSE" - Station is the northeast gable of a one-story grey shingled house with green shingled roof and two white chimneys. House is located about 20 meters southwest of the road. There is a small orchard on both sides of the road around the house. Recoverable Topographic Station. Inland from Seal Point ✓

2603 · X Westerly of two 20' evergreens.

"BENCH MARK No. D-93" - Bench Mark No. D-93 is approximately 1.2 mile north of N. Sullivan P. O., in a field on the east side of the highway leading to East Franklin. Field elevation 71.027. Recoverable Topographic Station.

"BENCH MARK No. E-93" - Bench Mark No. E-93 is approximately 0.3 mile north of N. Sullivan P. O., in a field north of a road fork, and east of the highway leading East Franklin. Field elevation 63.465'. Recoverable Topographic Station. ✓

The following charted features are in disagreement with the map Drawing as detailed in accordance with the field data, and should also be investigated:

Two rocks awash between the peninsula and the northeastern side of Burying Island. Rock awash at the entrance of the small cove at the mainland, east of Burying Island. The road bridging the Mean High-Water Line where Kilkenny Stream flows into Kilkenny Cove. The Maine Central Railroad bridging Old Pond. Two rocks awash east of Hyde Point, in Youngs Bay. The lobster pounds at the cove at Youngs Point. Ledge area off the west shore of Skillings River. Three rocks awash and a rock which bares, in the Skillings River, southeast of Seal Point. Ledge area off the mainland, southeast of the small island in Kilkenny Cove. Four rocks awash at Great Ledge. Nine rocks awash and a ledge area in Partridge Cove, west of Seal Point.

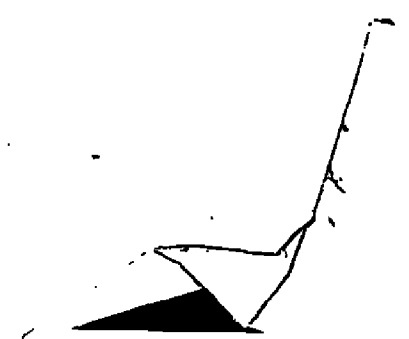
NOTE: For location, see the above mentioned sections of Charts. These features have been indicated by a green line around the areas in which they fall.

Respectfully Submitted  
September 24, 1945

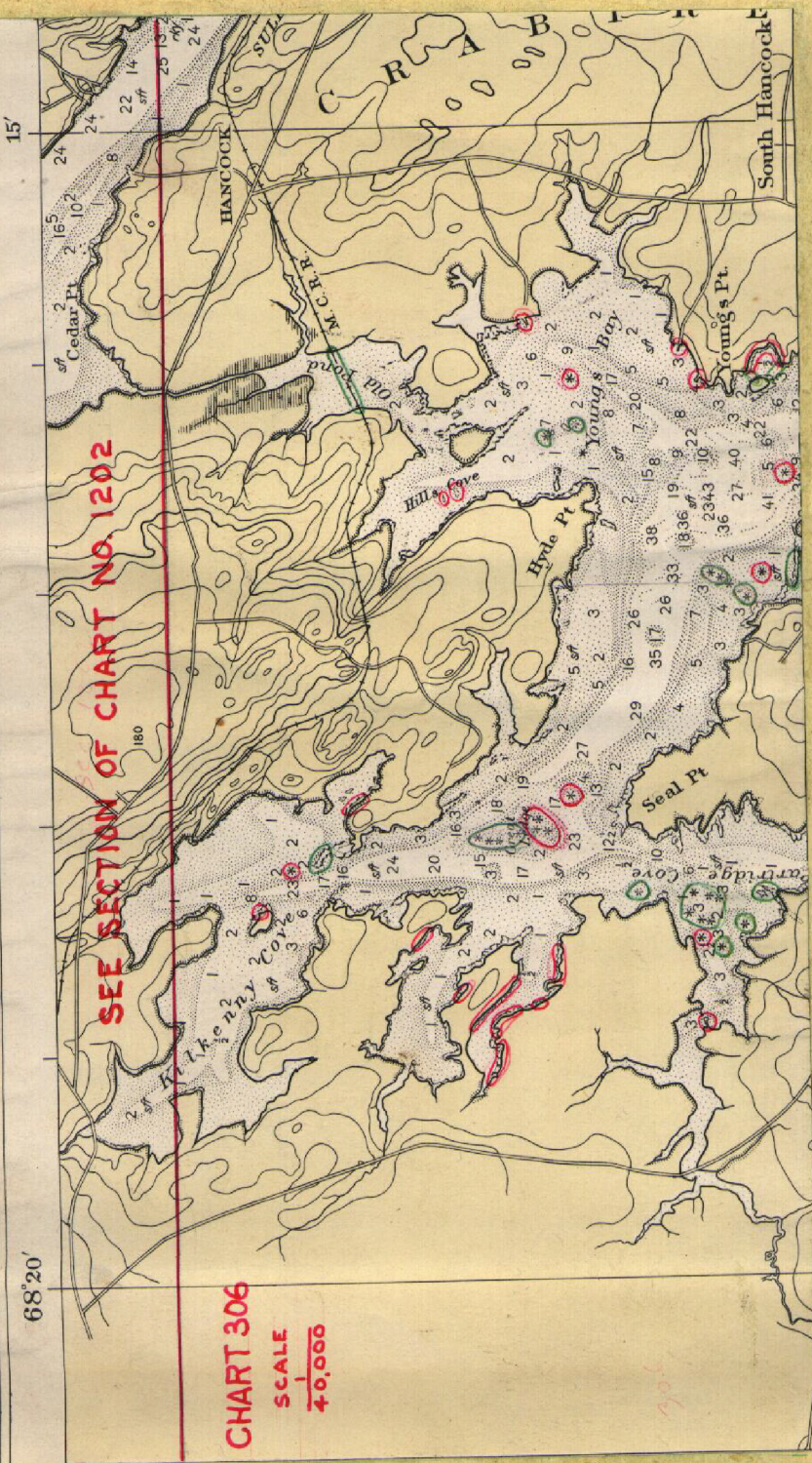
*Florence M. Hammond*  
Florence M. Hammond  
Photogrammetric Aid

Approved and Forwarded:  
~~September 29, 1945~~  
October 2, 1945

*Fred. L. Peacock*  
Fred. L. Peacock  
Chief of Party, C. & G. Survey  
Officer-in-Charge,  
Baltimore Photogrammetric Office







SEE SECTION OF CHART NO. 1202

CHART 306  
SCALE  
1/40,000

15'

68°20'

HANCOCK  
Cedar Pt.  
Hill's Pt.  
Seal Pt.  
Young's Pt.  
South Hancock

165  
102  
22  
14  
25  
13  
24

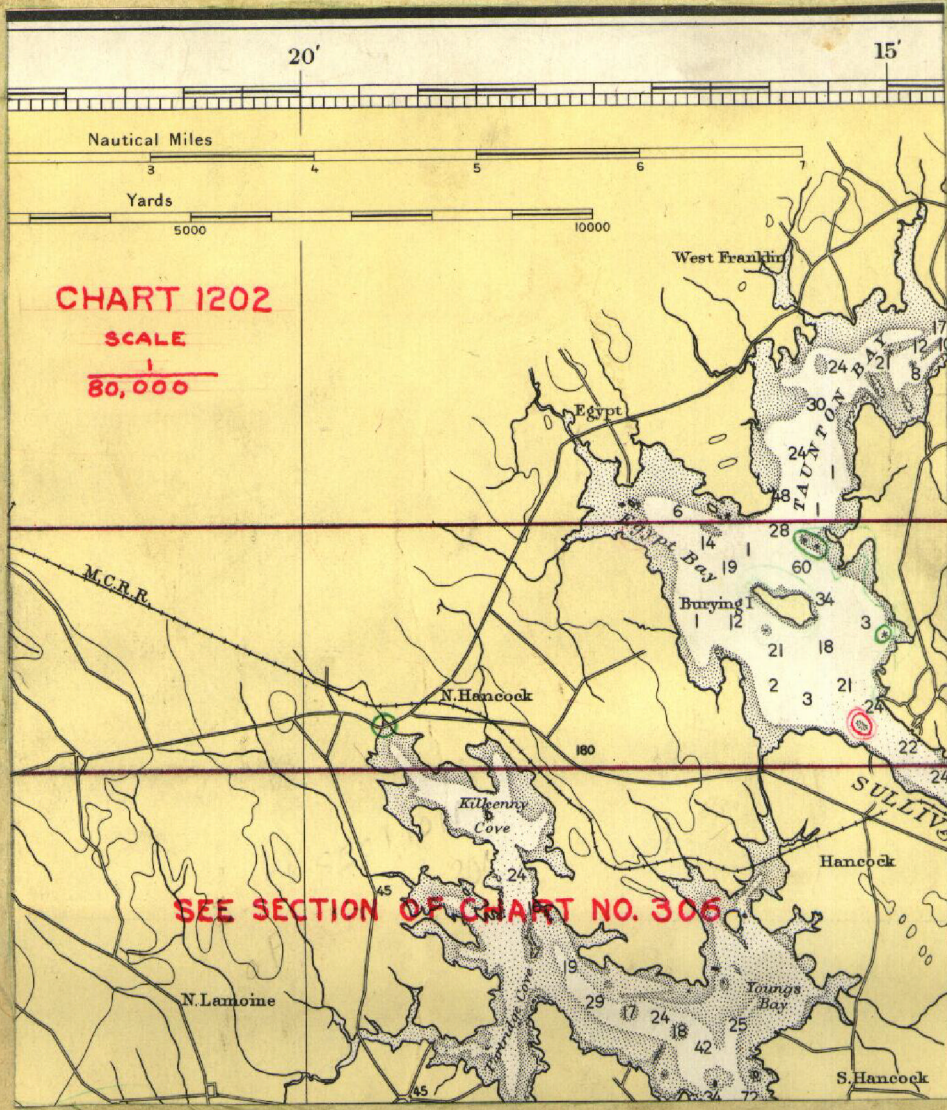
180  
2  
3  
4  
5  
6  
7  
8  
9  
10  
11  
12  
13  
14  
15  
16  
17  
18  
19  
20  
21  
22  
23  
24  
25  
26  
27  
28  
29  
30  
31  
32  
33  
34  
35  
36  
37  
38  
39  
40  
41  
42  
43  
44  
45  
46  
47  
48  
49  
50  
51  
52  
53  
54  
55  
56  
57  
58  
59  
60  
61  
62  
63  
64  
65  
66  
67  
68  
69  
70  
71  
72  
73  
74  
75  
76  
77  
78  
79  
80  
81  
82  
83  
84  
85  
86  
87  
88  
89  
90  
91  
92  
93  
94  
95  
96  
97  
98  
99  
100

2  
3  
4  
5  
6  
7  
8  
9  
10  
11  
12  
13  
14  
15  
16  
17  
18  
19  
20  
21  
22  
23  
24  
25  
26  
27  
28  
29  
30  
31  
32  
33  
34  
35  
36  
37  
38  
39  
40  
41  
42  
43  
44  
45  
46  
47  
48  
49  
50  
51  
52  
53  
54  
55  
56  
57  
58  
59  
60  
61  
62  
63  
64  
65  
66  
67  
68  
69  
70  
71  
72  
73  
74  
75  
76  
77  
78  
79  
80  
81  
82  
83  
84  
85  
86  
87  
88  
89  
90  
91  
92  
93  
94  
95  
96  
97  
98  
99  
100

2  
3  
4  
5  
6  
7  
8  
9  
10  
11  
12  
13  
14  
15  
16  
17  
18  
19  
20  
21  
22  
23  
24  
25  
26  
27  
28  
29  
30  
31  
32  
33  
34  
35  
36  
37  
38  
39  
40  
41  
42  
43  
44  
45  
46  
47  
48  
49  
50  
51  
52  
53  
54  
55  
56  
57  
58  
59  
60  
61  
62  
63  
64  
65  
66  
67  
68  
69  
70  
71  
72  
73  
74  
75  
76  
77  
78  
79  
80  
81  
82  
83  
84  
85  
86  
87  
88  
89  
90  
91  
92  
93  
94  
95  
96  
97  
98  
99  
100

2  
3  
4  
5  
6  
7  
8  
9  
10  
11  
12  
13  
14  
15  
16  
17  
18  
19  
20  
21  
22  
23  
24  
25  
26  
27  
28  
29  
30  
31  
32  
33  
34  
35  
36  
37  
38  
39  
40  
41  
42  
43  
44  
45  
46  
47  
48  
49  
50  
51  
52  
53  
54  
55  
56  
57  
58  
59  
60  
61  
62  
63  
64  
65  
66  
67  
68  
69  
70  
71  
72  
73  
74  
75  
76  
77  
78  
79  
80  
81  
82  
83  
84  
85  
86  
87  
88  
89  
90  
91  
92  
93  
94  
95  
96  
97  
98  
99  
100





SEE SECTION OF CHART NO. 306



NOTES  
FOR  
HYDROGRAPHIC PARTIES

COAST OF MAINE  
MAP DRAWING, SURVEY No. T-8578  
Project No. US-272-E

The  $2\frac{1}{2}$  millimeter ink circles are the positions of the selected hydrographic control stations. Two copies of the Descriptive List have been furnished for your use.

The outline of shoal and sunken reef areas shown are approximate and are for your advance information only. They are shown with long dashed and short dashed ink lines, respectively.

Only that portion of the Mean Low-Water Line identified by the Field Unit has been shown on the Map Drawing.

The dotted ink line is an approximate position of the mean Low-Water Line.

The very small ink circles, accompanied by the letters "F.I.P." are the positions of well defined picture points located by ground survey methods as substitutes for triangulation stations used to control the radial plot. A brief description of the "F.I.P.'s" may be found on the pricking cards, Form No. M-982-1, submitted to the Washington Office.

In general, more ledge areas, rocks awash, and rocks that uncover, are shown on the Map Drawing than appear in the common area on the charts.

The following charted features were not definitely revealed by photography and should be investigated during contemplated hydrography:

A small prominent shoal area off the northeast shore of Cedar Point. Two small ledge areas lying in Mills Cove. Three piers, jetties, or bulkheads along the eastern shore of Youngs Bay. Three rocks awash in the Skillings River and Youngs Bay. Four rocks awash in the vicinity of Great Ledge. A rock awash southeast of the small island lying in Milkenny Cove. A rock awash and a small pier or bulkhead in the vicinity of Partridge Cove. Ledge areas in the cove at Youngs Point, in the cove southeast of Milkenny Cove, on the east side of the small island in Milkenny Cove, and in the two coves west of Great Ledge.

NOTE: For location, see sections of Charts Nos. 306 and 1202 attached to this report. These features have been indicated on the sections of charts by a red ink line around the areas in which they fall.