

8111

Form 504

U. S. COAST AND GEODETIC SURVEY

DEPARTMENT OF COMMERCE

DESCRIPTIVE REPORT

Type of Survey: Air Photographic Topographic

Field No. 12 Office No. T-8111

LOCALITY

State Maryland

General locality Chesapeake Bay (Western Shore)

Locality Cove Point, Maryland

1943

CHIEF OF PARTY
F. L. Gallen
Fred. L. Peacock

LIBRARY & ARCHIVES

DATE October 2, 1944

DATA RECORD

T-8111

Quadrangle (II):

Cove Point $7\frac{1}{2}$ min. Quadrangle

~~Drum Point 15 min. Quadrangle~~

Field Office:

Salisbury, Md.

Compilation Office:

Baltimore Field Office

Instructions dated (II III):

March 4, 27, June 5, 24,)
August 13, September 4,) 1942

August 13, September 4, 1942

Project No. (II):

CS-278-A

Chief of Party:

Wm. D. Patterson

F. L. Gallen

F. L. Gallen
Chief of Party:

Comdr. Fred. L. Peacock

Copy filed in Descriptive
Report No. T- (VI)

Completed survey received in office: - February 24, 1943

Reported to Nautical Chart Section: February 25, 1943

Reviewed: 5-1-43 Applied to chart No. Date:

Redrafting Completed: 6/23/93

Registered: *September 30, 1946* Published: *February 4, 1944*

Compilation Scale:

$$1:20,000 \times 1.0079 = 1:20,158$$

Scale Factor (III):

.99216

Published Scale: 1:31,680

Geographic Datum (III): N.A. 1927 Datum Plane (III): Mean Sea Level

Reference Station (III): Rekar, 1942

38° 24' 19.746" 608.8m

76° 26' 43.513" 1055.8m

Lat.: $38^{\circ} 24' 19.732''$ 608.4m
(1241.6)

~~(1241.6)~~

Long.: $76^{\circ} 26' 43.521''$ 1056.0

$$(-399.8)$$

Adjusted
~~Unadjusted~~

State Plane Coordinates (VI):

~~Not computed~~

X =

Y =

Military Grid Zone (VI) "A"

PHOTOGRAPHS (III)

<u>Number</u>	<u>Date</u>	<u>Time</u>	<u>Scale</u>	<u>Stage of Tide</u>
<u>Nine lens</u>				
8922 - 8924 Inc.	4/15/42	2:09 to 2:12p.m.	1:20,000	1.0' above M. L. W.
8927 - 8928	4/15/42	2:24 to 2:25p.m.	1:20,000	1.0' above M. L. W.
8938	4/15/42	2:47p.m.	1:20,000	0.95' above M.L.W.
<u>Single Lens</u>				
AHS 10-50 to AHS 10-54	unknown	unknown	1:20,000	unknown
AHS 10-58 to AHS 10-62	unknown	unknown	1:20,000	unknown
AHS 10-102	unknown	unknown	1:20,000	unknown

Tide from (III): Tables of Predicted tides, reference station Baltimore, Md.,
with time correction for Cove Point, Md.

Mean Range:

Spring Range:

1.2'

1.4'

Camera: (Kind or source) U. S. Coast & Geodetic Survey, nine lens camera;
(focal length $8\frac{1}{4}$ "). 9" x 9" Single lens contact prints obtained from Soil
Conservation Service, U. S. Dept. of Agriculture.

Field Inspection by: Hor. Control: S. C. Dionisio date: July, 1942

Shoreline: J.C. Lajoie; D.B. Hancock July, 1942

Field Edit by: Cultural Features: T. A. Walker July-Nov. 1942
date: March, 1943

Date of Mean High-Water Line Location (III):

Same as date of nine lens photographs

Projection and Grids ruled by (III) W.C.B. date: Sept., 1942

" " " checked by: Washington Office date: Sept., 1942

Control plotted by: Joseph Steinberg date: Nov. 4, 1942

Control checked by: J. Edward Deal, Jr. date: Nov. 5, 1942

Radial Plot by: J. Edward Deal, Jr., & Joseph Steinberg date: Nov. 7, 1942

Detailed by: Edward H. Snyder (contouring) date: Nov.-Dec., 1942
Contours February, 1943

Reviewed in compilation office by: Wm. H. VanLoon date: 1/16-2/5/43

Elevations on Field Edit Sheet
checked by: L.G. Chambers date: 3/23/43

STATISTICS (III)

Land Area (Sq. Statute Miles): 25.0 sq. Statute Miles

Shoreline (More than 200 meters to opposite shore): 19.0 Statute Miles

Shoreline (Less than 200 meters to opposite shore): 10.0 Statute Miles

Number of Recoverable Topographic Stations established: 35

Number of Temporary Hydrographic Stations located by radial plot:

 two Statute
Leveling (to control contours) /- miles: 26.5

Roman numerals indicate whether the item is to be entered by, (II) Field Party, (III) Compilation Party, or, (VI) the Washington Office.

When entering names of personnel on this record give the surname and initials (not initials only).

Remarks: Contours by T. H. Walker, July - November, 1942

FIELD INSPECTION REPORT
QUADRANGLE T-8111
F. L. Gallen, Chief of Party

1. DESCRIPTION OF AREA - This quadrangle covers part of a peninsula lying between the Chesapeake Bay and the Patuxent River, a tidal stream, with Saint Leonard Creek, an arm of the Patuxent River, separating part of the western edge of the quadrangle from the remainder of the area. The drainage is mainly into Saint Leonard Creek and in places streams heading less than 100 yards from Chesapeake Bay drain to the above creek. Steep slopes and bluffs of varying heights are found adjacent to all shorelines and the entire area is extensively cut-up by stream valleys (See Report for T-8114 for character of streams and valleys) with rolling or flat-topped ridges between the valleys. There are innumerable small gulleys, many of which were probably formed due to poor farming methods years ago. About 15% of the land is cleared and farmed and many of the ridge tops now covered with timber and brush show evidence of farming in prior years. The maximum elevation is about 130 feet and is found near the Chesapeake Bay.

The timber growth ranges from moderate to dense, with much brush, and many pine woods are dense enough to impede visibility and foot passage. Pine trees predominate at the higher elevations and deciduous trees at the lower elevations. Flat stream bottoms at low elevations are frequently covered with dense brush.

There is a sand beach along the Chesapeake Bay shoreline and small areas of marsh are found in back of portions of this beach and along some of the lower portions of the streams.

2. COMPLETENESS OF FIELD INSPECTION - The field inspection is complete on all items except for the addition of State Highway numbers and the names of several local roads.
3. INTERPRETATION OF PHOTOGRAPHS - The photographs are typical for areas of this type.
4. HORIZONTAL CONTROL - Same as for T-8143.
5. VERTICAL CONTROL - Same as for T-8143.
No errors were found in level elevations.
6. CONTOURS AND DRAINAGE - Same as for T-8143

Where possible planetable traverses were run along roads and trails due to the limited visibility in wooded areas and these traverses were supplemented by hand level traverses controlled by pacing from located points. Additional control for these hand level traverses was obtained by using a tracing on acetate of the area to be sketched showing features which could be identified on the photographs. The contours

sketched on the acetate were later transferred to the photograph. By this method two men with hand level and acetate could sketch out a small area while the other two men proceeded with the plane-table.

The streams were drawn in under a stereoscope in the Mechanicsville office and were checked in the field. Most locations were within satisfactory limits except where drawn too far up at the heads or where misplaced in wide flat bottoms. The streams were checked by planetable traverses and shots up and down streams from the set-up. It is believed that the locations as shown on the contoured photographs are not misplaced over a maximum of 50 to 100 feet.

The most difficult portion of the area to map was found along the Chesapeake Bay due to the unique character of the drainage mentioned in the first paragraph of this report.

On short traverses the vertical closure was about 0.2 feet, and on longer traverses up to about two miles the closure was less than 1 foot. Many of the traverses were run down ridges ending at Chesapeake Bay and were closed out vertically on the high water line on the sand beach. The elevation of the high water line was usually in the immediate vicinity of 3.0 feet.

7 to 16. Same as for T-8148

17. BOUNDARY MONUMENTS AND LINES - There are no boundary lines in this quadrangle. All of the area lies within (Political) District No. 1, Solomons Island.

18. GEOGRAPHIC NAMES - Same as for T-8114.

Submitted by,

G. R. Fish

G. R. Fish,
Lieutenant, U. S. C. and G. S.

Approved and forwarded:

F. L. Gallen

F. L. Gallen,
Chief of Party.

26 Control:

There are four triangulation stations within the detailed limits of this map manuscript, namely:

Rekar, 1942
Cove Point Light House, 1942
White House N.E. Chimney, 1898
Wilson 2, 1934

There are ten triangulation stations and two reference monuments which fall just outside the detailed limits of this map manuscript, which were used to supplement the above control, namely:

Governor, 1934
Howe, 1942
Marshall, 1942
Point Farm, 1934
Buckler, 1934
Rob, 1907, M.S.F.S.
Briscoe, 1934
Hutchins 2, 1942
Sottler, 1934
Peak, 1908, M.S.F.S.
Stump R.M.1, 1907, M.S.F.S.
Island R.M., 1908, 1942

27 Radial Plot:

The radial plot for this map manuscript is described in section three of the report for Radial plot of sub-projects CS-278-A and CS-278-D which has previously been submitted.

Filed in photo grammatic section

28 Detailing:

Detail was delineated mainly from the nine lens photographs. 9" x 9" single lens contact prints were occasionally used for supplementary reference where interpretation of the nine lens photographs was uncertain.

Field Inspection for the entire area was satisfactory.

All streams and drainage were detailed after careful stereoscopic examination of the nine lens office photographs.

The detailing of this map manuscript was expedited by using a projection, the scale of which has been determined by running a scale plot. It was found that the average photographic scale was very close to that of the projection.

29 Supplemental Data:

Previous surveys T-256, T-281, T-388, ~~T-2107~~, T-2861, T-2868 cover the detailed portion of this survey. Copies of these surveys were not available to this compilation office.

30 Mean High Water Line:

The stage of tide of the nine lens photographs was computed, from tables of predicted tides, before detailing was attempted. Extensive use of the stereoscope was made in interpreting those portions of the mean high water line not indicated by field inspection.

31 Low Water & Shoal Lines:

There are no low water areas indicated on the field inspection photographs and shoal lines were detailed as interpreted from the office photographs.

32 Details Offshore from the High Water Line:

Brooms Island (marsh) and two submarine cables, both located in St. Leonard Creek are the only offshore detail on this map manuscript.

33 Wharves & Shoreline Structures:

All wharves, docks, and piers were detailed wherever they could be identified on the nine lens photographs. Several piers were selected as recoverable topographic stations. These were radially plotted and the detail thereof has been omitted as necessary to allow the station symbol to be shown.

34 Landmarks & Aids to Navigation:

One aid to navigation, Cove Point Light House, which is also a triangulation station; appears within the detailed limits of this map manuscript. Three aids to navigation, Broome Island Light, Island Creek Light, and Petersons Point, lie well to the west of the detailed limits, but were plotted on this map manuscript since there is no contemporary survey to the west. Positions of these three lights are submitted herewith on form No. 567. 175 (1944)

35 Hydrographic Control:

There are 29 recoverable topographic stations which may be useful for future hydrographic surveys. Descriptions and positions of these stations are submitted herewith on form No. 524. Included are the three aids to navigation mentioned in paragraph 34. Two temporary hydrographic stations have been selected and radially plotted to supplement the above recoverable topographic stations. These are described on the discrepancy overlay.

42 stations described on Form 524, including some triangulation station azimuth marks and a number of bench marks.

NMB
3/15/44

37 Azimuth Reference Monuments:

There are two azimuth reference monuments within the detailed limits, and four just outside the limits of this map manuscript.

Those within the detailed limits are:

Rekar Azimuth
Wilson Azimuth

Those just outside the detailed limits are:

Governor Azimuth
Howe Azimuth
Marshall Azimuth
Point Farm Azimuth

Descriptions and positions of these stations are submitted herewith on form No. 524.

38 Junctions:

There are no contemporary surveys to the North, East or West of T-8111. A satisfactory junction of planimetric detail with T-8116 to the South, has been made.

39 Geographic Names:

A list of undisputed and disputed geographic names, as recorded on U. S. Geological 15 min. Drum Point, Md. Quadrangle, by the Field Inspection Party, has been prepared to accompany this map manuscript.

40 Discrepancy Overlay:

A discrepancy overlay has been prepared to accompany this map manuscript. On it are noted requests for additional information needed to make this map manuscript complete. Questions concerning correct interpretation; comments and notes such as are deemed likely to be of assistance during the field edit have been included. Descriptions of two temporary hydrographic signals also appear on the discrepancy overlay. Also shown, for the use of the Baltimore Compilation Office, are the names or numbers of all bench marks.

41 Horizontal Accuracy:

Horizontal accuracy of the location of well-defined and less well-defined points of detail is believed to be within the limits as set forth in instructions for Project CS-278, paragraph 54, dated March 4, 1942.

42 Recommendation for Future Survey:

The planimetric detail as presented on this map manuscript is believed complete but is subject to field edit for corrections, additions and deletions.

43 Remarks:

The description of the area covered by map manuscript T-8111 and described in the field report herein attached, is considered adequate in its purpose, and requires no supplement.

44 Comparison with Existing Topographic Quadrangles:

Because of scale differences, no accurate comparison of this survey with the U. S. Geological Survey Quadrangle of this area, issued 1905, is practicable. An approximate comparison reveals some changes in the shoreline of St. Leonard Creek and in the shoreline of Chesapeake Bay at Flag Ponds. The latter has receded to a great extent since the date of the Geological survey. *How much?*

45 Comparison with Nautical Charts:

In comparing this map manuscript with charts No. 539 and 1225, both reissued in 1942, the detail agrees generally except for a change in the shoreline of Chesapeake Bay at Flag Ponds where, contrary to the note in paragraph 44 above, the shore appears to have built up. *How much?*

Respectfully submitted,
February 22, 1943

Edward H. Snyder
Edward H. Snyder
Photogrammetric Aid

Map Manuscript, Discrepancy
Overlay and Descriptive Re-
port reviewed by:

William H. Van Loon
William H. Van Loon
Pr. Photogrammetric Aid

Compilation of Map Manu-
script supervised by,

J. Edward Deal, Jr.
J. Edward Deal, Jr.
Asst. Photogrammetric Engineer

and

Joseph Steinberg
Joseph Steinberg
Asst. Photogrammetric Engineer

Approved & Forwarded,
February 23, 1943

Fred. L. Peacock
Fred. L. Peacock
Officer-in-Charge
Baltimore Field Office

FIELD EDIT REPORT
T-8111

46. The field edit was done by visual inspection using the map manuscript in the field, transferring additions and deletions to a smooth copy while inking.

The following scheme was used while inking:

<u>Features</u>	<u>Colors</u>
Additions, bench marks, wye level elevations and crosses	Black
Deletions	Green
Contours	Brown
Drainage features	Blue
Political boundaries	Violet

47. The position and amount of detail on this manuscript is believed to be complete and accurate.

48. A horizontal accuracy test was run in Quadrangles T-8116 and T-8138.

The vertical accuracy test is the subject of a report submitted by Lieut. G. R. Fish on Project 278-A.

49. The U. S. Army has established an amphibious training base at Cove Point. The present boundaries have been shown by the field edit party on the map manuscript; however, this base may be enlarged in the near future and any further information received will be forwarded to the Washington Office.

Submitted by,
Louis Levin per J.H.G.
Louis Levin,
Photogrammetric Aid

Approved and forwarded:
F. L. Gallen
F. L. Gallen,
Chief of Party.

LIST OF GEOGRAPHIC NAMES

Undisputed

Bertha
Breedens Point
Brooms Creek
Brooms Island
Calvert Beach
Calvert Beach Run
Camp Conoy
Cove Point Hollow
Egypt Cove
Flag Ponds
Goldstien Branch
Grape Vine Cove
Grays Creek
Grover Creek
Grovers Creek
Grovers Pond
Hellen Creek
Johns Creek
Kings Creek
Long Beach
Laveel Branch
Kenwood Beach

Lusby
Mears Cove
Mears Creek
Mill Creek
Mosley Branch
Perrin Branch
Planters Wharf
Planters Wharf Creek
Rodney Point
Rollins Cove
St. Leonard
St. Leonard Creek
St. Paul Branch
Sollers
Sollers Cove
Thomas Branch
Webster Ponds
Wilbur Creek
Wilbur Pond
Woodland Branch

LIST OF GEOGRAPHIC NAMES

<u>Disputed Name</u>	<u>Recommended Name</u>
Big Cove Point	Cove Point
Cove Point (town)	Cove Point Beach
Flagpond Creek	Quakers Swamp
Mackall	Mackall Wharf
Point of Rocks	Rocky Point
Webster Marsh	Cove Point Marsh

Box 1896, Baltimore 3, Md.

TELEGRAPH ADDRESS:

EXPRESS ADDRESS:

DEPARTMENT OF COMMERCE

U. S. COAST AND GEODETIC SURVEY

Ship LYDONIA

December 26, 1944

To: The Director
U. S. Coast and Geodetic Survey
Washington 25, D. C.

From: Commanding Officer
Ship LYDONIA

Subject: Error in Topographic Station CORA

While executing graphic control in the vicinity of Long Beach, Maryland, an error was found in the location of topographic station CORA (Sheet T8111). The description of this station states that the mark is at the base of a 10-foot locust tree. There are two 10-foot locusts and the mark was apparently set at the base of the wrong tree, the easternmost of the two.

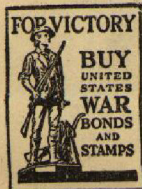
Since signal "POL" (flagpole) used in 1943 hydrography was located with reference to station CORA, its position is also changed. The correct positions are as follows:

CORA - Lat. 38° 27' +197 meters
Long. 76° 27' +591 meters

POL - Lat. 38° 27' +115 meters ✓
Long. 76° 27' +550 meters. ✓

RR Moore
R. R. Moore
Lieut. Comdr. USC&GS
Commanding Ship LYDONIA

cc: Norfolk



~~Correct position on form 524,
on manuscript, and on h6 copy,
of which on per printed good - mark
up the correction copy.~~

POST-OFFICE ADDRESS:

Box 1896, Baltimore 3, Md.

TELEGRAPH ADDRESS:

EXPRESS ADDRESS:

KTA

1945 JAN - 6 - AM 11:45

DEPARTMENT OF COMMERCE

U. S. COAST AND GEODETIC SURVEY

Ship LYDONIA

January 2, 1945

To: The Director
U. S. Coast and Geodetic Survey
Washington, D. C.

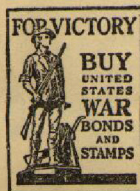
From: Commanding Officer
Ship LYDONIA

Subject: Location of Topographic Station CORA

Reference: Letter dated, Dec. 26, 1944 (C.O. LYDONIA)

In regard to the location of Topographic Station CORA it should be further stated that the position furnished in reference letter is the position of the station mark and was obtained by assuming the previous position to be at the base of the western most of the two locust trees. Both trees are dimly visible on the air photographs.

L. P. Raynor
L. P. Raynor
Commander, USC&GS
Commanding Ship LYDONIA



*This letter not entirely clear
but accept graphic content position
and correct 544 form 524, manuscript
and file copy. If station is shown on
the published quad. mark up the
connection copy. Bgg.*

426
POST-OFFICE ADDRESS:

Box 1896, Baltimore 3, Md.

TELEGRAPH ADDRESS:

EXPRESS ADDRESS:

1945 JAN - 18 - AM 11:45

DEPARTMENT OF COMMERCE

U. S. COAST AND GEODETIC SURVEY

Ship LYDONIA

January 17, 1945

To: The Director
U. S. Coast and Geodetic Survey
Washington, D. C.

From: Commanding Officer
Ship LYDONIA

Subject: Location of topographic station ETTA T-8111

Reference: 826-EJ, Jan. 29, 1944

A card showing measurements that were recently taken at station ETTA by Lieut. Comdr. C. R. Reed, while pond was iced over, is enclosed for your information. These measurements seem to indicate that ETTA was correctly located but you may wish to check these data in the Office.

If a change in the geographic position of ETTA is found after such checks, please advise at your earliest convenience as the data are needed by this vessel and the Norfolk Processing Office. Copies of air photographs 8927 and 8938 are on board and will be returned on your instructions to do so.

L. P. Raynor
L. P. Raynor
Commander, USC&GS
Commanding Ship LYDONIA

8411
LPR/s



Position of - H.C. Reed

T-8111

No. 1
Decisions

Remarks

1		383763
2		"
3		"
4		"
5		"
6		"
7		"
8		383764
9		"
10		"
11		"
12		"
13		"
14		"
15		"
16		" USGB
17		"
18		"
19		"
20	Recent decision of USGB	" USGB
21		384764
22		"
23		"
24	Recent decision	" USGB
25		"
26		" USGB
27		"

GEOGRAPHIC NAMES

Survey No. T-8111

New COVE POINT quadrangle

No. 1 Name on Survey

	On Chart No.	On previous survey No.	On U. S. quadrangle Maps	From local information	On local Maps	P. O. Guide or Map	Rand McNally Atlas	U. S. Light List	
A	B	C	D	E	F	G	H	K	
Cove Point ✓	✓								1
Cove Point Beach ✓	✓ (settlement)								2
Cove Point Hollow ✓	✓ (bight of cove south of point)								3
Cove Point Marsh ✓	✓								4
Webster Ponds ✓	✓								5
Wilbur Pond ✓	✓								6
Wilbur Creek ✓	✓								7
Bertha ✓	✓								8
Mill Creek ✓	✓ (only upper part on this quad.)								9
Hellen Creek ✓	✓	"	"	"					10
St. Paul Branch ✓	✓								11
Grovers Pond X	not shown								12
St. Leonard Creek ✓	✓								13
Mears Creek ✓	✓								14
Mears Cove ✓	✓								15
Sollers ✓	✓								16
Rodney Point ✓	✓								17
Sollers Cove ✓	✓								18
Grapevine Cove ✓	✓								19
Mackall ✓	✓								20
Grays Creek ✓	✓								21
Thomas Branch ✓	✓								22
Grover Creek ✓	✓								23
Rocky Point ✓	✓								24
Camp Conoy ✓	✓								25
Lusby ✓	✓								26
Johns Creek ✓	✓								27

No. 8111

No. 2

Remarks

Decisions

1		384764
2		"
3		"
4		"
5		"
6		"
7		"
8		"
9		"
10		"
11		"
12		"
13		"
14		"
15		"
16		"
17		"
18		"
19		"
20		"
21		"
22		USGB
23		
24		
25		County Maps
26		383764
27		Road maps

GEOGRAPHIC NAMES

Survey No. T-8111

No. 2

GEOGRAPHIC NAMES											
Survey No. T-8111											
No. 2											
Name on Survey		On Chart No.	On previous survey No.	On U. S. quadrangle Maps	From local information	On local Maps	P. O. Guide or Map	Rand McNally Atlas	U. S. Light List		
A	B	C	D	E	F	G	H	K			
✓	Laveel Branch	✓								1	
✓	Mosley Branch	✓								2	
✓	Goldstein Branch	✓								3	
✓	Breedens Point	✓								4	
✓	Rollins Cove	✓								5	
✓	Egypt Cove	✓								6	
✓	Brooms Island	✓								7	
✗	Brooms Creek	✓								8	
✓	Planters Wharf	✓								9	
✓	Planters Wharf Creek	✓								10	
✓	Grovers Creek	✓								11	
✗	St. Leonard	(note that most of it is on next quad. to west)								12	
✓	Quakers Swamp	✓								13	
✓	Woodland Branch	✓								14	
✓	Perrin Branch	✓								15	
✓	Flag Ponds	✓								16	
✓	Long Beach	✓								17	
✓	Calvert Beach	✓								18	
✓	Calvert Beach Run	✓								19	
✓	Kings Creek	✓								20	
✗	Kenwood Beach	✓	not shown							21	
✓	Chesapeake Bay	✓								22	
✓	Calvert County	(With respect to item on page 2 of Desc. Reprt (17), note that the old U.S.G.S. quadrangle shows county line in northeast corner of this quadrangle)								23	
✗	Dorchester County									24	
✓	Solomons Island	No. 1	(political subdivision)							25	
✓	Patuxent River	✓								26	
✓	Maryland Highway No. 2	✓								27	

M 234

Remarks

Decisions

1	Highway number on various road maps	
2	" " " "	
3	Not a numbered highway	
4	.Name shown on compilation, west side of St. Leonard	
5	Creek, but not in Names Report.	
6		
7		
8		
9		
10		
11		
12		
13		
14		
15		
16		
17		
18		
19		
20		
21		
22		
23		
24		
25		
26		
27		

GEOGRAPHIC NAMES

Survey No. T-8111

No. 3

Name on Survey	A	B	C	D	E	F	G	H	K	
✓ Md. Highway No. 497---Cove Point Road				✓						1
✓ Md. Highway No. 266---Sollers Wharf Road				✓						2
✓ Calvert Beach Road				✓						3
Norris Cove Camp Dock				✓						4
										5
										6
										7
										8
										9
										10
										11
										12
										13
										14
										15
										16
										17
										18
										19
										20
										21
										22
										23
										24
										25
										26
										27

Since underlined in red approved

by L Heck on 5/24/43

M 234

since underlined in red approved
 by L. Heck on 5/24/43

RECORDS

Between January, 1942 and July, 1944, this Bureau completed 323 quadrangles. These maps have been published, or are in the process of being published on scales of 1:31,680 or 1:25,000. This series of quadrangles includes a land area of approximately 15,000 square miles. Incident to this work, a considerable volume of survey records and data has accumulated which will be filed for future reference. This material is filed as follows:

Registered and Filed in the Vault

Cloth-mounted copy of the published quadrangle.

Black and white cloth-mounted copy of the map manuscript. This copy is filed to preserve original survey detail shown on the manuscript at 1:20,000 scale which may not have been shown on the published sheet. For political boundaries, woodland, marsh, and swamp limits, refer to the published quadrangle for the finally adopted positions.

Descriptive Report.

Filed in the Photogrammetric Section - Surveys Branch

Field inspection photographs.

Contoured photographs (on which planetable contouring work was performed.)

Field edit sheet.

Descriptions of recoverable topographic stations (Form 524), filed in Reviewing Unit.

Supplementary traverse and level records.

Field notes, computations, lists of positions, and tabulations of results of horizontal and vertical accuracy tests.

Reproduction proof.

Correction sheet (copy of quadrangle showing in red changes to be made when next printed.)

Check lists of work performed on each sheet in the Washington Office during review, drafting, edit, and reproduction.

Copies of specifications and all instructions
to field parties and field offices.

Filed in Reproduction Branch

Glass negatives of the color separation drawings.

Filed in the Library

Special report on field work by Commander K. T.
Adams, 1944.

Special report on office work by B. G. Jones, 1944.

Season's report on field work by Commander F. L.
Gallen, 1944.

Season's report on field work by Commander R. L.
Schoppe, 1944.

Delivered to the Army Map Service in accordance
with the contract

Film negatives and film positives of the color
separation drawings.

All color separation drawings.

Original celluloid manuscript.

A correction sheet consisting of a copy of the
first edition of the quadrangle with notes in red
indicating changes desirable at the next printing.

General Procedure in the Production of Topographic Quadrangles for the War Department

This quadrangle, together with similar adjoining maps produced under Project C.S.278-A, was prepared by the Coast and Geodetic Survey for the War Department under "General Specifications for War Department Mapping Program" issued about December 1941, in which is incorporated the "Standard of Accuracy for a National Map Production Program" issued by the Bureau of the Budget under date of June 10, 1941.

The general procedure in the production of this and the adjoining quadrangles was:

FIELD SURVEYS

Aerial photography with the Coast and Geodetic Survey nine-lens camera, with airplane and flight crew furnished by the U. S. Coast Guard. The photographs were taken to the scale of 1:20,000. (This photography was supplemented by the use of single-lens photographs.) Ground inspection of the photographs for identification of control points, and classification and clarification of planimetric details on the photographs.

Contouring by planetable directly on the photographs. Supplementary vertical control was established by means of an extensive subordinate level net, furnishing unmarked elevations at road intersections, driveways, and numerous other points identifiable on the photographs.

COMPILATION OF MANUSCRIPT

Compilation on the map manuscripts by radial plot methods (celluloid hand templates) of all planimetry and contours. These manuscripts were drawn on the scale of 1:20,000 on celluloid sheets on which polyconic projections had been ruled with the Projection Ruling Machine in the Washington Office. Compilation was accomplished in the Baltimore ~~Temper~~ Photogrammetric Office.

FIELD EDIT

Comparison of a copy of the manuscript with the ground. This included inspection for completeness and accuracy as well as the location by planetable methods of additional details, checking of nautical and aeronautical aids to navigation, etc.

Accuracy Tests - Application of systematic horizontal and vertical accuracy tests to check the maps for conformity with the specifications. These tests consisted of comparison of the map position and elevation of selected random points with the true position and elevation as independently determined by standard survey methods.

PROCESSING IN THE WASHINGTON OFFICE

Review - Examination of the manuscript for accuracy and completeness of compilation and compliance with specifications, correcting where necessary; addition of military and state grids and other special features; and verification of the general adequacy of the manuscript as a basis for the production of a finished map.

Drafting and Reproduction - Preparation of smooth color separation drawings on 1:20,000 scale on metal-mounted "blue-line" copies of the manuscript. From these drawings, negatives and printing plates were prepared for reproduction of the finished map on the scale of 1:31,680 or 1:25,000.

DIVISION OF CHARTS

SURVEYS BRANCH

REVIEW OF AIR PHOTOGRAPHIC SURVEY T-8111

COVE POINT QUADRANGLE

This quadrangle manuscript has been examined for completeness, accuracy, and conformity with the specifications. It is adequate for smooth drafting, reproduction and publication. Revisions found to be necessary in this office are discussed on the next page.

Horizontal and Vertical Accuracy

The closest horizontal accuracy test was performed on T-8116. A vertical accuracy test was made by running out the odd interval 20 foot contours on field photograph 8923. In all places these fell practically midway between the contours already located on the photographs.

Previous Surveys

This manuscript has been compared with the following previous topographic surveys of this Bureau and other agencies. This map is satisfactory to supersede the previous surveys over the common area.

T-256	1:20,000	1848
T-231	1:20,000	1847
T-388	1:20,000	1852
T-2861	1:20,000	1907
T-2868	1:20,000	1908
"Drum Point"	1:62,500	1905 U.S.G.S.

Comparison with Nautical Charts Nos. 539 and 1225

The manuscript has not been applied to the charts at the date of this review. The following comments are pertinent to the compilation and correction of nautical charts:

The details of T-8111 are complete and adequate for chart correction.

The following revisions of the map manuscript were found to be necessary and were accomplished as a part of this review:

In some areas contours were shifted slightly to conform with the drainage.

Reviewed 5/1/43 By Willis H. St. John
under direction of D. H. Benson *WHS*

Inspected by B. G. Jones *BGJ*

Examined and approved:

Robert W. Kral
Chief, Surveys Branch

K. T. Adams
Chief, Topography Section

L. B. Borden
Chief, Div. of Charts

G. W. Hude
Chief, Div. of Coastal
Surveys

