

8004

Diag'd. on Diag. Ch. No. 1203

Form 504

U. S. COAST AND GEODETIC SURVEY

DEPARTMENT OF COMMERCE

## DESCRIPTIVE REPORT

Type of Survey Planimetric-Air-Photographic

Field No. CS-272 Office No. T-8004

### LOCALITY

State Maine

General locality Coast of Maine

Locality Metinic Island and Vicinity

1941-'43

CHIEF OF PARTY

F.L. Peacock

LIBRARY & ARCHIVES

DATE May 3, 1949

B-1870-1 (1)

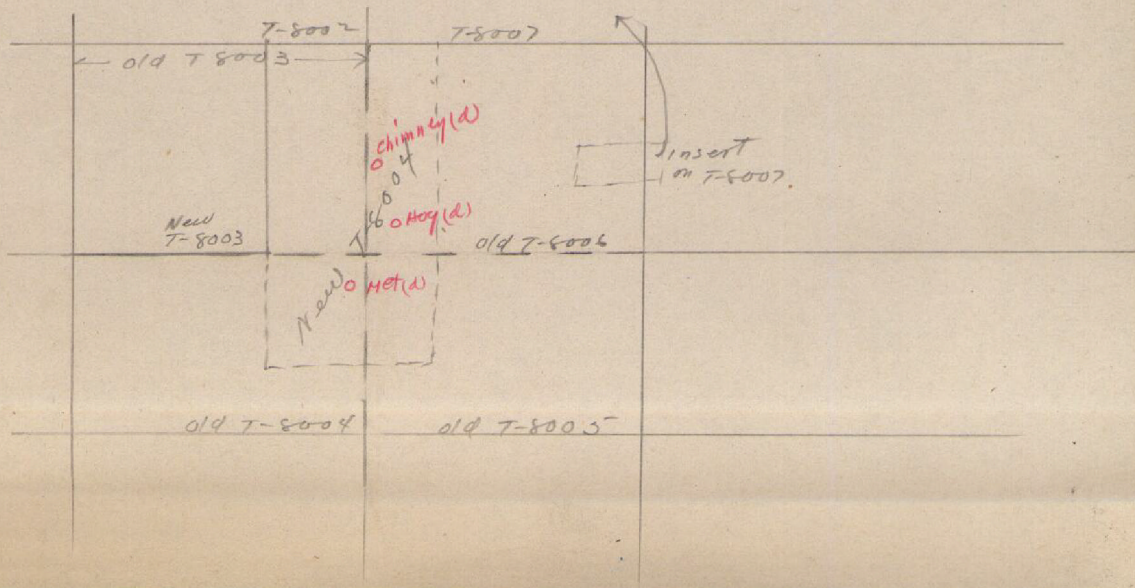
8004

CONTENTS  
Descriptive Report T-8004

Part

1. Compilation Report for Preliminary Map Drawing, Metinic Island ...
2. Washington Office Review.
3. History of the radial plot and compilation of the southeastern portion of Survey No. T-8003.
4. Compilation Report for T-8004 - *Data Record filled out.*
5. Compilation Report for the southeast portion of Survey No. T-8003
6. Compilation Report for Survey No. T-8005

(Survey numbers T-8005 and T-8006 have been dropped. The land area of T-8005 has become a part of the new T-8004. The land areas of T-8006 have become parts of new T-8004, and an insert to T-8007.)





DATA RECORD

**Preliminary Compiled Map Drawing  
for the Areas of Motinio, Hog, Hubble  
and Motinio Green Islands.**

Quadrangle (II):

Tenants Harbor (15') (U.S.C.S.)

Project No. (II): CS-272

Sub-Project No. CS-272-0

Field Office:

Air Photographic Party No. 2

Baltimore, Maryland

Compilation Office:

Air Photographic Party No. 2

Baltimore, Maryland

Instructions dated (II III):

April 1, 1942

Additional instructions dated March 4, 1944 (826-RGR)

Supplemental instructions dated April 11, 1944

Completed survey received in office:

Chief of Party:

~~Fred. L. Peacock~~ *Henry C. Fortino*

Chief of Party:

Fred. L. Peacock

Copy filed in Descriptive

Report No. T- (VI)

Reported to Nautical Chart Section:

Reviewed:

Applied to chart No.

Date:

Redrafting Completed:

Registered:

Published:

Compilation Scale: Approximately 1:9,745 Published Scale:

Scale Factor (III): Approximately 1.026

Geographic Datum (III): N.A. 1927

Datum Plane (III): Mean Sea Level

Reference Station (III): None selected for preliminary compilation

Lat.:

Long.:

Adjusted

Unadjusted

State Plane Coordinates (VI):

X =

Y =

Military Grid Zone (VI)

PHOTOGRAPHS (III)  
(Metal mounted)

<u>Number</u>	<u>Date</u>	<u>Time</u>	<u>Scale</u>	<u>Stage of Tide</u>
7294	10/21/41	9:15 a.m.	1:10,000	7.6' above H.L.W.
7295	10/21/41	9:15 a.m.	1:10,000	7.6' above H.L.W.
7296	10/21/41	9:15 a.m.	1:10,000	7.6' above H.L.W.

Tide from (III): Predicted tide tables - Portland, Maine; corrections to  
Monhegan Island.  
Mean Range: 9.3' Spring Range: 10.6'

Camera: (Kind or source) U. S. Coast and Geodetic <sup>Survey</sup> nine lens camera (focal  
length 8 1/2"). Negatives are on file in the Washington Office.

Field Inspection by: date: Season 1943  
Lieut. Henry O. Fortin  
Season's Field Inspection Report previously submitted.  
Field Edit by: date:

Date of Mean High-Water Line Location (III): Date of photographs supplemented  
by the field inspection data obtained in 1943.

Margator traced from Chart No. 312 by:  
Projection ~~xxxxxxxxxxxxxxxxxxxx~~ (III) date: 4/7/44  
Harry R. Rudolph  
~~xxxxxxxxxxxxxxxxxxxxxxxxxxxxxxxx~~ date:

Control <sup>radially</sup> plotted by: Walter E. Schmidt date: 4/7/44  
~~xxxxxxxxxxxxxxxxxxxxxxxxxxxxxxxx~~ date:

Radial Plot by: Walter E. Schmidt date: 4/5/44

Detailed by: Walter E. Schmidt <sup>Interior and</sup> (Shore line - rough draft) date: 4/8/44

Reviewed in compilation office by: Harry R. Rudolph date: 4/8/44

Elevations on Field Edit Sheet  
checked by: date:



STATISTICS (III)

Land Area (Sq. Statute Miles); 1 square statute mile.

Shoreline (More than 200 meters to opposite shore):  $7\frac{1}{2}$  statute miles.

Shoreline (Less than 200 meters to opposite shore): None.

Number of Recoverable Topographic Stations established: One.

Number of Temporary Hydrographic Stations located by radial plot: 39.

Leveling (to control contours) - miles: None.

Roman numerals indicate whether the item is to be entered by,

(II) Field Party, (III) Compilation Party, or, (VI) the Washington Office.

When entering names of personnel on this record give the surname  
and initials (not initials only).

Remarks:

PRELIMINARY COMPILATION  
METINIC ISLAND AND VICINITY  
COAST OF MAINE  
PROJECT CS-272

Since the 1943 Field Inspection Sub-Party did not furnish adequate field identified horizontal control for the compilation of Metinic Island and vicinity, Maine, and since local hydrographic control will be needed by an operating hydrographic party before the 1944 Field Inspection Sub-Party can establish the necessary additional control for a compilation of this area, a preliminary compilation has been made in accordance with the Director's instructions contained in letter No. 826-RGR, dated March 4, 1944.

This preliminary compilation has been made on acetate without a projection and should be used for hydrographic control of immediately adjacent hydrography only. It is doubted that signals on Metinic Island can satisfactorily be used in conjunction with coastal signals for hydrographic control of intervening waters.

\* The preliminary compilation has been brought to approximate 1:9745 scale. Some degree of orientation has been obtained by comparison with the largest scale chart of the area and has been indicated by an approximate mercator projection. The establishment of additional control and recompilation on a polyconic projection to a definite scale is contemplated for future work of this office.

A detailed report on the preliminary compilation by Walter E. Schmidt, Assistant Photogrammetric Engineer, who made the preliminary compilation, follows.

Respectively submitted,  
April 10, 1944

---

Fred. L. Peacock  
Chief of Party  
Coast and Geodetic Survey

\* Final computed scale 1:9688



26 CONTROL:

The horizontal control shown on the preliminary compiled Map Drawing consists of the two U. S. Coast and Geodetic Survey triangulation stations, METINIC ISLAND, HOUSE, CHIMNEY, 1910, and METINIC, 1858, 1934, r. 1943.

The object of the former station was reported by the 1943 Field Inspection Sub-Party to have been destroyed. The foundation of an old chimney site was identified as the station. However, the Field Inspection Sub-Party was not certain whether or not the object of the station had been previously built over the old foundation site. The relative radially plotted position of the old foundation site as identified has been shown on the preliminary compiled Map Drawing with a dashed black acid ink line triangulation symbol. The recovery and identification of "METINIC, 1858, 1934" were reported by the 1943 Field Inspection Sub-Party as positive. The relative radially plotted position of this station was shown on the preliminary compiled Map Drawing with a full black acid ink line triangulation symbol.

*Lost.  
Removal  
from  
Mms*

27 RADIAL PLOT:

Photographs Nos. 7294 to 7296, inclusive, which covered the entire area of the preliminary compiled Map Drawing, were sent to the Washington Office for the investigation of tilt. The tilt in photograph No. 7295 was found by computation to be  $1^{\circ} 13''$ . The tilt in the remaining photographs was reported to be negligible.

The radial plot was laid by the principal point traverse method (graphic triangulation). No celluloid templates were used, the photographs being oriented directly under the celluloid sheet used for the compilation.

The relative radially plotted positions of points determined by the intersection of two or more radials, the angular deviations of which were considered large enough to obtain a sharp intersection, have been shown on the glossy side of the preliminary compiled Map Drawing with small blue ink circles. The relative radially plotted positions of points determined by the intersection of radials, the angular deviations of which were very small, have been shown with small green ink circles. The relative positions of the photograph centers as determined by the radial plot have been shown with very small blue ink circles circumscribed by large blue ink circles accompanied by the numbers of the photographs.

The positions of the triangulation stations, photograph centers, hydrographic control stations, and minor detail points as determined by the radial plot, are considered relatively strong, with the exception of temporary hydrographic signal site No. 2105, which is situated on Southeast Breaker. The image of this signal site was visible on only one photograph.

*see  
review*



27 RADIAL PLOT: (Cont'd.)

Its position was determined by bringing into correspondence, by use of the vertical projector, the images of a few points as identified on Photograph No. 7294, with the radially plotted positions of the same points as shown on the preliminary compiled Map Drawing, and then pricking the position of the signal site direct. The relative position of this signal site is approximate and should be used with caution by the operating hydrographic party.

Position  
corrected.  
See  
review

28 DETAILING:

The area of Metinic, Hog, Nubble, and Metinic Green Islands, and Southeast Breaker have been shown on the preliminary compiled Map Drawing.

The field inspection data were adequate except in the amount of horizontal control. The orientation of the islands as now shown on the Map Drawing with respect to the mercator projection is only approximate, since the 1943 Field Inspection Sub-Party failed to obtain additional horizontal control necessary for the correct orientation. The additional control is to be obtained by the 1944 Field Inspection Sub-Party. The number of photographs was sufficient for office detailing. The mercator projection as shown on the Map Drawing has been traced, after enlargement by use of the vertical projector, from Chart No. 312.

All buildings situated on Metinic Island, the images of which were clearly visible on the photographs, have been shown on the preliminary Map Drawing. There are no buildings situated on any of the other islands.

30 MEAN HIGH-WATER LINE:

The islands appearing on the tilted photograph, No. 7295, were outlined with a white ink line by the Washington Office. The white line was assumed by this Compilation Office to be an attempt to delineate the Mean High-Water Line. However, comparison of this line with the Mean High-Water Line as shown on the field inspection photographs by the Field Inspection Sub-Party showed many disagreements. The Mean High-Water Line was detailed in accordance with the field inspection data and shown on the preliminary compiled Map Drawing with a full heavy-weight black acid ink line, the center of which is considered by this Compilation Office to be the true position.

Compiled-  
tion S.L.  
corrected.

The white  
line was  
much  
closer to the  
actual S.L.  
See review

The outer limits of rock ledge, which were visible on the photographs, and which bordered the Mean High-Water Line have been shown with the conventional symbol.

The approximate outer limits of shoal and foul areas bordering the Mean High-Water Line have been detailed in accordance with the field in-



30 MEAN HIGH-WATER LINE: (Cont'd.)

spection data and shown with a dashed light-weight black acid ink line accompanied by descriptive notes. This dashed light-weight black acid ink line is not the position of the Mean Low-Water Line. It has been shown for use of the operating hydrographic party only.

31 LOW-WATER AND SHOAL LINES:

The only low-water and shoal lines shown are those mentioned under side heading No. 30.

32 DETAILS OFFSHORE FROM THE HIGH-WATER LINE:

The offshore features shown on the preliminary compiled Map Drawing consist of rocks. The extent to which they bare at Mean High-Water or Mean Low-Water has been shown by notes.

33 WHARVES AND SHORE LINE STRUCTURES:

The only shore line structure shown on the preliminary compiled Map Drawing is a pier which is situated in a small cove on the east side of Metinic Island.

34 LANDMARKS, FIXED AIDS TO NAVIGATION AND AERONAUTICAL AIDS:

There were no landmarks, fixed aids to navigation, or aeronautical aids recommended within the area of the preliminary compiled Map Drawing by the Field Inspection Sub-Party.

35 HYDROGRAPHIC CONTROL:

The hydrographic control consists of 40 stations. Of these, 39 are temporary hydrographic stations, the remaining one being a Recoverable Topographic Station. The relative positions of all the stations determined by the radial plot have been shown with 2½ mm. black acid ink circles. The name, description, and number of the Recoverable Topographic Station accompanied by the note "Recoverable Topographic Station", and the numbers and descriptions of the temporary hydrographic stations have been lettered on the Map Drawing.

Form 524 will be submitted with the Descriptive Report of Map Drawing Survey No. T-8003 for Recoverable Topographic Station No. 2117 -- Chimney on gray house. *This Sta. has been filed under T-8004*

[Nos. 2105 - 2144 incl.] plotted, numbered,  
& described.  
[2145, 2146 added later] on manuscript



37 GEOGRAPHIC NAMES:

No investigation of geographic names within the area of the preliminary compiled Map Drawing was made by the Field Inspection Sub-Party. The names as shown are in accordance with those appearing on Nautical Chart No. 312. An alphabetical list of the undisputed names has been submitted herein. There were no disputed names.

44 COMPARISON WITH EXISTING TOPOGRAPHIC QUADRANGLES:

Tenants Harbor (15'), U.S.G.S., scale 1:62,500, edition of 1906, reprinted 1939.

Since the scale difference between the Map Drawing and the above-mentioned quadrangle was very large, comparison of small planimetric details could not be readily made. However, planimetry common to both was in fair agreement, with the exception that a pier as shown on the Map Drawing on the east side of Metinic Island does not appear on the quadrangle, and also, most of the interior details as shown on the Map Drawing, do not appear on the quadrangle.

45 COMPARISON WITH NAUTICAL CHARTS:

Chart No. 312, scale 1:40,000, published May 1943, corrected to April 24, 1943.

Planimetry common to both is in fair agreement.

A few of the charted rocks have not been shown on the Map Drawing, because the images of such features were not visible on any of the photographs, and no field inspection data were submitted for their identification. A pier as shown on the Map Drawing in a small cove on the east side of Metinic Island, northwest of The Nubble, does not appear on the chart. None of the interior planimetric detail, as shown on the Map Drawing, appears on the chart.



- 8 -

Respectfully submitted,  
April 10, 1944

---

Walter E. Schmidt,  
Asst. Photogrammetric Engineer.

Preliminary Compilation  
Reviewed by:

---

Harry E. Rudolph,  
Senior Photogrammetric Aid.

Approved and Forwarded,  
April 11, 1944

---

Fred. L. Peacock,  
Chief, Air Photographic Party No. 2

WASHINGTON OFFICE REVIEW

1. As stated in the descriptive report, there was not sufficient ground control for plotting this island on a projection. However, it was desired to make a plot on which all details would be relatively correct in distance and direction. The sheet could then be placed on a projection at exact scale as soon as a geographic position could be made available at the south end of the island (there already being such a position at the north end.)
2. The island is covered by nine-lens photograph No. 7294 at the south end, 7295 at the center, and 7296 at the north end. However, the island is too narrow to plot by radial line methods since the flight line parallels the long axis of the island.

3. To meet this situation, photograph No. 7295 was forwarded to the Washington Office where the tilt was computed and the rectified photograph returned to Baltimore. It was intended that the rectified photograph be used as follows:

Rectified photograph No. 7295 was to be placed under a sheet on celluloid and all shoreline details, off-lying rocks, and hydrographic signals on or near the plane of high water traced directly therefrom. Positions of elevated points could be obtained only by first tracing the position from the rectified photograph and then correcting it by computing the displacement and correcting the position radially towards the center of the photograph.

4. Since the method was rather unusual and instructions for the work were in part oral, the Baltimore Office was requested to send in the photographs with the sheet for examination in this office prior to forwarding copies to the hydrographic party. Examination in the Washington Office disclosed that:

(a) Photographic quality of the rectified print was very poor; the print was reversed laterally as well as in tone, making it difficult to use; and that some error probably had been made in the rectification.



- (b) The Baltimore Office had not been furnished a copy of the old survey (1:20,000, showing approximate contours) which contained the only available data regarding elevations in the interior of the island needed for computing relief displacement of the positions of elevated objects transferred from the rectified photograph.
- (c) The descriptive report submitted with the sheet did not state just how the rectified photograph had been used and seemed to indicate that too great weight had been given to radial plotting the details.
5. In order to check the applicability of the method suggested, it was decided to recompile the sheet in this office. This was done as outlined under paragraph 3 above. However, before compiling the sheet the tilt of photograph 7295 was recomputed and a new rectified photograph made. The positions of details as between the Baltimore compilation and one done in this office varied in a few cases by small amounts. The only appreciable differences being on stations 2127, 2130, and 2139 which differed by from 0.5 to 0.8 mm. This is not considerable considering the method. Most of the work is identical on the two sheets. The following signals have been corrected on the sheet compiled in Baltimore: 2130, 2127, and 2139.
6. Two additional signals (Nos. 2145 and 2146) have been picked in the office and added to the compilation made in Baltimore, and this has been reproduced and copies furnished the hydrographic party.
7. The compilation made in the Washington Office is being forwarded to Baltimore for comparison. Eventually the details from the advance compilation will be transferred to air photographic surveys T-8003, T-8004, T-8005, and T-8006 by the Baltimore Office.

*This was done, but was later combined into one planimetric sheet: T-8004.*

*J.R.*

B. G. Jones



HISTORY OF THE RADIAL PLOT AND COMPILATION OF THE SOUTHEAST PORTION  
OF SURVEY No. T-8003

*(which has become part of a new T-8004)*

Reference A:

The second paragraph under side heading No. 27 and the first paragraph under side heading No. 28 of the Descriptive Report for the northwest portion of Map Drawing, Survey No. T-8003.

Reference B:

Descriptive Report covering the preliminary compilation of Metinic Island and vicinity, Coast of Maine, Project No. CS-272, and with special reference to the Chief of Party's introductory paragraph.

Reference C:

Washington Office review of the preliminary compilation mentioned in Reference B.

All the above references are embodied in the Descriptive Report for Survey No. T-8003, of which this "History" forms a part.

In early March, 1944, when the Descriptive Report for the northwest portion of Survey No. T-8003 was prepared, it was expected to await the establishment of necessary additional control before running the radial plot for Metinic Island and compiling the southeast portion of this Survey, as evidenced by the contents of the paragraphs mentioned in Reference A. The southeast portion of this Survey consists of a considerable portion of the area of Metinic Island and a few nearby islets. It is separated from the northwest portion by a water area and there are no overlapping air photographs; thus, the radial plot for this portion is entirely independent but logically includes the whole of Metinic Island and surrounding islets. The portions of Metinic Island outside the area of Survey No. T-8003 lie within the areas of Surveys No. T-8004, T-8005, and T-8006.

On March 7, 1944, the Map Drawing containing the compilation of the northwest portion of the area of Survey No. T-8003, together with its Descriptive Report, was transmitted to the Washington Office in order that the pertinent



data thereon could be furnished to operating Hydrographic Parties for their early use. At almost the same time, instructions were received from the Washington Office to proceed immediately with a preliminary radial plot and compilation of the area of Metinic Island and adjacent islets, to approximate scale and approximate orientation, on a sheet of acetate without projection lines. This was done and the preliminary compilation, together with a complete Descriptive Report, (see Reference B) was submitted to the Washington Office on April 11, 1944.

Upon examination of the preliminary compilation at the Washington Office, there was some skepticism (see Reference C) concerning the accuracy obtainable with the material and data available at the Compilation Office. A partial recompilation was made at the Washington Office using a better rectified print than the one which had been furnished to Baltimore, and a copy of an old Survey which showed approximate contours. The recompilation included complete shoreline of Metinic Island and the positions of all temporary hydrographic signals. The two compilations were found to be in very good agreement. The Washington Office compilation moved the positions of three temporary hydrographic signals by a small amount.

The Washington Office also selected and plotted two additional temporary hydrographic stations. The Washington Office relative positions of all five of these stations have been transferred to the Baltimore Office preliminary compilation and are being accepted for transfer to the Map Drawings on which they fall.

On May 31, 1944, the Baltimore Compilation Office received from its Field Inspection Sub-Party, the necessary additional horizontal control to perfect the scale and orientation of the preliminary compilation of Metinic Island. The additional control consisted of two Recoverable Topographic Stations, HOG, 1944, and MET, 1944, located by rounds of theodolite directions and identified on the nine lens photographs. Station HOG could be pricked direct on the photographs. Station MET was identified by a field inspection station designated TEM. The positions of these two stations were computed at the Baltimore Office and plotted on the Map Drawing Projection for Survey No.

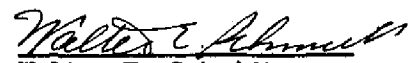
T-8003. Station HOG fell a short distance outside the detail limits of the Map Drawing. F.I.P. TEM necessitated a temporary dog-ear. Stations HOG and TEM were then radial plotted on the preliminary compilation.

The next step was to project the preliminary compilation onto the Map Drawing for Survey No. T-8003 by means of the vertical projector, making Triangulation Station METINIC 1858, and Station TEM coincide. It was then noted that Triangulation Station, METINIC ISLAND, HOUSE CHIMNEY, 1910, and Station HOG, were also in coincidence. It was therefore assumed that a satisfactory means of obtaining correct scale and orientation for the preliminary compilation had been obtained and that it would be satisfactory to detail that portion of Metinic Island falling within the area of Survey No. T-8003 on the Map Drawing by tracing from the preliminary compilation projected and oriented, as outlined above. This method was accordingly used.

Examination showed the preliminary compilation to be on <sup>a</sup>scale of 1:9,688. The difference of the approximate central meridian shown on the compilation and the true meridian is about 21'.

A detailed Descriptive Report for the Southeast portion of Survey No. T-8003 follows.

Respectfully submitted:



Walter E. Schmidt  
Asst. Photogrammetric Engineer



Fred. L. Peacock  
Commander, C. & G. Survey



Mr. Benson

June 23, 1944

MEMORANDUM TO: MR. WITTMANN  
MR. BENSON

Subject: Planimetric maps T-8003, T-8004, T-8005,  
and T-8006

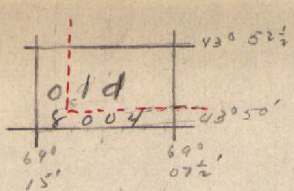
Combine the reports and publish these as three sheets;  
T-8003 to cover the area around Mosquito Harbor, T-8004  
to cover the entire Metinic Island Group, and T-8005  
to cover the Little Green Islands Group. Sheet No.  
T-8006 to be dropped. Notify Mrs. Johnson when this  
is done so that the sheet number can be changed on  
the books.

*to be dropped*

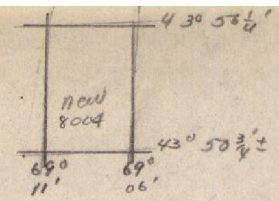
*will be an insert on T-8007*

B. G. Jones





**PART 4**  
**DATA RECORD**  
**MAP DRAWING SURVEY**  
**T- 8004**



Form T-1

*Metinic Is. & Vic.*  
Quadrangle (II): ~~Tenants Harbor (15') U.S.C.S.~~ Project No. (II): C.S. 272  
Sub-Project No. C.S. 272 - C  
Field Office: Chief of Party: *Henry O. Fortin*  
Air Photographic Party No. 2 ~~Fred. L. Peacock~~

Compilation Office: Chief of Party: Fred. L. Peacock  
Baltimore Photogrammetric Office

Instructions dated (II III): Copy filed in Descriptive  
April 1, 1942 Supplemental Instructions Report No. T- (VI)  
April 20, 1943 Additional Instructions Div. Photogram. Office Files  
March 4, 1944 (826-R.C.R.) Supplemental Instructions dated April 11, 1944  
Completed survey received in office: 23 June, 1944

Reported to Nautical Chart Section:

Reviewed: *19 Sept 45* Applied to chart No. 313 Reconst. Date: *8/10/45*  
Redrafting Completed: *6 Sept. 1946* 322 " *21 Oct. 1946*  
*5/3/48*

Registered: *18 May 1948* Published: *Nov. 1946*  
Compilation Scale: 1:9,700 Published Scale: 1:10000  
Scale Factor (III): 1.0309

Geographic Datum (III): N.A. 1927 Datum Plane (III): Mean Sea Level  
*Metinic 1850* *High Water*

Reference Station (III): ~~Topographic Station MET, 1944~~  
*43° 53' 36.843" (1137.1m) 69° 07' 35.592" (794.4m) Adjusted*  
Lat.: ~~43° 51' 42.13" (1299.9m)~~ Long.: ~~69° 08' 02.13" (47.6m)~~ *Adjusted*  
*Unadjusted*  
*(Field Computation)*

State Plane Coordinates (VI): *Maine, East Zone*

X = *334,843.97 ft* Y = *22,580.97 ft.*

Military Grid Zone (VI) *None*



PHOTOGRAPHS (III)

Metal Mounted

<u>Number</u>	<u>Date</u>	<u>Time</u>	<u>Scale</u>	<u>Stage of Tide</u>
7294	10/21/41	9:15 A.M.	1:10,000	7.6' above M.L.W.
7295	"	"	"	"
7296	"	"	"	"

Tide from (III): Predicted tide tables, Atlantic Ocean, 1941  
 Reference station - Portland, Maine, Sub-Station, Monehegan Island  
 Mean Range: 9.3' Spring Range: 10.6'

Camera: (Kind or source) U. S. Coast and Geodetic Survey nine lens camera  
 (focal length  $8\frac{1}{4}$ " ) All negatives are on file in the Washington Office.

Field Inspection by: Lieut. Comdr. Henry O. Fortin date: Season 1943  
 Season's Field Inspection Report previously submitted  
 Additional horizontal control established by Lieut. Dale E. Sturmer, May 24, 1944  
 Field Edit by: date:

Date of Mean High-Water Line Location (III): August 1943

(Washington Office)  
 Projection and Grids ruled by (III) J.T.B. - P.J.H. date: 10/29/43  
 " " " checked by: B.R.C. (Washington Office) date: 11/1/43  
 Projection Overlay checked by: R.M.B. (Washington Office) date: 11/2/43  
 Control plotted by: W. E. Schmidt date: 6/5/44  
 Control checked by: W. E. Schmidt date: 6/6/44

Radial Plot by: W. E. Schmidt date: 4/5/44  
 (See report on the preliminary compilation of Metinic Island)

Detached by: Traced from the Preliminary Compilation of date: 6/13/44  
 Metinic Island by: Ruth M. Whitson (interior and shore date: 6/16/44)  
 line - rough draft)  
 Reviewed in compilation office by: W.E. Schmidt date: 6/20/44

Elevations on Field Edit Sheet  
 checked by: date:

STATISTICS (III)

Land Area (Sq. Statute Miles):

~~PKB~~  $1\frac{1}{3}$

Shoreline (More than 200 meters to opposite shore):  $8\frac{1}{2}$  Statute Miles

Shoreline (Less than 200 meters to opposite shore): None

Number of Recoverable Topographic Stations established: ~~2~~ Three (3)

2 Positions determined on May 24, 1944 by rounds of theodolite directions by the Field Inspection Sub-Party. Third position by Air-photo compilation.

Number of Temporary Hydrographic Stations located by radial plot: ~~3~~ 41

Leveling (to control contours) - miles:

Roman numerals indicate whether the item is to be entered by,

(II) Field Party, (III) Compilation Party, or, (VI) the Washington Office.

When entering names of personnel on this record give the surname

and initials (not initials only).

Remarks:

this sheet combined with parts of T-8003, T-8005, and T-8006 to make new sheet T-8004. See review Figures in ink above apply to the new sheet T-8004.



## REFERENCES

### Reference A:

Descriptive Report covering the preliminary compilation of Metinic Island and vicinity, Coast of Maine, Project No. CS-272, and with special reference to the Chief of Party's introductory paragraph.

### Reference B:

Washington Office review of the preliminary compilation mentioned in Reference A.

### Reference C:

"History Report" of the Radial Plot and Compilation of the S. E. portion of Survey No. T-8003. (See descriptive report for Survey No. T-8003.)

26 CONTROL:

The horizontal control for Map Drawing Survey No. T-8004 consists of the two (2) stations, as follows:

Recoverable Topographic Station MET, 1944  
(Identified by F.I.P. Tem)

Recoverable Topographic Station HOG, 1944

The latter station falls just outside the detailed limits of the Map Drawing.

27 RADIAL PLOT:

The details of the radial plot are set forth in the Descriptive Report for the preliminary compilation of Metinic Island and vicinity (see Reference "A"), and in the "History" Report (see Reference "C") for the southeast portion of Map Drawing, Survey No. T-8003.

Attention is directed to an inherent weakness in the radial plot, due to the fact that there are only three over-lapping air photographs in the area, and that the flight line is approximately parallel to the long axis of Metinic Island. The middle photograph was subject to  $1\frac{1}{4}$  degrees of tilt. Numerous slim intersections were inevitable.

28 DETAILING:

(See References "A" and "C") *Parts 1 & 3 of this combined report*

Metinic Green Island, a portion of Hog Island, and the southern portion of Metinic Island as shown on the Map Drawing, were traced from the preliminary compilation by means of the vertical projector.

The position of the temporary hydrographic station No. 2105, as shown on the preliminary compilation of Metinic Island and vicinity, was transferred graphically to the Map Drawing from the line F.I.P. "Tem" - METINIC, 1858. The



28 DETAILING: (Continued)

positions of the F.I.P. and the temporary hydrographic station No. 2105 appearing on the preliminary compilation, were then made to coincide with their respective positions on the Map Drawing by means of the vertical projector. The area of S. E. Breaker was then traced from the preliminary compilation.

The charted features of Roaring Bull and Haddock Ledge have not been shown on the Map Drawing, because no field inspection data were furnished for their identification, and because their images were not visible on any of the photographs.

The area was inadequately covered by photography.

30 MEAN HIGH-WATER LINE:

(See the Descriptive Report for the preliminary compilation of Metinic Island and vicinity.) *Part 1 of this combined report*

31 LOW-WATER AND SHOAL LINES:

No part of the Mean Low-Water Line could be detailed with confidence, either from <sup>the</sup> field inspection data or by examination of the photographs. Pertinent notes have been shown on the Map Drawing for areas bordering the Mean High-Water Line.

For data concerning the shoal lines, see material under side headings Nos. 30 and 31 in the Descriptive Report for the preliminary compilation of Metinic Island and vicinity.

32 DETAILS OFFSHORE FROM THE HIGH-WATER LINE:

(See Descriptive Report for the preliminary compilation of Metinic Island and vicinity, mentioned under Reference "A")

The position of S. E. Breaker is very weak.  
(See side heading No. 28 in this report.)



33 WHARVES AND SHORE LINE STRUCTURES:

No Wharves or shore line structures appear within the area of the Map Drawing.

34 LANDMARKS, FIXED AIDS TO NAVIGATION, AND AERONAUTICAL AIDS:

There are no charted landmarks or fixed aids to navigation within the area of the Map Drawing.

No new landmarks, fixed aids to navigation, or aeronautical aids were recommended by the Field Inspection Sub-Party.

35 HYDROGRAPHIC CONTROL:

The hydrographic control appearing within the detail limits of the Map Drawing consists of nine temporary hydrographic stations, and recoverable topographic station MET, 1944, for which Form 524 has been submitted. (See Reference "C"). The position computations for the recoverable topographic station will be submitted with the Descriptive Report for the compilation of Map Drawing Survey No. T-8005. The positions of all the temporary hydrographic stations have been determined by the radial plot (see Reference "A"), and have been shown on the Map Drawing with  $2\frac{1}{2}$  mm. black acid ink circles, accompanied by their numbers and descriptions. The position of the recoverable topographic station has also been shown with a  $2\frac{1}{2}$  mm. black acid ink circle, accompanied by its name and description. The position of temporary hydrographic station No. 2105 is considered weak and should be used with caution by the operating hydrographic party.

*Nos 2106 - 2112 incl.  
2143 & 2144*

*Pt. 3 of combined report*

36 LANDING FIELDS:

There are no landing fields within the area of the Map Drawing.

37 GEOGRAPHIC NAMES:

No investigation of geographic names within the area of the Map Drawing was made by the Field Inspection

*814 ✓*



37 GEOGRAPHIC NAMES: (Continued)

Sub-Party. The geographic names shown on the Map Drawing have been taken from Chart No. 312 and the U. S. Geological Survey Tenants Harbor (15') quadrangle. They are as follows:

- ✓ Atlantic Ocean
- ✓ Hog Island
- ✓ Metinic Island
- ✓ Metinic Green Island
- ✓ S. E. Breaker

None of the names were disputed.

The geographic names Roaring Bull and Haddock Ledge have not been shown on the Map Drawing. (See side heading No. 28 in this report.)

*Falls west of new T-8004*  
*Falls south of new T-8004*

38 JUNCTIONS:

Satisfactory junctions of shoreline and interior planimetry were made with the Map Drawing for Survey No. T-8003 to the North, and the Map Drawing for Survey No. T-8005 to the East.

The meridian at Longitude  $69^{\circ} 15' 00''$ , which is the western detail limit of Map Drawing Survey No. T-8004, passes through an all water area. No junction, therefore, need be considered, of either shoreline or interior planimetry, with the Map Drawing for Survey No. T-5620, to the West.

The Atlantic Ocean is to the South of Map Drawing Survey No. T-8004, and therefore there is no junction with any contemporary survey to be considered.

39 RECOMMENDATIONS FOR FUTURE SURVEYS:

The positions of the features shown on the Map Drawing are believed to be within the limits of satisfactory accuracy, except for the area of S. E. Breaker, the location of which is approximate, and which should be investigated by the Hydrographic Party. The compilation is complete except for the

39 RECOMMENDATIONS FOR FUTURE SURVEYS: (Continued)

area just mentioned, and also for the areas of Haddock Ledge and Roaring Bull. (See side heading No. 28 in this report.) Attention is also called to the weakness in the radial plot mentioned under side heading No. 27 in the Descriptive Report of the S. E. portion of Map Drawing Survey No. T-8003, previously submitted.

44 COMPARISON WITH EXISTING TOPOGRAPHIC QUADRANGLES:

Tenants Harbor, (15') U.S.G.S., scale 1:62,500, edition of 1906, reprinted 1939. (See the Descriptive Report for the preliminary compilation of Metinic Island and vicinity, mentioned under Reference "A").

The area of Roaring Bull which appears on the quadrangle, has not been shown on the Map Drawing for reasons stated under side heading No. 28 of this report.

45 COMPARISON WITH EXISTING NAUTICAL CHARTS:

Chart No. 312, scale 1:40,000, published May 1943, corrected to August 24, 1943.

(See Descriptive Report for the preliminary compilation of Metinic Island and vicinity, mentioned under Reference "A").

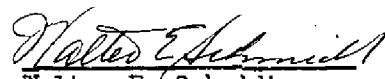
The areas of Roaring Bull and Haddock Ledge appearing on the chart, have not been shown on the Map Drawing for reasons stated under side heading No. 28 in this report.



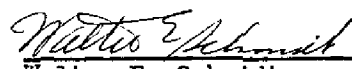
Respectfully submitted:  
June 20, 1944

  
Ruth M. Whitson  
Sr. Engineering Draftsman

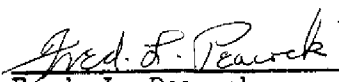
Transfer of Planimetric  
Details from the preliminary  
compilation to the Map Drawing  
and the Descriptive Report  
Reviewed by:

  
Walter E. Schmidt  
Asst. Photogrammetric Engineer

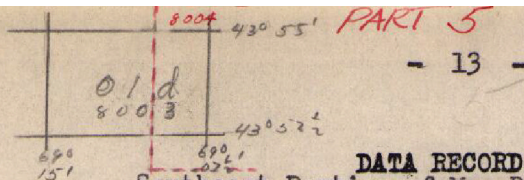
Supervised by:

  
Walter E. Schmidt  
Asst. Photogrammetric Engineer

Approved and Forwarded:  
June 23, 1944

  
Fred. L. Peacock  
Chief, Air Photographic Party No. 2





Form T-1

# DATA RECORD

Southeast Portion of Map Drawing, Survey No.

T-8003

*E. portion of T-8003 now becomes a part of new T-8004*

Quadrangle (II): ~~Tenants Harbor, (15')~~, U.S.G.S. Project No. (II): C.S. 272  
Sub-Project No. C.S. 272 C

Field Office:

Air Photographic Party No. 2

Chief of Party: *Henry O. Forten*  
~~Fred L. Peacock~~  
*Dale E. Sturmer*

Compilation Office:

Baltimore Photogrammetric Office

Chief of Party: Fred. L. Peacock

Instructions dated (II III):

April 1, 1942. Supplemental instructions

dated: April 20, 1943. Additional instructions

dated: March 4, 1944 (826-R.C.R.) Supplemental instructions dated: April 11, 1944

Completed survey received in office:

Copy filed in Descriptive  
Report No. T- (VI)

Reported to Nautical Chart Section:

Reviewed:

Applied to chart No.

Date:

Redrafting Completed:

Registered:

Published:

Compilation Scale: 1:9700

Published Scale:

Scale Factor (III): 1.0309

Geographic Datum (III): N. A. 1927

Datum Plane (III): Mean Sea Level

Reference Station (III): ~~MOSQUITO HEAD, 1934, r. 1943~~ *new T-8003*

Lat.: ~~43° 55' 59.10" (1823.9m)~~ Long.: ~~69° 12' 49.90" (1113.0m)~~ *Adjusted*

*Unadjusted*

*(Field Computation)*

State Plane Coordinates (VI):

X =

Y =

Military Grid Zone (VI)



PHOTOGRAPHS (III)  
(Metal Mounted)

<u>Number</u>	<u>Date</u>	<u>Time</u>	<u>Scale</u>	<u>Stage of Tide</u>
7294	10/21/41	9:15 A.M.	1:10,000	7.6' above M.L.W.
7295	10/21/41	9:15 A.M.	"	"
7296	10/21/41	9:15 A.M.	"	"

Tide from (III): Predicted tide tables, ATLANTIC OCEAN, 1941  
Reference station Portland, Maine - Sub-Station Monehegan Island  
Mean Range: 9.3' Spring Range: 10.6'

Camera: (Kind or source) U.S. Coast and Geodetic Survey nine lens camera  
(focal length 8 $\frac{1}{4}$ " ) All negatives are on file in the Washington Office.

Field Inspection by: Lieut. Comdr. Henry O. Fortin date: Season 1943  
Season's Field Inspection Report previously submitted  
Additional horizontal control established by Lieut. Dale E. Sturmer - May 1944  
Field Edit by: date:

Date of Mean High-Water Line Location (III): August, 1943

Projection and Grids ruled by (III) J.T.B.- P.H.J. date: 10/29/43

" " " checked by: B.R.C, date: 11/1/43  
Overlap checked by: R.M.B. date: 11/2/43  
Control plotted by: Donald M. Brant date: 12/3/43  
Additional control plotted by: W.E. Schmidt date: 6/5/44  
Control checked by: A. L. Goncharsky date: 12/11/43  
Additional control checked by: W. E. Schmidt date: 6/6/44

Radial Plot by: Walter E. Schmidt (See preliminary date: 4/5/44  
compilation of Metinic Island. Report attached hereto  
under separate cover.)

~~Details by:~~ date: 6/8/44 - 6/12/44  
Traced from preliminary compilation by: Ruth M. Whitson  
(interior shoreline, rough draft)  
Reviewed in compilation office by: W. E. Schmidt date: 6/14/44

Elevations on Field Edit Sheet  
checked by: date:

STATISTICS (III)

Land Area (Sq. Statute Miles):  $3/4$

Shoreline (More than 200 meters to opposite shore): 3 Statute Miles

Shoreline (Less than 200 meters to opposite shore): None

Number of Recoverable Topographic Stations established: 13

Number of Temporary Hydrographic Stations located by radial plot: 13

Leveling (to control contours) - miles:

Roman numerals indicate whether the item is to be entered by,

(II) Field Party, (III) Compilation Party, or, (VI) the Washington Office.

When entering names of personnel on this record give the surname  
and initials (not initials only).

Remarks:



26 CONTROL:

The horizontal control for the southeast portion of the Map Drawing for Survey No. T-8003 consists of four stations as follows:

Triangulation Station METINIC, 1858, 1934  
Triangulation Station METINIC ISLAND, HOUSE CHIMNEY, 1910 *lost*  
Recoverable Topographic Station HOG, 1944  
Recoverable Topographic Station MET, 1944  
" " " *Chy Ho, 1941 (d)*

The latter two stations fall outside the detailed limits of the Map Drawing.

27 RADIAL PLOT:

The details of the radial plot are set forth in the Descriptive Report for the preliminary compilation of Metinic Island and in the "History" Report immediately preceding this section of this report. Attention is directed to an inherent weakness in this radial plot, due to the fact that there are only three over-lapping air photographs in this area and that their flight line is approximately parallel to the long axis of Metinic Island. The middle photograph was subject to  $1\frac{1}{4}^{\circ}$  of tilt. Numerous slim intersections were inevitable.

28 DETAILING:

(See report of preliminary compilation of Metinic Island.) The detail for the southeast portion of the Map Drawing was obtained by tracing from the preliminary compilation of Metinic Island under the vertical projector.

30 MEAN HIGH-WATER LINE:

(See Descriptive Report for the preliminary compilation of Metinic Island.) *Part 1 of this combined report.*

31 LOW-WATER AND SHOAL LINES:

No part of a Mean Low-Water Line could be detailed with confidence, either by field inspection data or by examination of the photographs. For the data concerning



31 LOW-WATER AND SHOAL LINES: (Continued)

shoal lines, see the material under side headings 30 and 31, in the Descriptive Report for the preliminary compilation of Metinic Island.

32 DETAILS OFFSHORE FROM THE HIGH-WATER LINE:

(See the Descriptive Report for the preliminary compilation of Metinic Island.)

33 WHARVES AND SHORE LINE STRUCTURES:

(See Descriptive Report for the preliminary compilation of Metinic Island.) *Part 1. of this combined report.*

34 LANDMARKS, FIXED AIDS TO NAVIGATION, AND AERONAUTICAL AIDS:

There are no charted landmarks or fixed aids to navigation within the area of Metinic Island and vicinity.

No new landmarks, fixed aids to navigation, or aeronautical aids were recommended by the Field Inspection Sub-Party.

35 HYDROGRAPHIC CONTROL:

The hydrographic control appearing within the detail limits of the southeast portion of the Map Drawing consists of 13 temporary hydrographic stations, and one recoverable topographic station "Chimney, on Gray House," for which Form No. 524 has been submitted. All of the stations, the positions of which have been determined by radial intersection, have been shown on the Map Drawing with  $2\frac{1}{2}$  mm. black acid ink circles, accompanied by their numbers and descriptions, as furnished by the Field Inspection Sub-Party.

*No 2117  
2119-21 incl  
2134-42 incl  
+ 2145, 2146 added  
later  
Filed under T-8004.*

36 LANDING FIELDS:

There are no landing fields in the southeast portion of the Map Drawing.



37 GEOGRAPHIC NAMES:

The geographic names appearing on the southeast portion of the Map Drawing have been alphabetically compiled in a list and submitted herein. There were no disputed names. The facts concerning the geographic names as shown thereon have been fully brought out under side heading No. 37 in the Descriptive Report for the preliminary compilation attached hereto, under separate cover. 214 ✓

38 JUNCTIONS:

There are no junctions to be considered except those with other portions of Metinic Island. Since Metinic Island has been compiled as a unit and the procedure in tracing the separate parts to their respective Map Drawings is entirely similar and is being done by the same individual, no discrepancies are anticipated.

39 RECOMMENDATIONS FOR FUTURE SURVEYS:

The planimetry shown is believed to be within the limits of satisfactory accuracy and to be complete with respect to all detail needed for charting or the preparation of a planimetric map. However, attention is being called to the weakness in the radial plot mentioned under side heading No. 27.

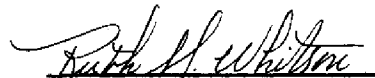
44 COMPARISON WITH EXISTING TOPOGRAPHIC QUADRANGLES:

(See Descriptive Report for the preliminary compilation of Metinic Island.) *Part 1 of this combined report.*


45 COMPARISON WITH EXISTING NAUTICAL CHARTS:

(See Descriptive Report for the preliminary compilation of Metinic Island.)


Respectfully submitted:  
June 14, 1944

  
Ruth M. Whitson  
Sr. Engineering Draftsman


Transfer of Planimetric details  
from the Preliminary Compilation  
to the Map Drawing, and Appendix  
Reviewed by:

  
Walter E. Schmidt  
Asst. Photogrammetric Engineer

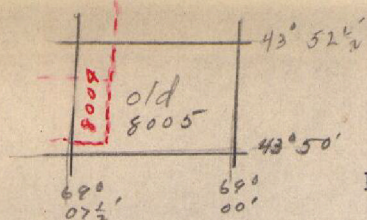
Supervised by:

  
Walter E. Schmidt  
Asst. Photogrammetric Engineer

Approved and Forwarded:  
June 16, 1944

  
Fred. L. Peacock  
Chief, Air Photographic Party No. 2





PART 6

Form T-1

DATA RECORD  
MAP DRAWING SURVEY No.

T-8005 (*Incorporated with 8004 under new T-8004*)

*Hog Is; The Rubble*

Quadrangle (II): ~~Tenants Harbor (15') U.S.G.S.~~

Project No. (II): C.S. 272

Sub-Project No. C.S. 272 C

Field Office:

Chief of Party: *Henry O. Fortin*  
~~Fred. L. Peacock~~

Air Photographic Party No. 2

*Date E. Hamer*

Compilation Office:

Chief of Party: Fred. L. Peacock

Baltimore Photogrammetric Office

Instructions dated (II III):

Copy filed in Descriptive  
Report No. T- (VI)

April 1, 1942 (Supplemental Instructions)

April 20, 1943 (Additional Instructions)

March 4, 1944 (826-R.C.R.)

April 11, 1944 (Supplemental Instructions)

Completed survey received in office:

Reported to Nautical Chart Section:

Reviewed:

Applied to chart No.

Date:

Redrafting Completed:

Registered:

Published:

Compilation Scale: 1:9700

Published Scale:

Scale Factor (III): 1.0309

Geographic Datum (III): N. A. 1927

Datum Plane (III): Mean Sea Level

Reference Station (III): ~~Topographic Station HOG, 1944~~

Lat.: ~~43° 52' 14.95" (461.4m)~~ Long.: ~~69° 07' 27.24" (608.2m)~~

~~Adjusted~~  
Unadjusted  
(Field Computation)

State Plane Coordinates (VI):

X =

Y =

Military Grid Zone (VI)

PHOTOGRAPHS (III)  
(Metal Mounted)

<u>Number</u>	<u>Date</u>	<u>Time</u>	<u>Scale</u>	<u>Stage of Tide</u>
7294	10/21/41	9:15 A.M.	1:10,000	7.6' above M. L. W.
7295	10/21/41	9:15 A.M.	1:10,000	7.6' above M. L. W.
7296	10/21/41	9:15 A.M.	1:10,000	7.6' above M. L. W.

The positions of all the photograph centers fall outside the detail limits of the Map Drawing

Tide from (III); Predicted tide tables - 1941 - Portland, Maine -  
Corrections to Monhegan Island

Mean Range: 9.3'

Spring Range: 10.6'

Camera: (Kind or source) U. S. Coast and Geodetic Survey nine lens camera (focal length 8 1/2"). All negatives are on file in the Washington Office.

Field Inspection by: Lieut. Comdr. Henry O. Fortin      date: Season 1943

Season's Field Inspection Report previously submitted

Additional horizontal control established by: Lieut. Dale E. Sturmer, date: May 24, 1943

Field Edit by:

date:

Date of Mean High-Water Line Location (III): August 1943

(Washington Office)

Projection and Grids ruled by (III) J.T.B. - P.J.H.      date: 10/29/43

checked by: B.R.C. (Washington Office) date: 11/1/43

Overlay checked by: R.M.B.(Washington Office)date: 11/2/43

Control plotted by: W. E. Schmidt date: 6/7/44

Control checked by: W. E. Schmidt date: 6/7/44

**Radial Plot by:** W. E. Schmidt (See report on the  
                    **compilation** of Metinic Island)          **date:** 4/5/44

~~Detained by~~ Traced from the Preliminary Compilation of date: 6/20/44

Metinic Island by: Ruth M. Whitson (interior and shore  
line- rough draft)  
Reviewed in compilation office by: W. E. Schmidt date: 6/21/44

Elevations on Field Edit Sheet  
checked by:

date:



STATISTICS (III)

Land Area (Sq. Statute Miles); 0.02

Shoreline (More than 200 meters to opposite shore): 1 1/5 Statute Miles

Shoreline (Less than 200 meters to opposite shore): None

Number of Recoverable Topographic Stations established: \*1 - Position determined on May 24, 1944 by rounds of theodolite directions by the Field Inspection Sub-Party

Number of Temporary Hydrographic Stations located by radial plot: 4

Leveling (to control contours) - miles;

Roman numerals indicate whether the item is to be entered by,

(II) Field Party, (III) Compilation Party, or, (VI) the Washington Office.

When entering names of personnel on this record give the surname and initials (not initials only).

Remarks:

\*Position computations ~~submitted herein~~

sent to Geodesy.  
19 Sept 45



## REFERENCES

### Reference A:

Descriptive Report covering the preliminary compilation of Metinic Island and vicinity, Coast of Maine, Project C.S. 272, and with special reference to the Chief of Party's introductory paragraph.

### Reference B:

Washington Office review of the preliminary compilation mentioned in Reference A.

### Reference C:

"History" Report of the Radial Plot and  
Compilation of the S. E. portion of Survey No.  
T-8003. (See Descriptive Report for Survey No.  
~~T-8003.~~)  
T-8004



Compilation Report T-8005  
(now become <sup>new</sup> T-8004)

26 CONTROL:

(See Reference C)

The horizontal control appearing on Map Drawing, Survey No. T-8005 consists of the two Recoverable Topographic Stations HOG, 1944, and MET, 1944, (identified by F.I.P. "Tem"). The latter station falls outside the western detail limit of the Map Drawing. Both stations have been shown thereon with  $2\frac{1}{2}$  mm. black acid ink circles, while the F.I.P. has been shown with a small black acid ink square. *i.e., T-8005 (abandoned)*

27 RADIAL PLOT:

The details of the radial plot are set forth in the Descriptive Report for the preliminary compilation of Metinic Island and vicinity (Reference A), and in the History Report (Reference C), for the southeast portion of Map Drawing, Survey No. T-8003.

Attention is directed to an inherent weakness in the radial plot, due to the fact that there are only three over-lapping air photographs in the area, and that the flight line is approximately parallel to the long axis of Metinic Island. The middle photograph was subject to  $1\frac{1}{4}$  degrees of tilt. Numerous slim intersections were inevitable.

28 DETAILING:

(See References A, B, and C)

All of The Nubble and a portion of Hog Island, as shown on the Map Drawing, were traced from the preliminary compilation of Metinic Island and vicinity, by means of the vertical projector.

30 MEAN HIGH-WATER LINE:

(See Reference A)

31 LOW-WATER AND SHOAL LINES:

No part of the Mean Low-Water Line could be detailed with confidence, either by the field



31 LOW-WATER AND SHOAL LINES: (Continued)

inspection data or by examination of the photographs.

For data concerning the shoal lines, see material under side headings Nos. 30 and 31 in the Descriptive Report for the preliminary compilation of Metinic Island and vicinity.

32 DETAILS OFFSHORE FROM THE HIGH-WATER LINE:

(See Reference A)

33 WHARVES AND SHORE LINE STRUCTURES:

There are no wharves or shore line structures within the area of Survey No. T-8005.

34 LANDMARKS, FIXED AIDS TO NAVIGATION, AND AERONAUTICAL AIDS:

There are no charted landmarks or fixed aids to navigation within the area of Survey No. T-8005.

No new landmarks, fixed aids to navigation, or aeronautical aids were recommended by the Field Inspection Sub-Party.

35 HYDROGRAPHIC CONTROL:

The hydrographic control appearing within the detail limits of the Map Drawing consists of 4 temporary hydrographic stations and recoverable topographic station HOG, 1944, for which Form 524 has been submitted (See Reference C). The position computations for recoverable topographic stations HOG, 1944, and MET, 1944, are submitted herein.

2113  
2114  
2115  
2116  
sent to  
Geodesy

19 Sept 45

The positions of all the temporary hydrographic stations have been determined by the radial plot (See Reference A), and have been shown on the matte side of the Map Drawing with  $2\frac{1}{2}$  mm. black acid ink circles, accompanied by their names and descriptions, as selected by the Field Inspection Sub-Party. The position of the Recoverable Topographic Station has also been



35 HYDROGRAPHIC CONTROL: (Continued)

shown with a  $2\frac{1}{2}$  mm. black acid ink circle, accompanied by its name and description.

36 LANDING FIELDS:

There are no landing fields within the area of Survey No. T-8005.

37 GEOGRAPHIC NAMES:

No investigation of geographic names within the area of the Survey was made by the Field Inspection Sub-Party. The geographic names shown on the Map Drawing for Survey No. T-8005 have been taken from the nautical Chart No. 312 and the United States Geological Survey Tenants Harbor (15') quadrangle. They are as follows: Atlantic Ocean, Hog Island, and The Nubble. None of the names were disputed. 814 ✓

38 CABLE CROSSING AREAS:

The cable crossing area appearing on the north-east portion of the Map Drawing has been traced from nautical Chart No. 225 which was enlarged by means of the vertical projector, bringing into coincidence projection lines common to the chart and the Map Drawing.

*Does not fall  
in area of  
T-8004.*

39 JUNCTIONS:

Satisfactory junction of details was made with Map Drawing, Survey No. T-8004 to the West.

The only junction of details to be considered with Map Drawing, Survey No. T-8006 to the North, is that of a cable crossing area. A satisfactory junction has been accomplished.

The Atlantic Ocean is to the South and East of Survey No. T-8005. There is no contemporary survey to the South. Map Drawing, Survey No. T-8026 is to the East. No junction of details need be considered, because it passes through an all water area, except for a cable crossing area. A satisfactory junction with such detail has been made.



40 RECOMMENDATIONS FOR FUTURE SURVEYS:

The positions of the planimetric details shown on the Map Drawing are believed to be within the limits of satisfactory accuracy. The compilation is complete with respect to all detail needed, either for charting or for the preparation of a planimetric map. However, attention is being called to the weakness in the radial plot mentioned under side heading No. 27 of this report.

44 COMPARISON WITH EXISTING TOPOGRAPHIC QUADRANGLES:

(See Reference A)

45 COMPARISON WITH EXISTING NAUTICAL CHARTS:

(See Reference A).



Respectfully submitted:  
June 20, 1944

Ruth M. Whitson  
Ruth M. Whitson  
Senior Engineering Draftsman

Transfer of Planimetric Details  
from the Preliminary Compilation  
to the Map Drawing and Descriptive  
Report Reviewed by:

Walter E. Schmidt  
Walter E. Schmidt  
Asst. Photogrammetric Engineer

Supervised by:

Walter E. Schmidt  
Walter E. Schmidt  
Asst. Photogrammetric Engineer

Approved and Forwarded:  
June 23, 1944

Fred. L. Peacock  
Fred. L. Peacock  
Chief, Air Photographic Party No. 2



# GEOGRAPHIC NAMES

Survey No.

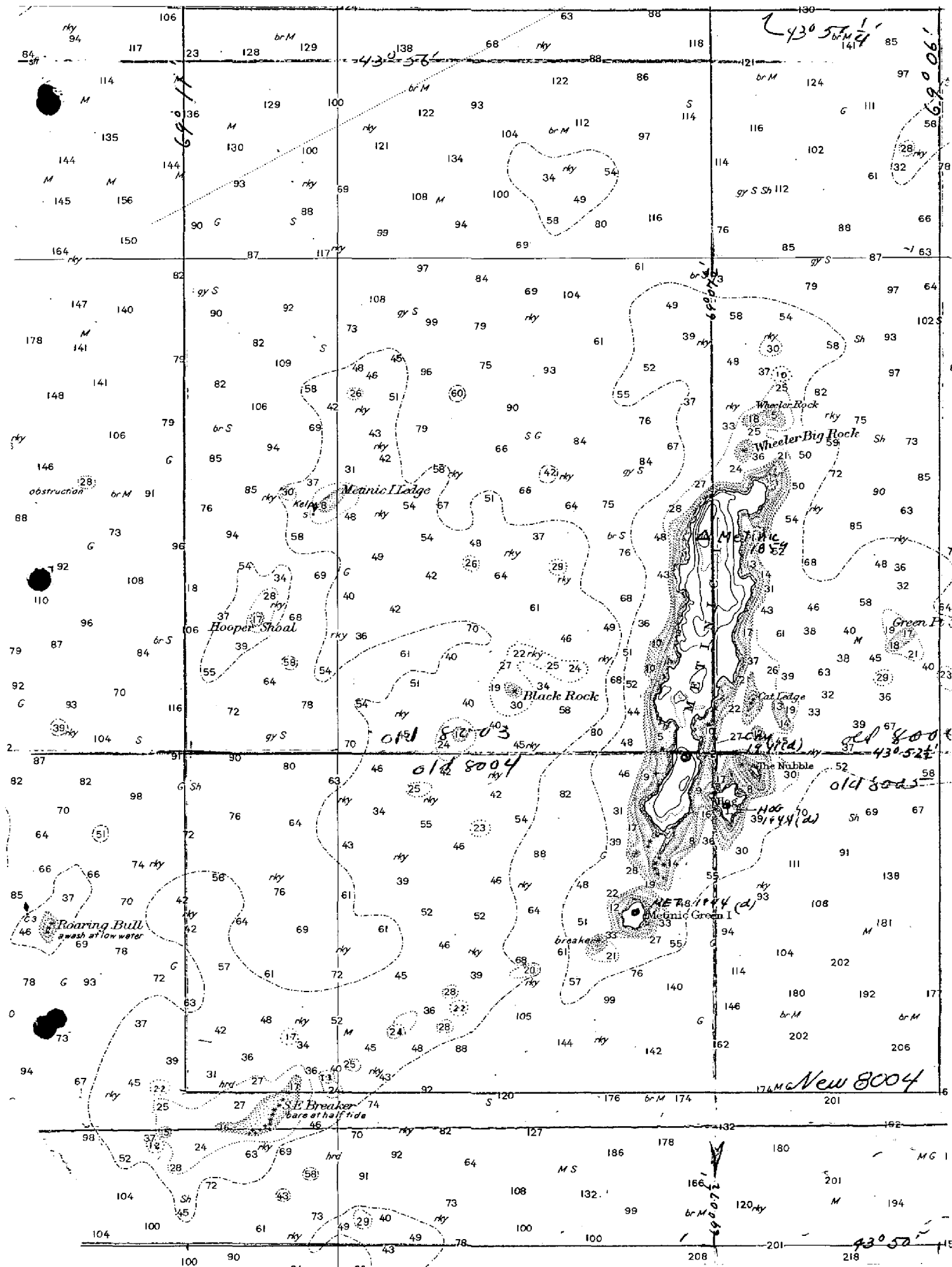
T-8004

Name on Survey

	A	B	C	D	E	F	G	H	K	
<u>Atlantic Ocean</u>										1
<u>Maine</u>										2
										3
<u>Metinic Island</u>										4
<u>Metinic Green Island</u>										5
<u>Black Rock</u>										6
<u>Cat Ledge</u>	<i>Feature not shown, see Review Report.</i>									7
<u>Hog Island</u>										8
<u>Southeast Breaker</u>										9
<u>The Nabble</u>										10
<u>Wheeler Big Rock</u>										11
<u>Two Bush Channel</u>										12
										13
										14
										15
										16
										17
										18
										19
										20
										21
										22
										23
										24
										25
										26
										27

*Names underlined in red represent  
by L. Heck on 9/17/46*







DIVISION OF PHOTOGRAMMETRY  
Review Report of  
Planimetric Map Manuscript T-8004

Subject numbers not used in this review report have been adequately covered in other parts of the descriptive report or do not apply.

28. FIELD INSPECTION AND DELINEATION

Photographs covering the area were taken at nearly high water so that outer limits of ledge, off-shore rocks, and ledges could not be well interpreted. The field inspection party delineated the shoreline too far seaward and the compiler used that line on the map manuscript. Because of these conditions, it was necessary to correct the shoreline in many places. Changes have been made in red on the map manuscript.

Final delineation of rocks and ledges will be taken from the hydrographic survey.

(See descriptive report T-5622 for an explanation and analysis of field inspection errors.)

42. COMPARISON WITH PREVIOUS TOPOGRAPHIC SURVEYS

T-960	1/20000	1864
-------	---------	------

The present survey supersedes the older survey except for rocks, outer limits of ledges and reefs and contours.

43. COMPARISON WITH CONTEMPORARY HYDROGRAPHIC SURVEYS \*

The new surveys for this area are not available.

NOTE for reviewer of Hydrographic Surveys:

Any sounding lines based on the previous position of signal No. 2105 on Southeast Breaker should be changed to be consistent with the present position on map manuscript T-8004.

Shoreline on the Hydrographic Survey should be changed to agree with the corrected shoreline on map manuscript T-8004.

Cat Ledge has been taken off the map manuscript because its position was only approximate.

*The map manuscript has been applied to reconstruction chart 313*

Reviewed by: *prior to review*

Under the direction

*Jack Rahn*  
\_\_\_\_\_  
Jack Rahn, 19 Sept, 1945

*R. M. Berry* ✓  
\_\_\_\_\_  
Chief, Review Section *K.H.M.*

\* H-6982 (1944)  
H-7054 (1945)

*75 May, 1948*



APPROVED BY:

S. V. Griffin, for D. B. Jones,  
Technical Assistant to the  
Chief, Div. of Photogrammetry

H. C. Edmonson  
Chief, Nautical Charts Branch,  
Division of Charts

K. T. Adams  
Chief, Div. of Photogrammetry

W. M. Scaife  
Chief, Div. of Coastal Surveys



## NAUTICAL CHARTS BRANCH

SURVEY NO. T8004

### Record of Application to Charts

[illegible]

M.2168-1

A basic hydrographic or topographic survey supersedes all information of like nature on the uncorrected chart. Give reasons for deviations, if any, from recommendations made under "Comparison with Charts" in the Review.