

2664

2664

Form 504

U. S. COAST AND GEODETIC SURVEY

DEPARTMENT OF COMMERCE

DESCRIPTIVE REPORT

Type of Survey *Topographic*
Field No. _____ Office No. *2664*

LOCALITY

State *Georgia*
General locality *Waynes*
Locality *Belfast Rivers*
Saint Catharine Sound
1904

CHIEF OF PARTY

Stelman Forney

LIBRARY & ARCHIVES

DATE _____

2664

83
STA
2664
1904

Treasury Department,
U. S. COAST AND GEODETIC SURVEY.

O. N. Zimmern
Superintendent.

State: *Pa.*

U. S. C. & G. SURVEY,
LIBRARY AND ARCHIVES,
FEB 24 1905
Acc. No.

DESCRIPTIVE REPORT.

Topographic Sheet No. *2664*

LOCALITY:

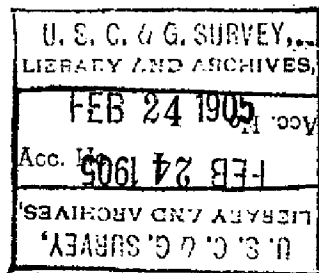
Medway & Belfast Rivers
Sunbury to Belfast

1904

CHIEF OF PARTY:

S. FORNEY, Asst.

2664



Descriptive Report

Medway and Belfort Rivers
Georgia

Scale 1/10,000

1904

The Belfort River flows in to Dutchman's Bay thence in to the Medway River thence in to Saint-Catherines Sound.

In front of the settlement at Belfort there is a bluff line ranging in height from nine to ten feet above mean high water, which extends 740 meters West and 1050 meters East and South of Belfort. The shores and surrounding country beyond this bluff line is comprised of sub merged salt marshes, until it reaches Stenberg where there is a plateau 9 feet above mean high water, on which is located the old settlement of Stenberg, now comprised of three houses and one barn (this settlement was once the site of Laramack) The bluffs and high ground are covered

with a dense growth of Pine and Live Oak timber. The shores at the outer edge of the marsh line are of deep sticky mud that is impossible to walk over. A person attempting it would go in to the mud up to the armpits. The entire country inside of the shore line is a vast submerged salt-marsh that apparently has no bottom.

About the time my survey was completed. The Hilton Dodge Lumber Company were making preparations to build an up to date Saw Mill and construct a wide gauge rail road to connect with the Atlantic Coast-Rail road. These improvements will change the features of the country. Nearly all of the timber shown on the sheet in the vicinity of Belfast and Salina will be cleared off. Up to the time of the beginning of this enterprise there was quite an extensive business done in Turpentine and resin there being a distillery at Belfast for reducing the gum as it comes from the trees.

The Survey was based on a Plane Table triangulation brought up from three triangulation (1858) Stations in Saint-Catherine's Sound and the Medway River. The projections were shifted 1st to the East - it being too far West to get the work in the vicinity of Belfast on the sheet. Having on hand a great deal of work including my Petruca River Topographical Sheet, and with the approval of the Act. in Charge I did not ink the work on the Belfast-River Sheet. But indicated the character of the country by writing in pencil, "Submerged Salt-Marsh". The circles on the sheet are Plane Table determinations developed by the triangulation, and are marked by platform signals, this had to be constructed to fulfil the Plane Table.

Respectfully Submitted
Wm. J. Perry
Act. C. S. J. Perry

2664

Department of Commerce and Labor

Coast and Geodetic Survey,

C. H. Littenmann Superintendent

83
STA.
2664
1904

U. S. DEPARTMENT OF COMMERCE
LIBRARY AND ARCHIVES

SEP 19 1904

Acc. No.

Duplicate.

Description of Topographic Signals,

Plane Table Triangulation

of

Mulroy and Belfast Rivers

Saint-Catharines Sound
Georgia

March and April
1904.

Stehman Torrey,

Acting S. S. Survey,

Chief of Party.

2664
2664
2664
2664

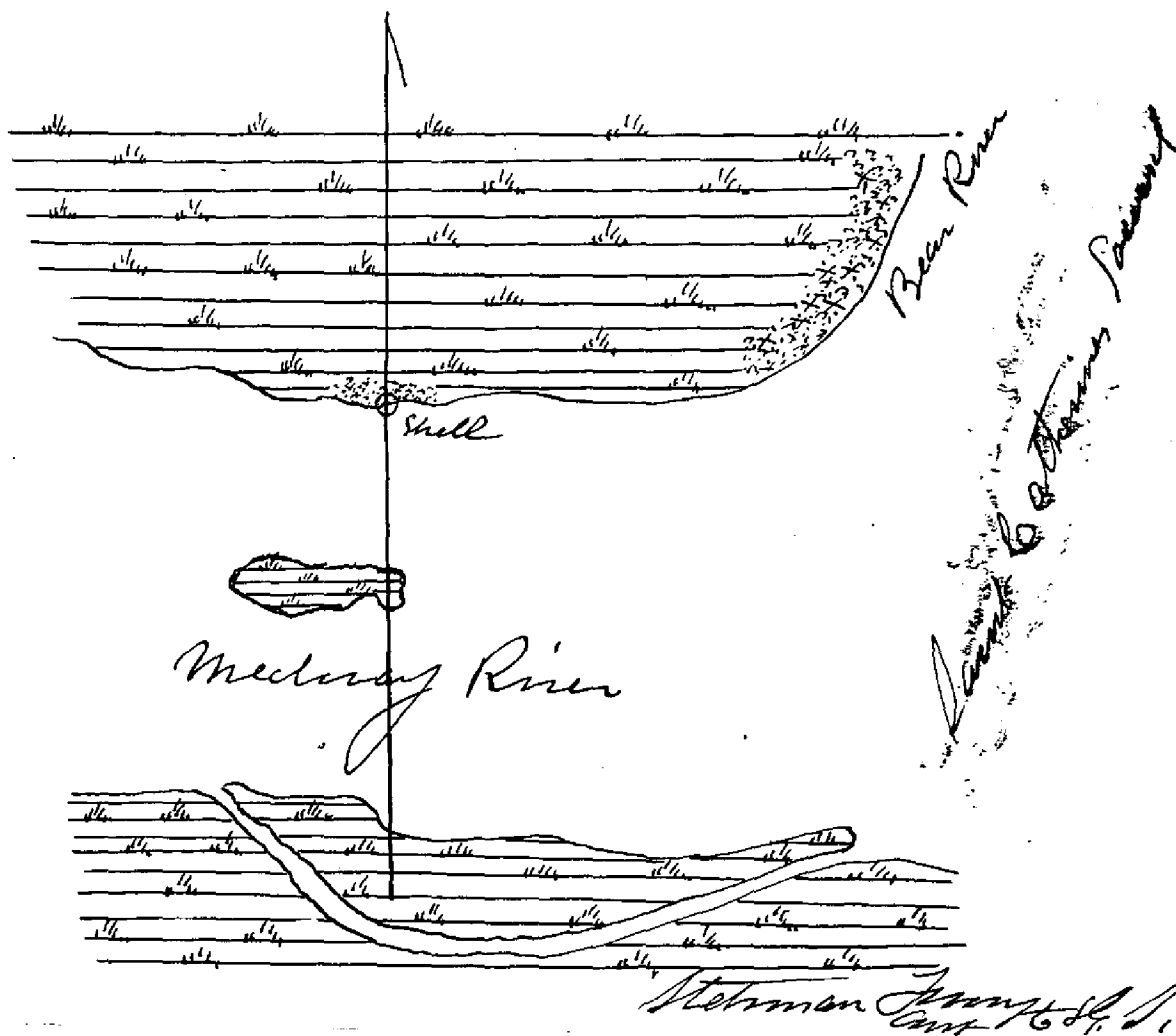
Duplicate.

Department of Commerce and Labor

C. H. Sumner,

Shell, Topogⁿ Signal, Bryan County, Georgia, Feb^r 25, 1904
This station is on the north or left-hand side of the
Medway River, near Saint-Catherine's Sound
Bryan County, Georgia, on a shell Bank backed
by an extensive marsh.

The station is marked by a yellow Pine
Stub, 2" diameter set into the ground 2 feet; on
this rests a yellow Pine Pole 7" diameter 16
feet long with red and white ~~orange~~ flags, sup-
ported by four brass corks and stakes. The
usual notice of warning was placed on the
pole.



Stationer
C. H. Sumner

Duplicate.

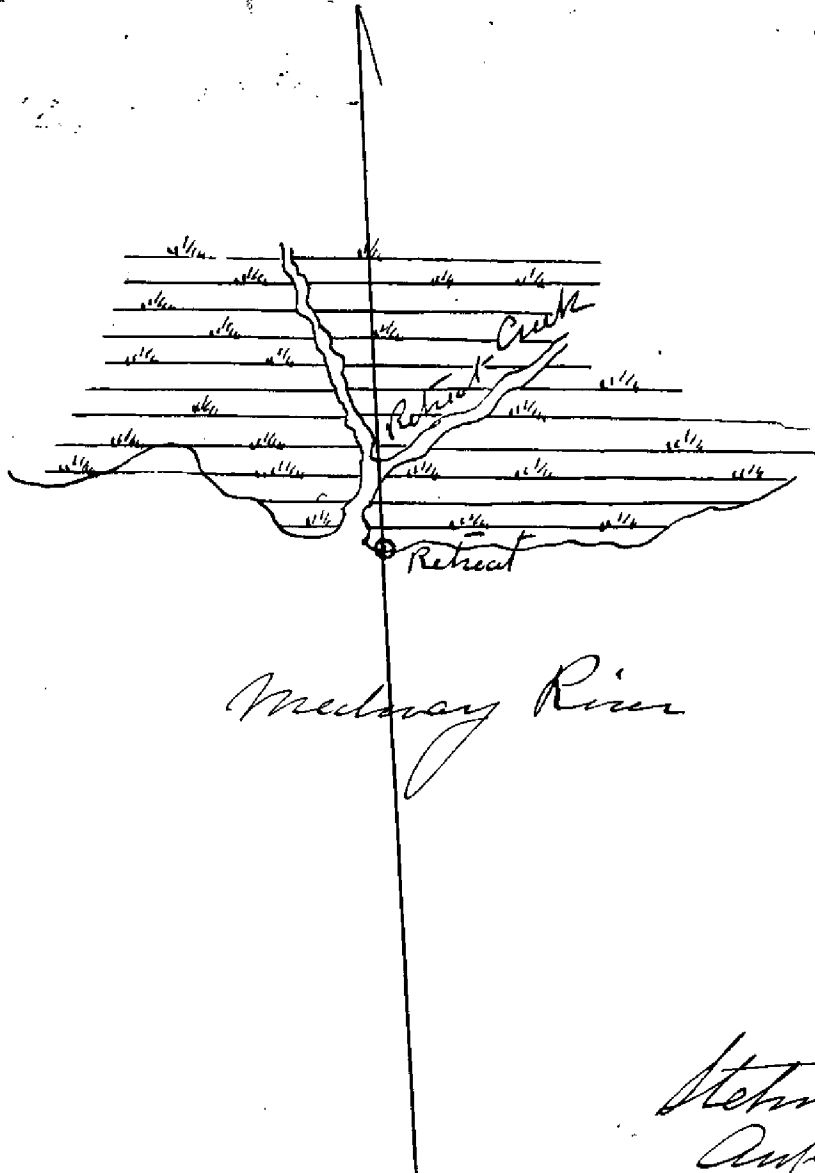
2
2

Department of Commerce and Labor

Retreat, Bryan County Ga. February 25th 1904

This station is on the left-hand or Northern Shore of the Medway River just east of the entrance to Retreat Creek, on a bank of shells at High Water Mark

The station is marked with a Yellow Pine Stake 2" in diameter 16 feet long with white and red flags. Supported by four braces and cross-ties and staves the usual notice of mooring was tacked on the pole.



Stephen J. Jones
Asst. C. S. Jones

Duplicate

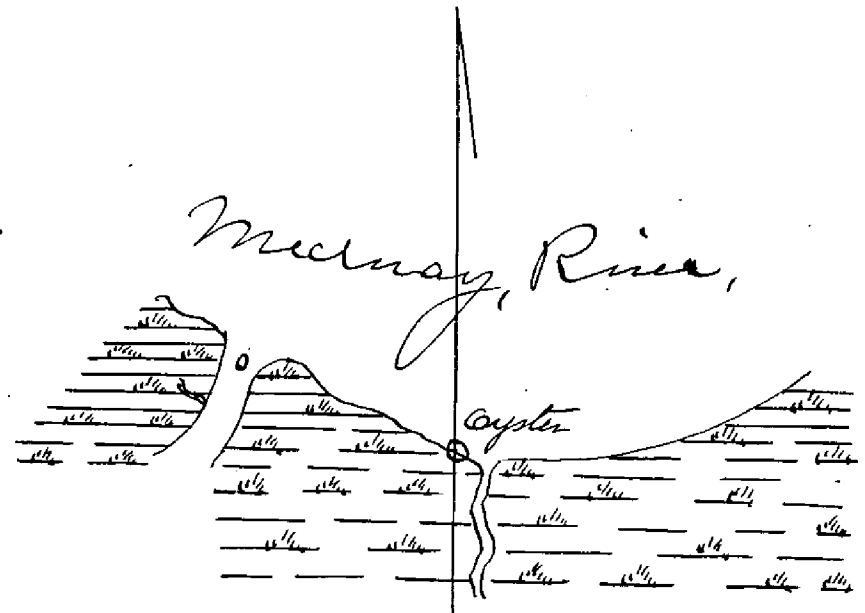
Department of Commerce and Labor

C. S. Jolley

Oyster, Topog. Signal Liberty County Ga. Feb. 26, 1904

This station is located on an oyster shell bank on the South or right-hand shore of the Mearns River near high water mark and on the West side of the entrance to a small creek.

The station is marked by a yellow painted slab 2" diameter set in to the ground 2 feet, on top of this rests a pole 16 feet long, 2" in diameter, with a red and white flag, supported by 4 braces with cross ties and stakes. The usual notice of warning was tacked to the pole.



Stetman Jolley
Asst. C. S. Jolley

Duplicate.

2 3 4

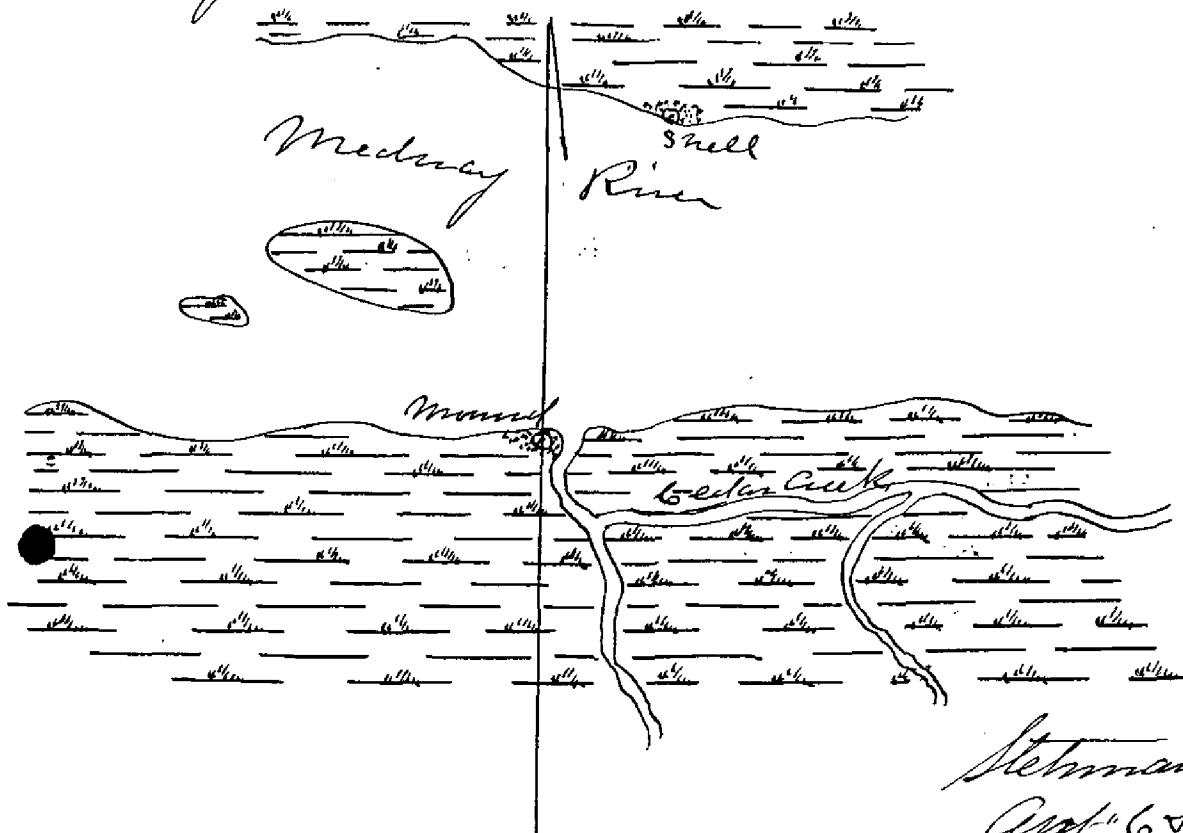
Department of Commerce and Labor

4

C. H. Jolley.

Mound, Topping Signal, Liberty County, Ga. February 26, 1904

This station is located on a shell bank 10 metres from high water on the south or right-hand shore of the Medway River and on the East-side of the entrance to the large creek that connects Medway River with Cedar Creek. The station is marked by a yellow Pine stake 2" in diameter let in to the ground 2 feet - on this rests a yellow Pine pole 16 feet long 2" in diameter with white & red flag, supported by 4 beams with cross ties and stakes. The usual printed notice of Warning was tacked to the pole.

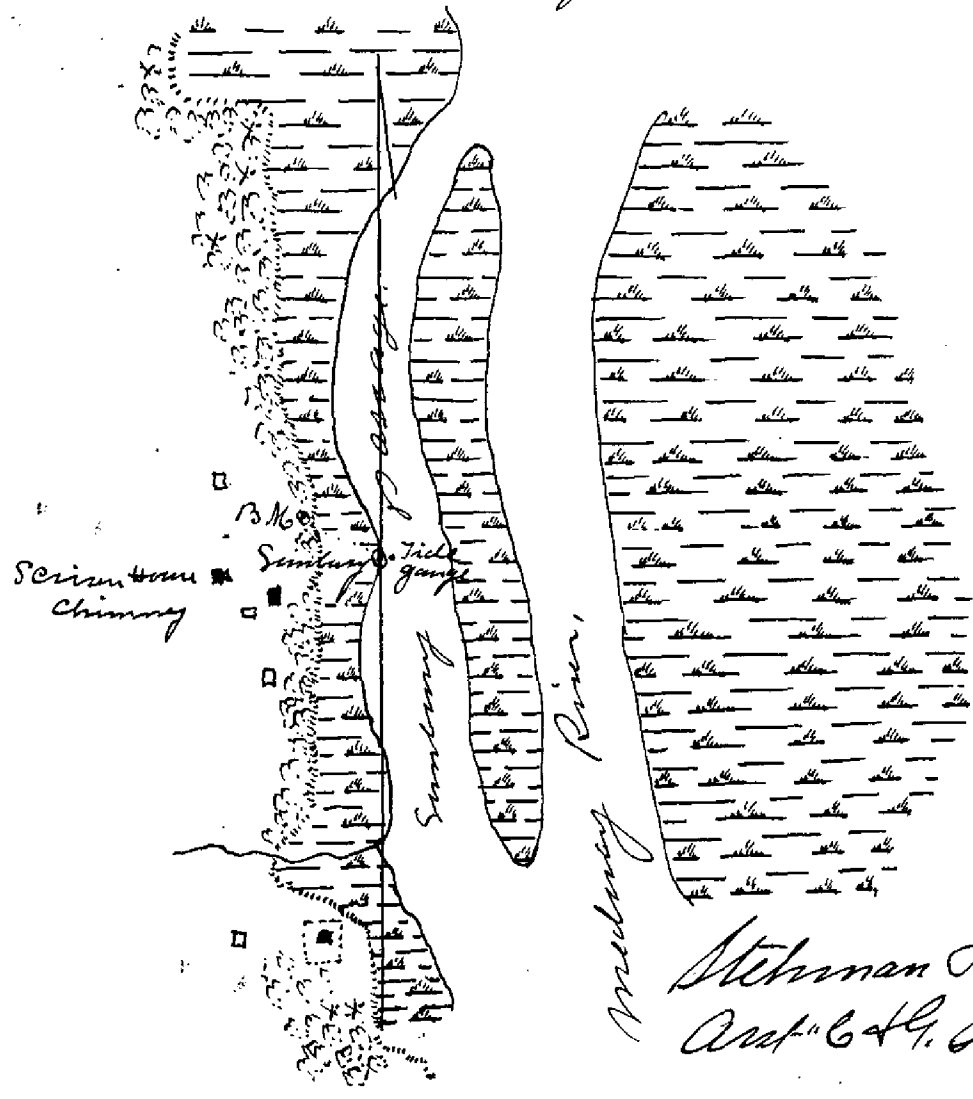


Stetman Jolley
Capt. C. H. Jolley

Explicit
Department of Commerce and Labor
Coast Survey

Savannah Signal, Liberty County, Ga. Feb 29, 1904

This station is located on the Stoneat-High Water mark in front of the village of Sumbury on the west side of Sumbury Passage of the Mud Key River. The village is comprised of four towns and one town, and in early days was the end of Savannah Ga. Signal is comprised of a Yellow Pine pole 2 in diameter 16 feet long nailed to an old wharf pile, it has a red and white flag on it. The usual notice of warning was placed on the pole.



Stephan Horney
Asst. Coast Survey

Duplicate.

6
6

Department of Commerce and Labor

C & G Survey

Bank Topog. Signal. Liberty Sound Ga. Feb. 29, 1904.

This station is located on the right-hand or South shore of the Medway River, on a bank of Oyster Shells, and is the first signal down river from the first large creek below Surrency. The station is surrounded by marsh. The station is marked with a Yellow Pine stub 3" diameter set into the ground 2 feet; on top of this rests a yellow Pine Pole 3" diameter 16 feet long supported by 4 braces with cross ties, and stays, and has a red and white flag on its top. The usual printed notice of Warning was tacked to the pole.



Duplicate

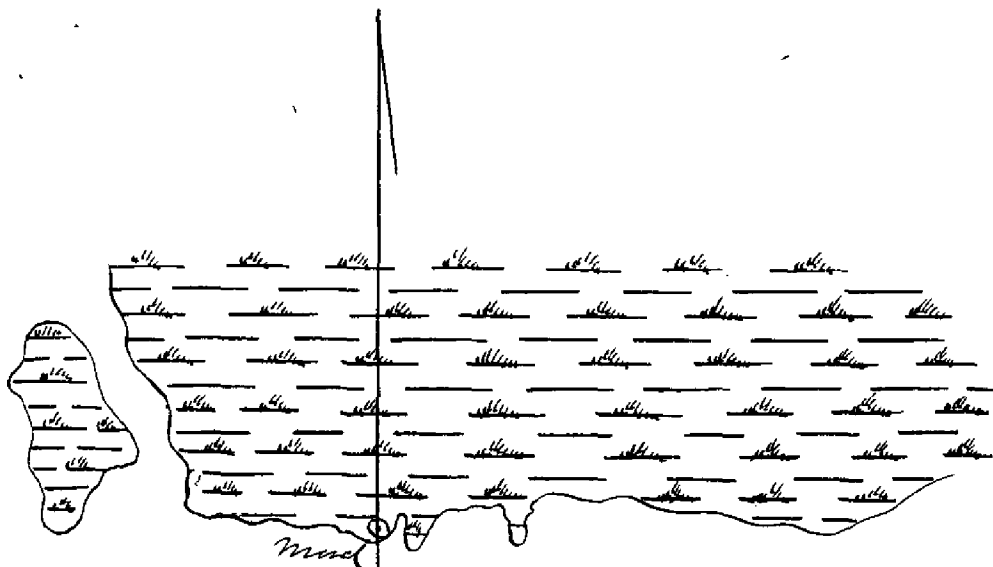
7
7

Department of Commerce and Labor

C. S. Jones.

"Mind Topy" Signal, Glynn County - Ga. March 1st 1904

This station is located on the left-hand or northern shore of the Medway River on a mud bank back of scattered oyster shells on the shore, and 300 metres down river from the mouth of a passage that runs through between the main land and a small island in the Medway River. The signal is comprised of a yellow Pikes pole 16 feet long let into the mud six feet and supported by 4 posts with cross-ties and stakes. The usual notice of warning was tacked on to the pole,



Medway River

Stetman Jones
Comd. C. S. Jones

Duplicate

Department of Commerce and Labor

C. H. Jerny,

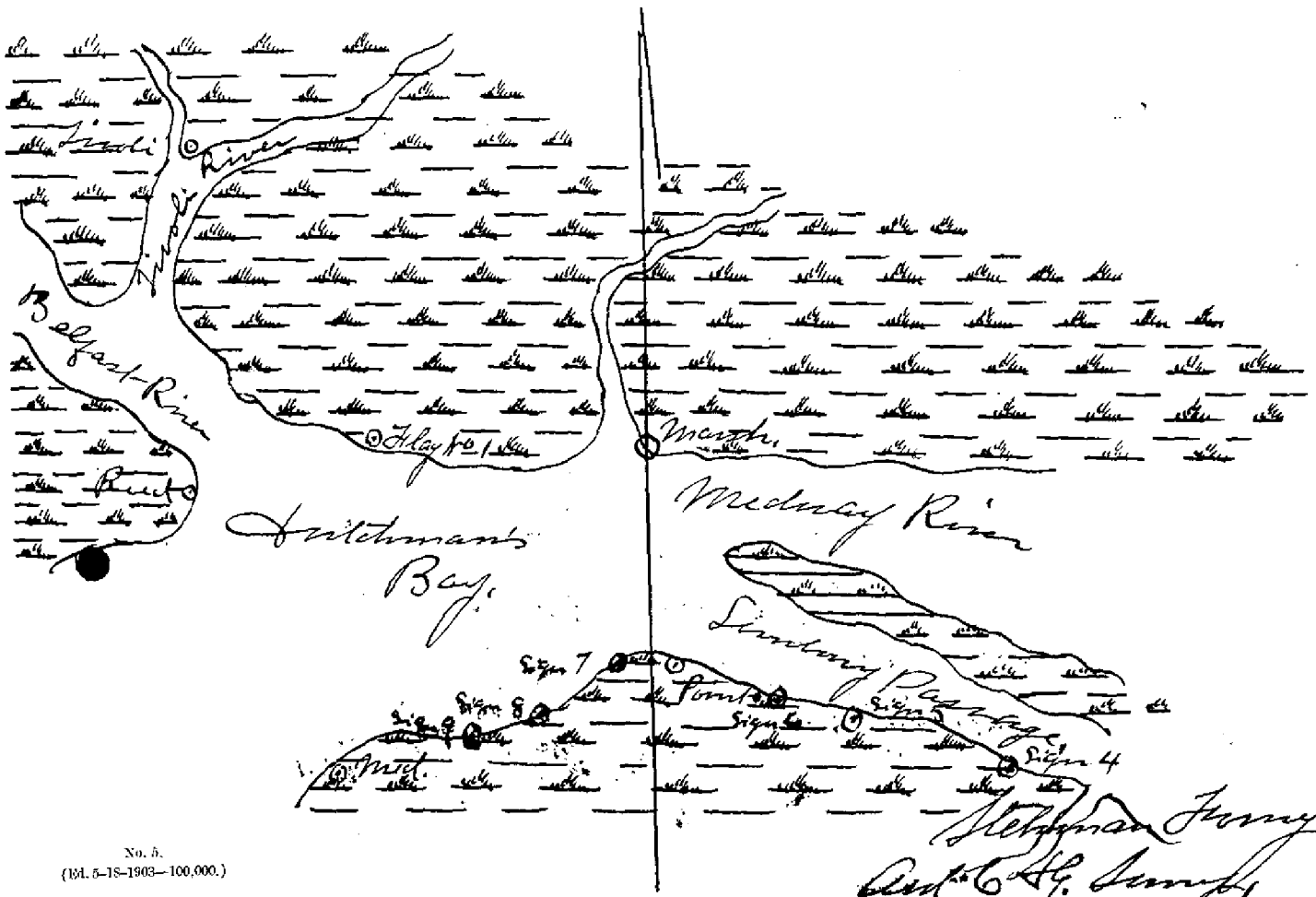
8

8

Marsh Topping "Sig" Bryan County, - March 3^d - 1904

This signal is comprised of 4 posts set in to the mud about 8 feet, braced with diagonal and cross braces. A pole 3 in in diameter 16 feet long was sunk in to the mud, a platform of boards was placed on the braces to stand on above the water to observe from. The pole has a red and white flag and the usual notice was tacked to the pole.

Signal is located on the edge of the marsh on the left-hand or north shore of Medway River 9/4th just east of the mouth of a creek. The



J. J. J. J.
Duplicate.

Department of Commerce and Labor

9

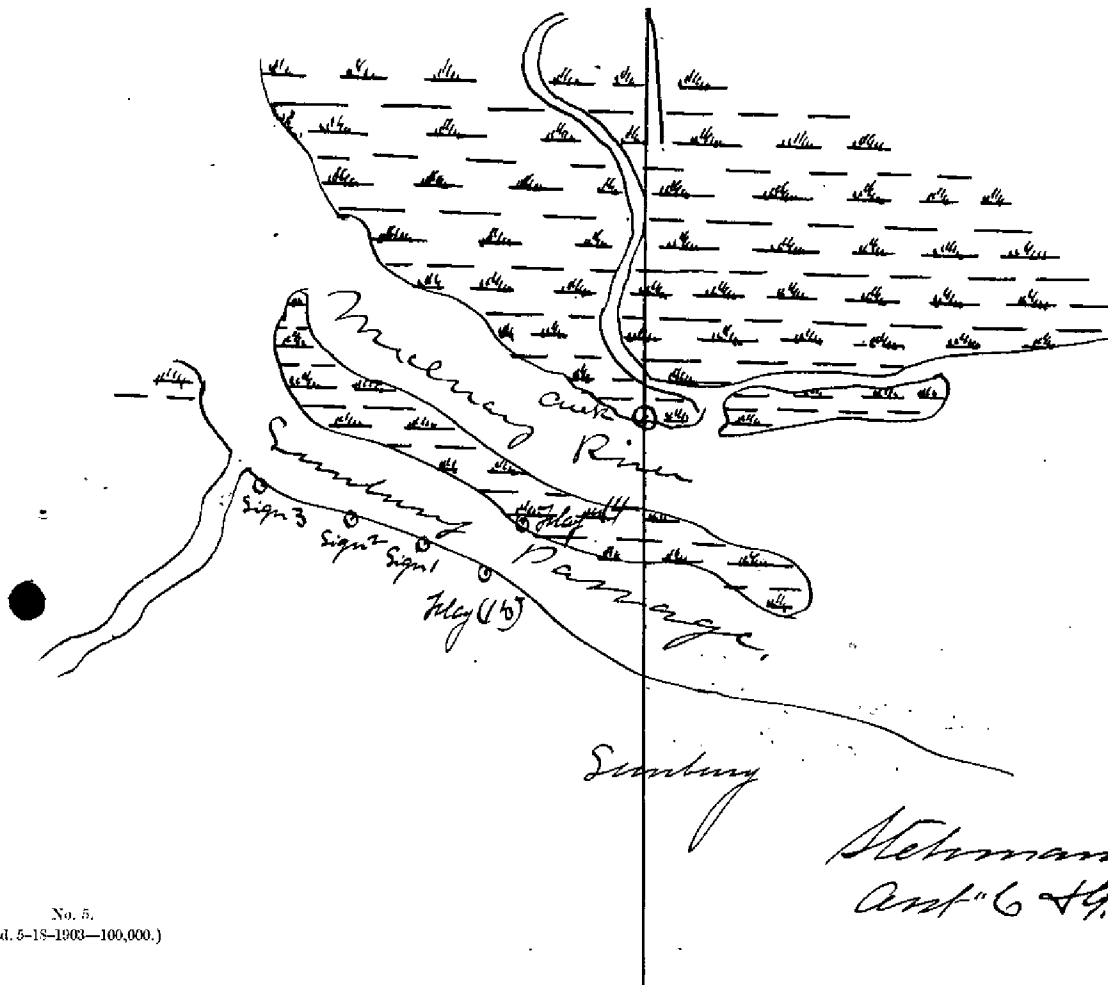
9

Creek Topog. Signal: Bryan Canal - Ga., March 3, 1904

Platform Signal.

This signal is comprised of 4 posts let-in to the
about 7 feet and braced with diagonal and cross
braces. The pole is a Yellow Pine 3 in diameter and
16 feet long let-in to the wood about 5 feet and
nailed to the diagonals and cross ties. This pole has
a white flag red and white fringe. The usual
notice of warning is attached to the pole.

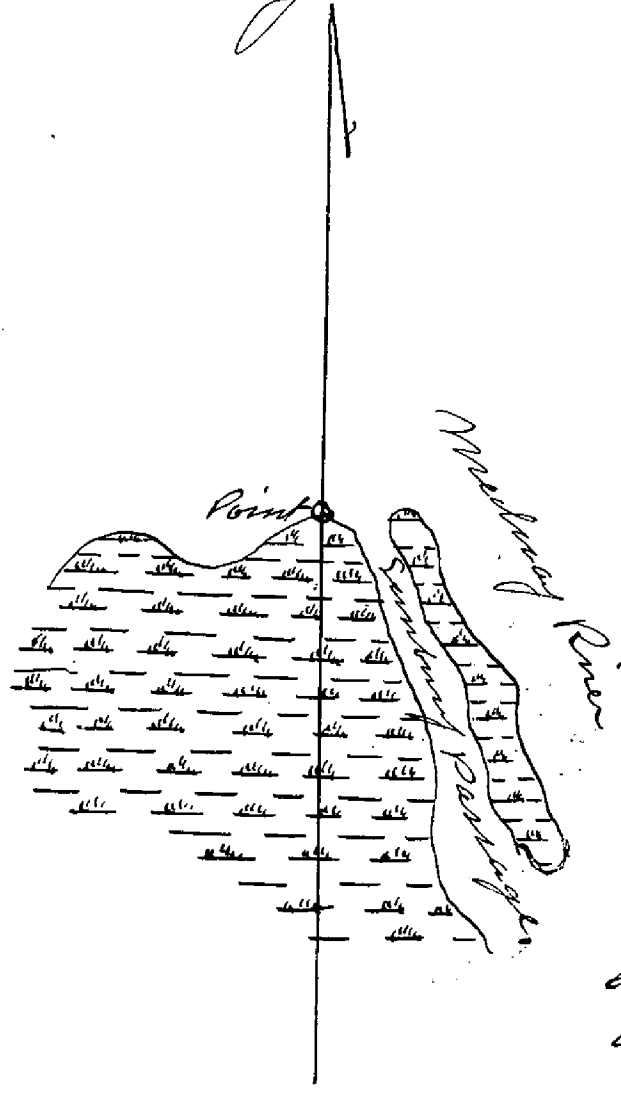
The station is located at the edge of the
marsh on the left-hand or northern shore of
the Mulvey River and set-up from
Sennett's Creek



Duplicate,
Department of Commerce and Labor
C. H. Jerney,

Point Topog Signal, Liberty (off) Mt. Ga. March 3^d 1904
Platform Signal.

This signal is comprised of 4 Posts let-in to the
mud. band with diagonal and side braces. The
Pole is a Yellow Pine 3" diameter let-in to
the mud about 7 feet and nailed to the diag-
onals. The pole has a white flag and a red and
White Swoosh. Signal is located at the edge of the
marsh on the right-hand or Southern shore
of the Midway River, and the usual printed
Notice of Warning was tacked to the pole.



Stetson Jerney
and C. H. Jerney

Duplicate.

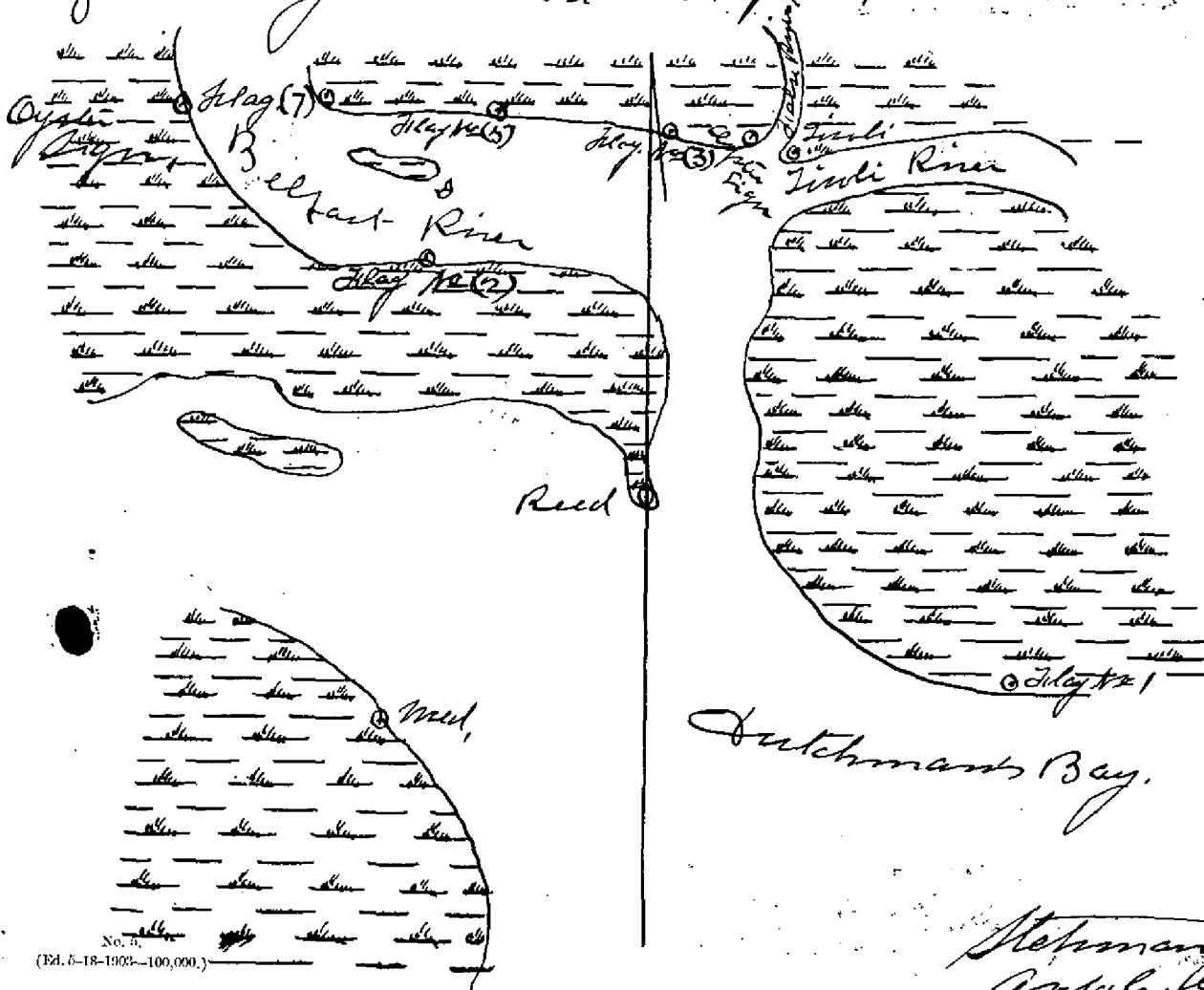
11
11

Department of Commerce and Labor

64. Survey,

Reed Topog Signal Bryan County Ga. March 3^d 1904
Platform Signal.

This signal is located at the mouth of the Belfast River on the right-hand or West-Shore of that river on a point of marsh. The signal is comprised of 4 parts let in to the mud about 7 feet and braced by diagonal and cross braces. The pole is a Yellow Pine one 16 feet long 3" diameter sunk in to the mud about 7 feet and nailed to the diagonals and flume braces. The pole has a red flag and red binnacle on its top. The usual printed notice of warning was tacked to the pole.



Stephanus J. J. J.
Capt. C. S. J. J.

Duplicate.

12

12

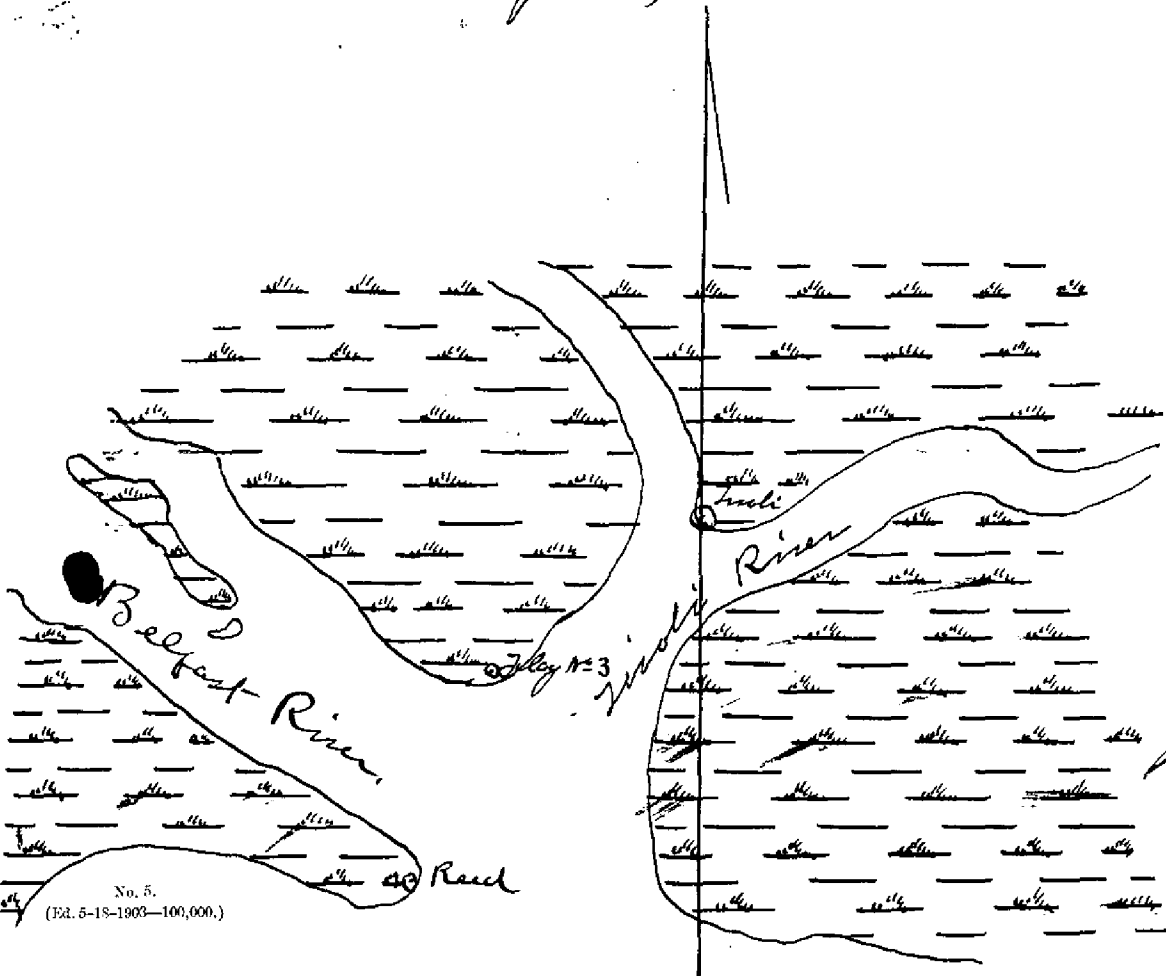
Department of Commerce and Labor

C. G. Jolley.

Sicoli, Topog. Signal. Bryan Canal, Ga. March 3^d 1904

Platform Signal.

This signal is located inside of the Sicoli River where it forks, on a point of marsh, and is comprised of 4 posts sunk in to the mud about ten feet, braced with diagonal and cross braces. The pole is a Yellow Pine one, 3" diameter and 16 feet long, set in to the mud about 5 feet and nailed to the diagonals and cross braces. The pole has a red flag on top and two white crosses. The usual printed notice of warning was tacked to the pole.

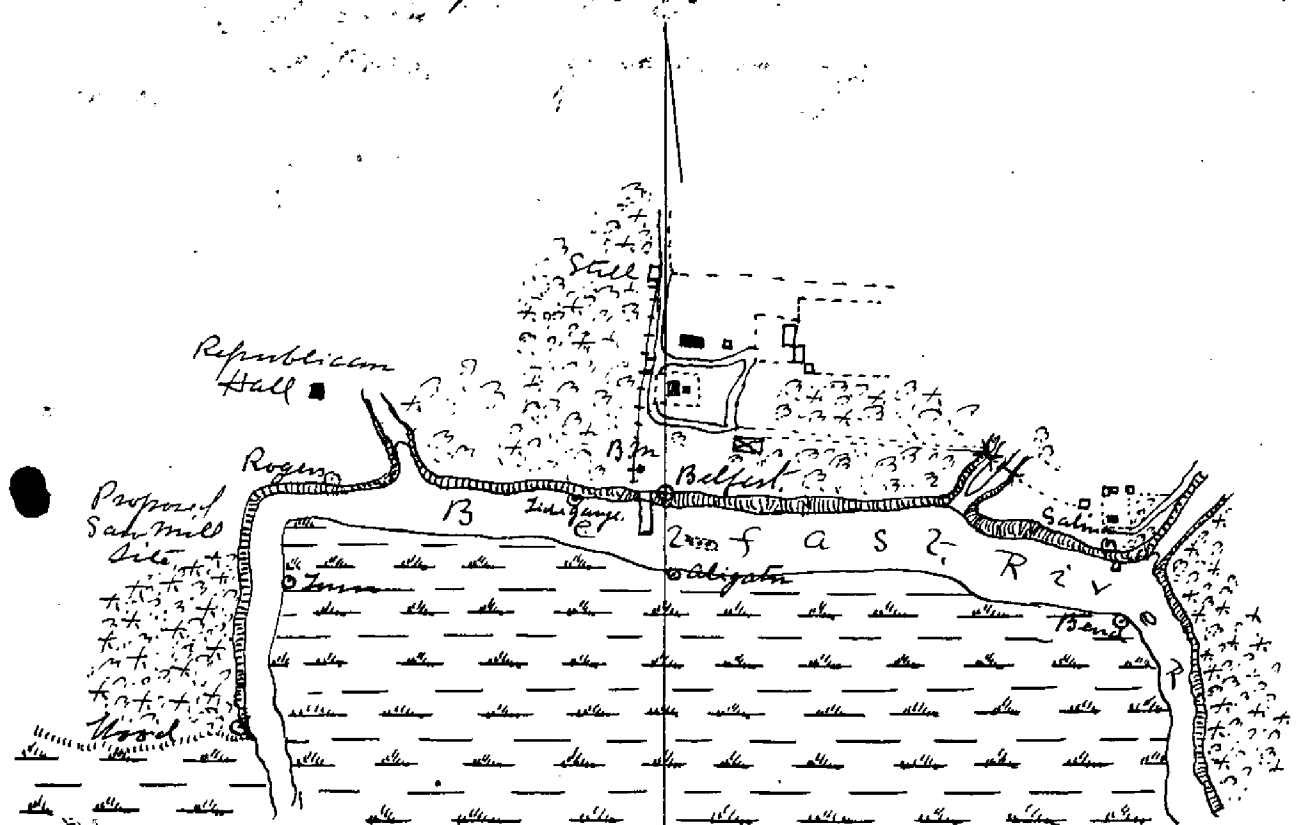


Victor Jolley
and C. G. Jolley

Duplicate
Department of Commerce and Labor
C. H. Torrey

Belfast. Topog. signal Bryan County Ga. March 3^d 1904

This station is located at Belfast Ga. on the north
bank of the Belfast-River near the old wharf about 20
meters east of it, on the bluff in front of Mr. Bethel's
house and about 40 meters from it, and about
20 meters east of a large live oak tree upon which
is located the Tidal Bench mark referred to the C & G
I Tide staff at Belfast Ga. The station is marked
by a yellow pine stake 2" in diameter set in to
the ground 18 inches, on this rests a pole 2" in diam-
eter 16 feet long supported by 4 braces with cross
ties and struts. The signal has two white flags
on its top. The usual printed notice of warning
was attached to the signal pole.



William Torrey
Asst. C. H. Torrey

Duplicate.

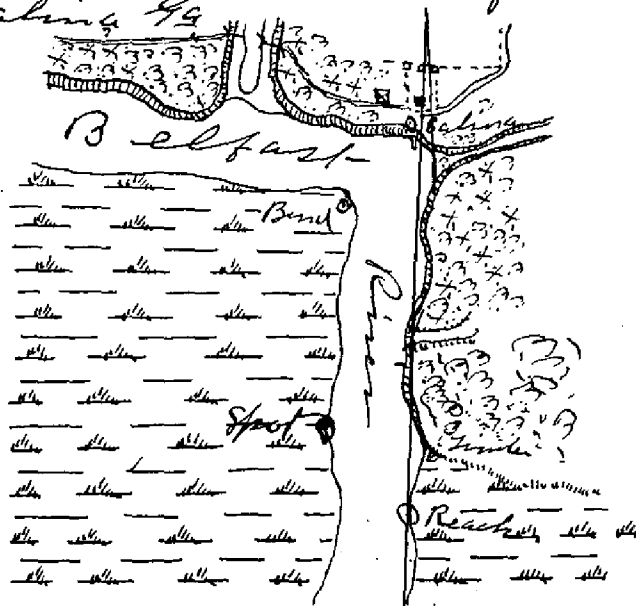
16
16

Department of Commerce and Labor
6 and 9 June

Platform Signal.

Reach Topog" Signal, Bryan County Ga. March 4, 1904

This signal is comprised of four posts-driven in to the ground, and supported by diagonal braces and cross ties. Signal pole is comprised of a Yellow Pine 3" diameter and 16 feet long. Pole has a red flag and white binnacle. The usual printed notice of warning was tacked to the pole. Sills were nailed on to the posts to support the level frame that was used to support the plane table and observer. Station is located on the left- or Eastern shore of the Belfort River South of Salina Ga.



Stehman Harvey
Assistant to S. H. King

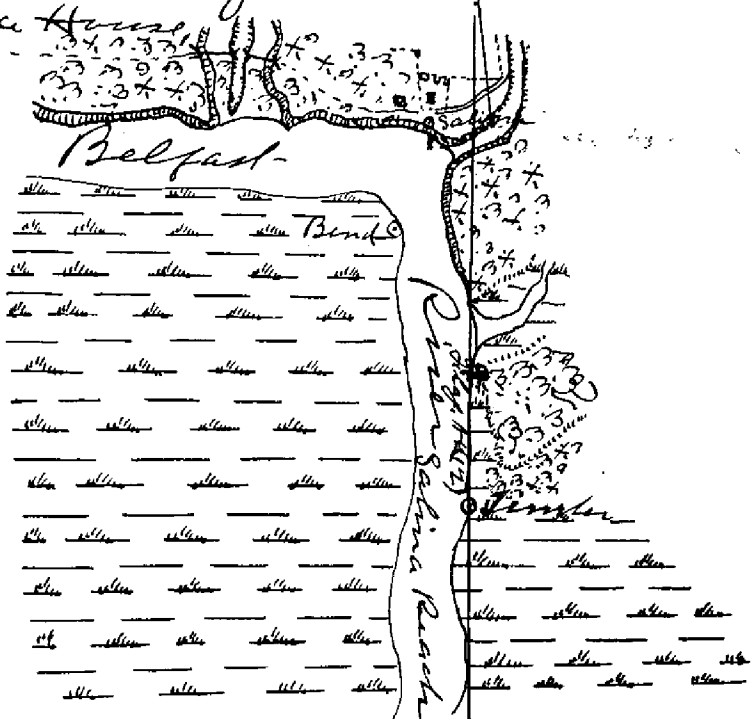
Duplicate.

Department of Commerce and Labor

C. H. Jolley

Platform Signal.

Zimmer Topog signal, Bryan County, Ga. March 4, 1904
This signal is comprised of 4 Posts let-in to the
ground about eleven feet, supported by diagonal
and cross braces with sills nailed to the posts on
which a board platform rested. Pole is com-
posed of a Yellow pine 3" diameter and
16 feet long let-in to the ground about 5 feet
and nailed to the diagonals and cross braces
The pole has two white bungs. The usual
printed notice of warning was tacked to the
pole. Station is located at the edge of the marsh
on the left or eastern edge of the Belfast River at
the last point of travel down River from
Salina House.



Stehman Jolley
Asst. C. H. Jolley

Duplicate.
Department of Commerce and Labor
Co. G. Survey.

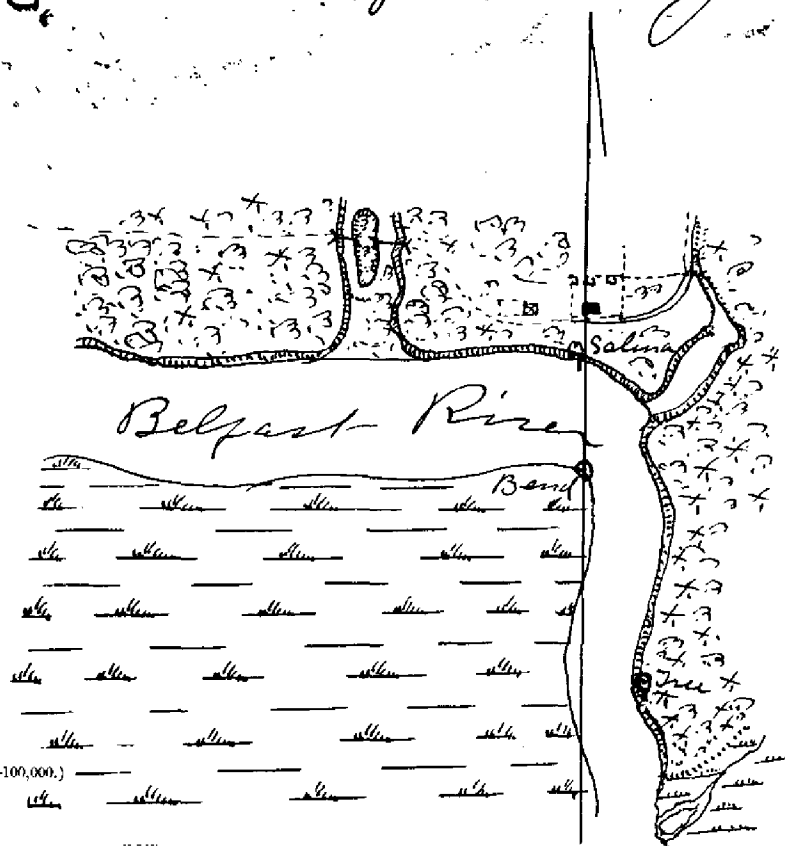
Platform Signal,

"Bend Topog" Signal, Bryan County Ga., March 4, 1904

This signal is comprised of 4 posts driven in to the mud 12 feet and braced with diagonal and cross braces, sills were nailed to the posts, on which the board platform rested that held the plane table and the topographer. Signal pole is a Yellow Pine 3" diameter and 16 feet long let in to the mud about 5 feet, and nailed to the diagonals and cross braces.

The station is located at the edge of the marsh on right bank or Western shore of the Belfast River on the Point where the river makes a sharp turn to the Westward, and opposite Salina House.

Signal pole has a white flag and red sponge. The usual notice of warning was tacked to the pole.



Stephen J. Honey
Capt. Co. G. Survey

Duplicate.

Department of Commerce and Labor

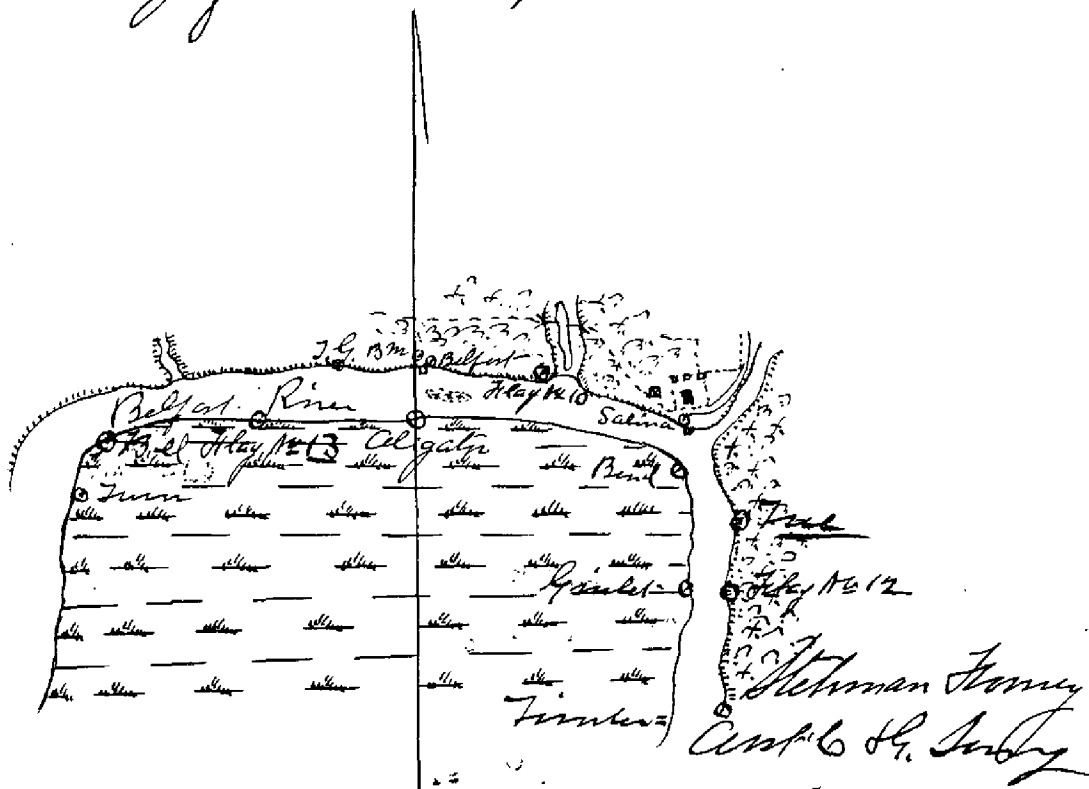
C. H. Jolley

Platform Signal.

Aligator Topog. Signal Bryan County, Ga. March 4, 1904

This signal is comprised of 4 Posts driven about 11 feet in to the ground (round) braced with diagonal and cross braces. Sills were nailed to the posts to hold the board platform on which the Plane Table and Topographer stood. Signal pole is comprised of a Yellow-Pine pole 3" diameter 16 feet long let-in to the ground about 5 feet, and nailed to the diagonals and cross braces. The pole has a red flag and white pennant. The usual notice of warning was tacked to the pole.

Station is located on the right-hand or Southern shore of the Belfort River about opposite the Belfort Wharf at the edge of the marsh.



Duplicate.

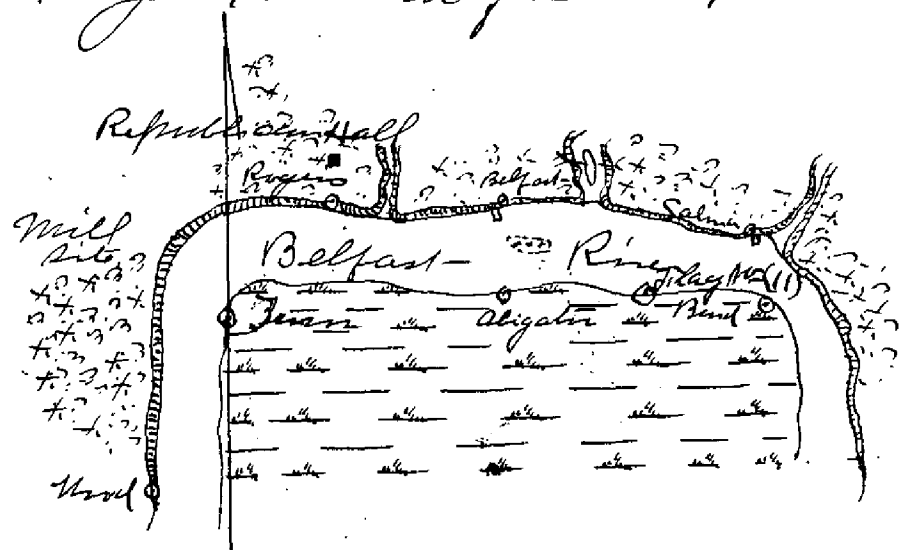
Department of Commerce and Labor

C. H. Jurey,

Platform Signal.

From Topog signal, Bryan Court, Ga., March 4, 1904

This signal is comprised of 4 posts sunk in to the mud about 11 feet, and braced with diagonals and cross braces, Sills were nailed to the cross braces and posts to hold the board platform on which the Plane Table and Topographer stand. Signal pole is comprised of a yellow pine 3 in diameter and 16 feet long, set in to the mud 5 feet and nailed to the diagonals + cross braces. Pole has a white flag and white sponge. The mud notice of warning was tacked to the pole. Station is located on the right-hand or Southern shore of the Belfast-River on the first point-up river from Belfast-Me. and where it makes a sharp turn to the Southward, on the edge of the marsh just beyond the turn of the river.



Duplicate.

21

Department of Commerce and Labor

C. H. Searcy,

21

Last "Topsy" Signal, Bryan Canal Co. March 4th 1904
Platform Signal.

This signal is comprised of 4 posts let in to the mud about 10 feet - braced with diagonals and cross braces. Sills were nailed to the posts and cross braces on which the board platform rested. The signal pole is comprised of a Yellow Pine Pole 3" in diameter 16 feet long, let in to the mud about 5 feet and nailed to the diagonals and cross braces. The pole has a red binnacle and white flag. The usual printed notice of warning was tacked to the pole. The station is located on the left or western shore of the Belfort River at the edge of the marsh near where the river makes a sharp turn to the westward about opposite End Signal.

For sketch of station see page 22.

Stationary

C. H. Searcy.

Duplicate.

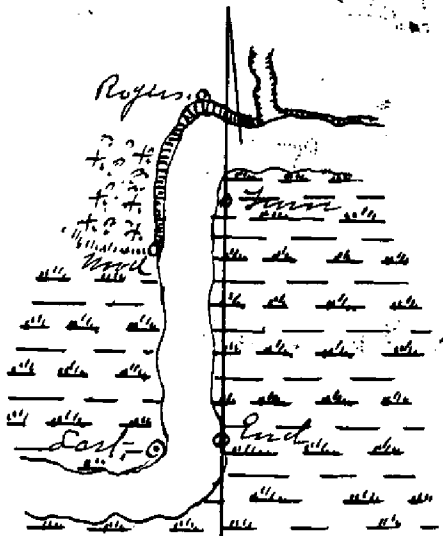
Department of Commerce and Labor

C. H. Harvey,

Platform Signal.

End. Topog. Signal Bryan County, March 4 "1904.

This signal is comprised of 4 posts set in to the mud about 12 feet, braced with diagonal and cross braces. Hills were nailed to the posts and cross braces on which the board floor rested, on which the Plan Table and Topographer stand. Signal pole is comprised of a Yellow Pine pole 3 in diameter 16 feet long, set into the mud about 5 feet and nailed to the cross ties and diagonals. The pole has a red flag and white orange. The usual printed notice of warning was tacked to the pole. Station is located on the right-hand or Eastern Shore of the Belfort River, near where it makes the sharp turn to the Westward and is the first signal up river from Juan Diaz wh.



Wetman Harvey,
Capt C. H. Harvey,

Duplicate.

23

Department of Commerce and Labor

C. H. Jerney

Platform Signal.

23

Delina Topog Signal. Bryan County Ga. March 4th 1904
This station is located on the north or left-hand shore
of the Belford-River, near the edge of the bluff and about
2 metres west of the path cut out of the bluff. Leading to
the small wharf at Salina House, signal is carried
around a Pine pole 16 feet long 4" diameter set in
to the ground about 18" pole has a white flag about
a white lounge with the usual printed notice of
Warning tacked to it, and is supported by four
truss with cross-ties and struts.

For sketch of locality see page 19.

Stephen Jerney,
Asst. C. H. Jerney,

Duplicate
 Department of Commerce and Labor

24

C. H. Jolley

Regen. Light Signal, Bryan Canal, Va. March 4th 1904

This station is on the left or northern shore of the Belfort River 92' on the edge of the bluff in front of Republic Can. Hall. The signal is comprised of a Pine pole 16 feet long 4 in diameter supported by 4 braces with cross ties and struts. Foot of signal rests on a Pine stake set into the ground 18 inches. Pole has two white bungs and a white flag. The usual printed notice of hoisting was tacked to the pole.

For sketch of the locality see page 29.

Stephen Jolley,
 Asst. C. H. Jolley

Duplicate,
Department of Commerce and Labor
C. H. Jolley,

25

Wood. Topy's signal, Bryan Camp 42. March 4, 1904
This station is situated on the left or western
shore of the Belfast River 42. At the end of a bluff
on the edge of the woods south of the Hilton and
Judge Sumner Co's new mill site. The signal
is comprised of a pine pole 16 feet long, 4 in
diameter supported by four trees with cross
ties and struts. Feet of the pole rests on a pine
stump 4 in diameter set in to the ground 18 in.
Pole has two white bangles and a white
flag on it. The usual printed notice of
warning was tacked to the pole.

For sketch of the locality - see page (20)

Stephen Jolley,
Capt. C. H. Jolley,

Duplicate.

26

Department of Commerce and Labor

26

C. H. Jolley,

Platform Signal.

West Topog Signal, Siberly Canal, Ga. March 7th 1904
This signal is situated at the edge of the marsh on
the right-hand or South shore of Hutchinsons Bay near
Way River, Ga. Signal is comprised of 4 poles let-
in to the mud about 11 feet, braced with diagonal
and cross braces. The pole is of Yellow Pine 16 feet
long 3ⁱⁿ diameter let-in to the mud about 5 feet
nailed to the diagonal and cross braces, and has
a white flag with white and red orange. The
usual printed notice of warning is tacked to
the pole.

For Sketch of Localities see Page (11)

Stetman, Jolley.

Ass't. C. H. Jolley.

Duplicate.

27

Department of Commerce and Labor

C. H. Jurney.

27

Platform Signal.

Spot: Topog. Signal. Bryan Camp 49. March 10, 1904
This signal is comprised of 4 posts-let-in to the
mud about-11 feet-and braced with diagonal
and cross braces, Sills are nailed to the posts
and diagonals on which a board floor rests, from
which the topographical work was done. Signal pole
is of yellow-pine 16 feet-long 3" diameter
let-in to the mud about-5 feet-and nailed
to the diagonals and cross braces. The pole has a
a red flag and white bunting on its-top. The usual
printed notice of bearing was tacked to the pole.
The station is located on the right-or western
shore of the Belgeet-River, at-the edge of the marsh
and is the first-Platform signal down River
from Bend Sta.

For sketch of locality-see Page (16)

Stephen Jurney.

Asst. C. H. Jurney.

Duplicate.

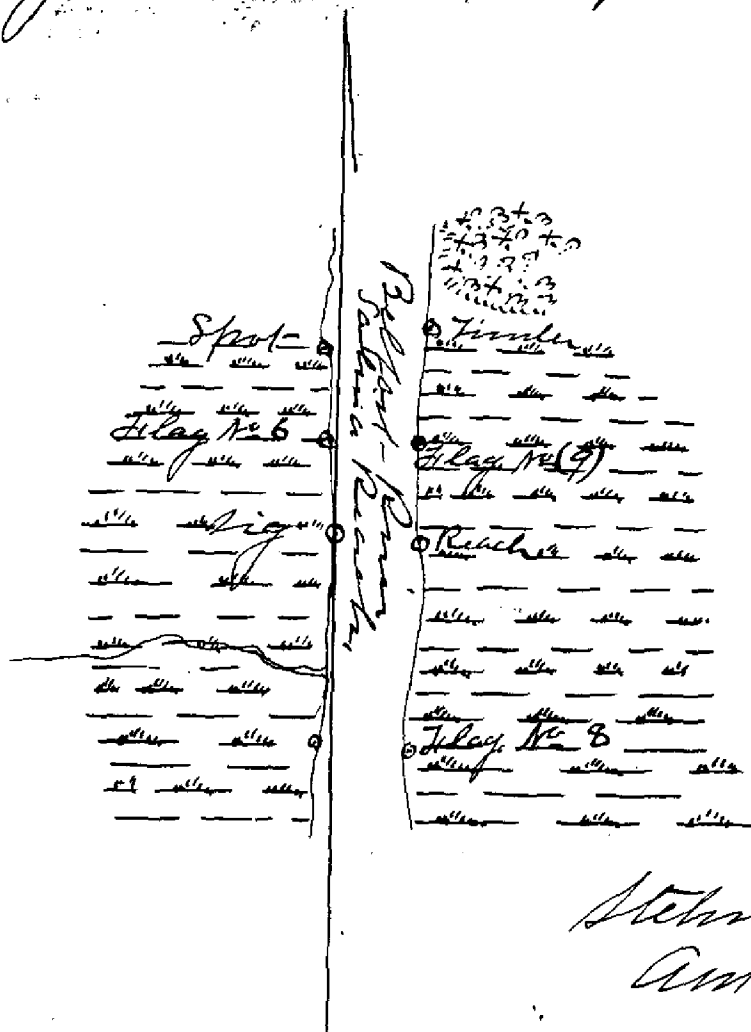
Department of Commerce and Labor

C. H. Jorney

Platform Signal.

Fig. "Jepoy" Signal Bryan Canal, Ga., March 10, 1904

This signal is an old Platform signal erected by Captain Cook, who made a private survey of the Belfort River in August-1903, for the Hilton and Lodge Lumber Company, and it is the third Platform signal down River from Salina, and is located on Right Bank or Western Shore of the Belfort River. The pole has a white flag and red binnacle on it; the usual printed notice of warning was tacked to the pole.



Stehman Jorney
Asst. C. H. Jorney

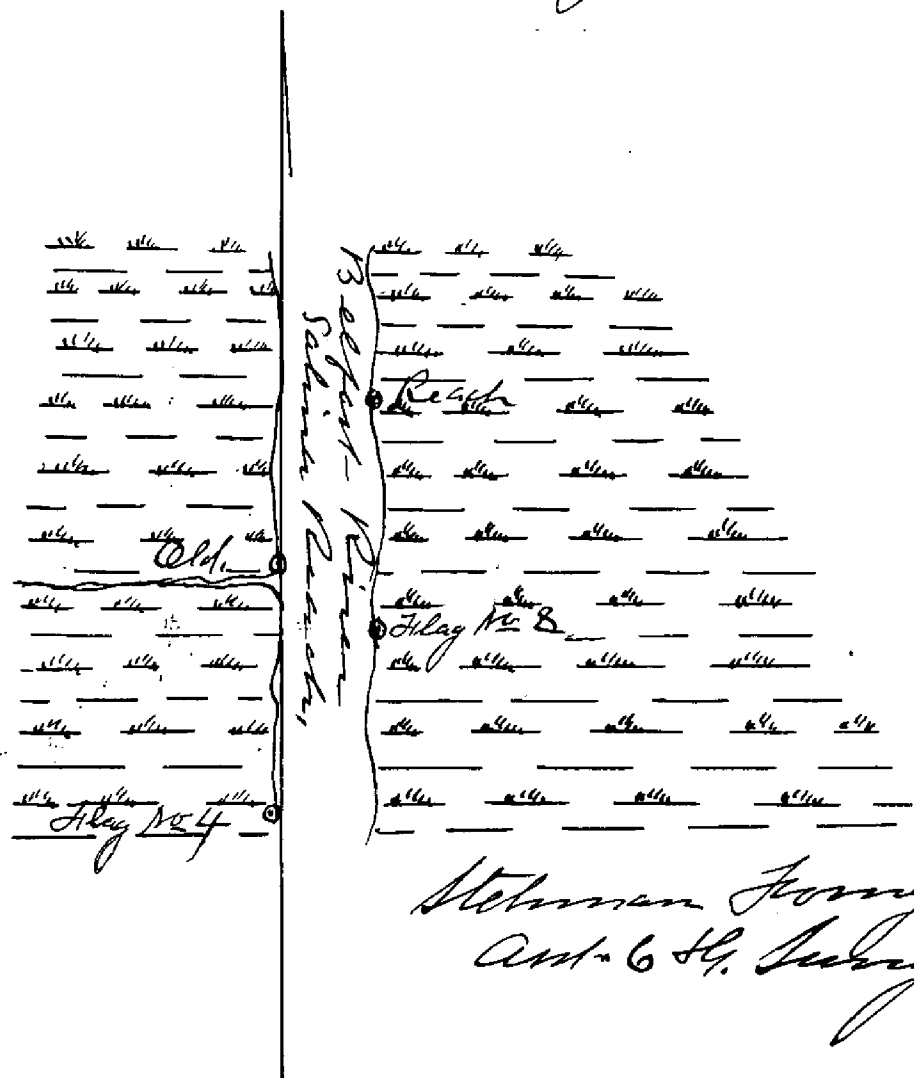
Duplicate

Department of Commerce and Labor

C. H. Murray
Platform Signal,

Old, Top of Signal, Bryan County, Ga. March 10, 1904

This is an old Platform signal built by Captain Cook who made a private survey of the Belfort-River in August 1903, for the Dillon and Dodge Sash and Company and is the fourth Platform Signal down river from Salinas; it is located on the right-hand or Western shore of the Belfort-River. The pole has a white flag and red message. The usual printed notices of warning has tacked to the pole.



Stetson Jones
Asst. C. H. Murray,

Duplicate,
Department of Commerce and Labor

36

Flag No. 1. Topog Bryan County Ga. March 8th 1904
Pole 16 feet long with red and white flags. Stick
in to the wood 7 feet. Usual notices of morning
tacked to the pole, is located on the left bank on
North shore of Dutchman's Bay Medway River,
on the 2nd shell bank down River from
mouth of Belfort River.

For sketch of locality - see Page, (8)

Stetman Jones,
Capt. C. H. Jones,

Duplicate.

31

Department of Commerce and Labor

31

C. H. Murray.

Flag No. (2) Topsy signal. Bryan Camp 49, March 10, 1904
Composed of a Yellow Pine pole 16 feet long stuck in to
the mud at the edge of the marsh and has two white
flays on it: it is located on the right-hand or Western
shore of the Redfoot River opposite the small island.

For sketch of locality - see Page No. (11)

Stetman Ferry.

C. H. Murray.

Duplicate.

Department of Commerce and Labor

32

C. S. Jerney.

Flag No. 3. Topsy signal marked on July 10th 1904. Bryan Canal, Ga.
is comprised of a pole 16 feet long stuck in to the
ground about 6 feet at the edge of the marsh, over
the South Point of the entrance to Fossil River
and has red and white flags on it. The
usual pointed notice of warning was tacked to
the pole. For sketch of locality, see Page, (1st)

*William Jerney,
Capt. C. S. Jerney*

Duplicate.

Department of Commerce and Labor

C. S. Survey,

33

Flag No. 4 "Fog" Signal, Bryan County, Ga., March 10, 1904
 Composed of a Yellow Pine Pole 16 feet long
 stuck in to the mud about 8 feet; and has a
 white and red flag. The usual printed notice of
 warning was tacked to the pole.

It is situated at the edge of the marsh on the
 Right-hand or Western Side of Belfast-River, Selma
 Reach, and is the first flag down River from
 Old Platform Signal,

For sketch of locality see page (29)

Metman Survey,

Comd. C. S. Survey

Duplicate

Department of Commerce and Labor

C. H. Harvey,

Flag No. 5. Top signed. Bryan Hunt, Lt., March 10, 1914
Composed of a Yellow Pine Pole 16 feet long 3 inches
diameter stuck in to the mud about 5 feet; has
two red flags. The usual printed notice of
warning was tacked to the pole.

It is situated on the edge of the Marsh on the
left hand or Northern side of the Belport-Pier
just below the small Island.

For sketch of locality see page, No. (11)

Stephen Harvey,

Comd'g C. H. Harvey,

Duplicate.
Department of Commerce and Labor
C. H. Harvey,

Flag No. 6, Topping signal, Bryan County Ga., March 10, 1904
Comprised of a Yellow Pine Pole 16 feet long, 3 in
diameter set into the ground about 5 feet. and
has two white flags on it. The usual printed
Notice of warning was tacked to the pole.

It is situated on the Right-Hand or Western Shore
of the Beaufort-River, at the edge of the marsh, Salina
Reach, between Spot and Big Platform signals,
For sketch of locality see page (28)

Stephen Harvey,
Asst. C. H. Harvey,

Duplicate.

Department of Commerce and Labor

36

C. H. Jerney,

Flag No. 7. "Doping" Signal, Bryan (Agent, Ala.) March 10th 1904
 Comprised of a Yellow Pine Pole 16 feet long 3 in
 in diameter set in to the mud about 5 feet. Has
 one white flag, and the usual Painted Notice of
 Warning tacked to the pole. Signal is situated on the
 Mandy Point where the River makes a sharp turn
 to the Estuary on the left shore of the Beaufort-River
 just above the large island.

For sketch of locality see page No. (11)

Duplicate.

Department of Commerce and Labor

C. H. Jolley

Flag No. 8. Topographic signal. Bryan Canal, No. 11, March 10, 1904.
 Composed of a Yellow Pine Pole 16 feet long 3 in
 diameter set in to the mud about 5 feet. Has
 one red flag and the usual notices of warning
 tacked to the pole. Is situated on the left-hand or
 Eastern shore of the Belgot-River Saline Reach at
 the edge of the marsh and is the first pole down
 River from Reach Platform signal.

For sketch of locality - see page, No. 28)

Stephen Jolley

and C. H. Jolley

Duplicate.

Department of Commerce and Labor

C. H. Surrency,

Flag No. 9, Topping Signal, Bryan Point Sta. March 10, 1904

Composed of a Yellow Pine Pole, 16 feet long 3 in diameter set in to the mud about 5 feet, has white and red flags, and the usual notice of warning tacked to it. It is situated on the left hand (i.e.

Eastern) shore of the Beaufort River, Salina Reach, between Timber and Reach Platform Signals, for sketch of locality see page No. 28

Stephen Surrency,

Asst. C. H. Surrency

Duplicate.

(39)

Department of Commerce and Labor

39

C. H. Murray.

Flag No 10, Topog^o signal, Buysell County, Ga. March 10, 1904
Composed of a Yellow Pine pole 16 feet long 3 in
in diameter let in to the ground on the edge
of the bluff about 2 feet, has a white flag and
the usual notice of warning tacked to the pole.

The station is on the Left hand on northern
shore of the Buford River, and is the first signal
west of Salina signal.

For sketch of locality - see page (19)

Walter Murray.

Asst. C. H. Murray

Duplicate,
Department of Commerce and Labor

4.0

Flag No. (11) Dup. Signal. Project. Comd. 42. March 19, 1904

Composed of a Yellow Pine Pole 16 feet long, 3 in diameter stuck in to the ground about 7 feet, has 2 white flags and the usual notice of being attached to it. It is located at the edge of the marsh on the right-hand or southern shore of the Red Fox River between Bend and Aligator platform signals.

For sketch of locality, see page (20)

Stetman Jones,
Capt. C. H. Jones

Duplicate,
Department of Commerce and Labor
C. H. Survey

Flag. No. 12, "Judy" Signal, Baylen Canal, Ala. March 10, 1904

This signal is located on the bluff at Suggs' Old Wharf on the left-hand or eastern shore of the Baylen River (Saline Reach) and is the first flag up river from

Timber Platform signal, is comprised of a pine pole stuck into the ground with a white flag on it. The usual notice of warning was tacked to the pole.

For sketch of locality see page (17)

Stetman Herring,
Asst. C. H. Survey

Memorandum,
Department of Commerce and Labor

42

42

Flag No. 13, Foggy" signal, Bryan County Ga., March 11, 1904

This signal is located on the right-hand or Southern
Shore of the Beaufort River at the edge of the marsh, and
is the first signal up river from Aligator. It is
composed of a Yellow Pine Pole stuck in to the
ground about 7 feet. Has two white flags and the
usual notice of warning tacked to it.

For sketch of the locality see page (19)

Stephen H. Horney,
Asst. C. H. Horney,

Duplicate.

Department of Commerce and Labor

C. H. Jolley,

Bell Topog. Signal. Bryan (Adj. Lt.) March 10, 1904

This signal is located on the right-hand or South-
ern side of the Belfast River at the edge of the marsh at
the land where the River makes a sharp turn to the South West
of Belfast Wharf and is the second signal pole up river
from Alligator Platform signal. Signal is com-
posed of a Yellow Pine Pole 16 feet long 3 in diam-
eter stuck in to the ground about seven feet. Has
one white flag and the usual notice of warning
tacked to it.

For sketch of locality see page (19)

Stetman Jolley,

C. H. Jolley,

Duplicate,
Department of Commerce and Labor
C. H. Jolley,

44

Ginslet, Topog. Signal, Bryan County Ga., March 12, 1904.

This signal is located on the right-hand or Western shore of the Beaufort-River at the edge of the marsh, it was placed there and used by Mr. Ginslet of Savannah Ga. A Civil Engineer who made a private Hydrographic Survey of this part of the Beaufort-River for the Hillman & Dodge Lumber Company, in January & February 1904. It is composed of a Yellow Pine pole stuck in to the mud, and has one white flag on it, and is the first flag pole down river from Beaufort Platform signal.

For sketch of the locality see page (19)

Stephen Jolley,
Capt. C. H. Jolley,

Duplicate.

45

Department of Commerce and Labor

C. H. Jolley,

45

True Zepher Signal, Bryan Point - Ga., March 12, 1914
This signal is located on the left-hand or Eastern
shore of the Beaufort-River about half way between Suggers
Old Wharf and Salina Wharf. It is comprised of a large
Pine tree that stands near the edge of the bluff. And has
a piece of Signal Cloth tacked to it about six feet from
the ground. The tree was bled, and the usual printed
notice of warning was tacked to the bled part.

The Method of Locality - see page (19)

Stephen Jolley,

Asst. C. H. Jolley,

Duplicate.

Department of Commerce and Labor

46

46

C. H. Jerney,

Oyster Sign, Tappan Signal, Bryan County, Ga. March 12, 1904

This signal is located at the edge of the marsh on the Right-hand or Southern Shore of the Belfast-River in the Parish of the River at the Southern end of Baline Reach, and is the first Oyster Sign, down River from Old Plot from signal. It is comprised of a post set in the mud with a board nailed on it at right angles, and makes a prairie-Oyster bed.

For sketch of locality see page No. (11)

Stephen Jerney,

Asst. C. H. Jerney,

It is the first Oyster Sign up River from Tappan No. 2 and is just opposite Tappan No. (7).

Duplicate.

Department of Commerce and Labor

C. H. Jerny.

Oyster Sign, "Tupug" Signal, Bryan Canal Co. March 14, 1904

This signal is located on the right-hand or Western
Shore of the Tivoli River at the edge of the marsh, on a
point of marsh opposite Tivoli Platform Signal. When
Tale River empties in to the Tivoli, it is comprised
of a part set in to the marsh with a board nailed on
it at right angles.

For sketch of locality - see page (11)

Stetman Jerny.

Asst. C. H. Jerny.

Duplicate

Department of Commerce and Labor

C. S. Survey,

48

48

Flag No. 14. Fogging Signal. Bryan Point, Ga. March 16, 1904

This signal is located on the left bank or Eastern Shore of Surrency Passage of the Mulway River, at the edge of the Marsh, and is the first flag pole up River from Surrency, and is opposite Flag No. 15. It is comprised of a Yellow Pine pole 16 feet long 3" diameter set in to the ground about 7 feet, and has a red and white flag, with the usual printed notice of warning tacked to it.

For sketch of locality - see page (9)

Stetman J. J. Survey,

Comd. C. S. Survey,

Supplement.
Department of Commerce and Labor
C. H. Jolley.

49

49

Flag No 15, Foggy Signal, Liberty Sound, Va., March 16, 1914.

This signal is located on the right-hand or western shore of Skunking Passage, of the Roanoke River, at the edge of the marsh opposite flag No 14, and is the first flag pole up river from Skunking. It is comprised of a Yellow Pine pole 16 feet long 3" diameter set in the ground about seven feet, and has two white flags with the usual printed notice of warning tacked to it.

For sketch of locality - see page (9)

Stetman Jolley,
Asst. C. H. Jolley.

Duplicate
Department of Commerce and Labor

6th St. Survey

Signs. Nos 1-2-3-4-5-6-7-8-9. Topog Signals

Schenck-County, Ga. March 16th 1904.

These signals are located on the right-hand or Southern
and Northern shores of Hutchinsons Bay and Secondary
arms of the Medway River at the edge of the Marsh. and
extend from along Gage No 15, to Point-Platform
Signal and from Point-Platform Signal to
Med Platform Signal. They are comprised of posts
let in to the wood with bands nailed on them at
right angles, and mark fine crystal beds.

For sketch of localities see pages 9 and 8.

Wetman Frimley
Asst. C. S. Survey