

NOAA COASTAL MAPPING PROGRAM PROJECT COMPLETION REPORT

PROJECT FL1809A-CM-N

Back Canals, Boynton Beach to Highland Beach, Florida

Introduction

NOAA Coastal Mapping Program (CMP) Project FL1809A-CM-N provides a highly accurate database of new digital shoreline for several canals extending further inland of the Intracoastal Waterway from Boynton Beach to Highland Beach, in Florida. This is a subproject of a larger imagery acquisition project, FL1809-CM-N, which was designed to provide coverage of the ICW and various other navigable canals in Florida from Boynton Beach to Little Lake Canal. The Geographic Cell (GC) may be used in support of the NOAA Nautical Charting Program (NCP) as well as geographic information systems (GIS) for a variety of coastal zone management applications.

Project Design

Photographic mission instructions for FL1809-CM-N were formulated by the Requirements Branch (RB) of the Remote Sensing Division (RSD) following the guidelines of the Photo Mission Standard Operating Procedures. The instructions detailed the project's purpose, geographic area of coverage, scope and priority, image requirements, Global Positioning System (GPS) data collection procedures and guidelines, instructions for data recording and handling, and mission communication protocols. RB created a Project Layout Diagram, flight maps and input files for the aircraft flight management system.

Field Operations

The field operations for FL1809-CM-N consisted of the collection of static and kinematic GPS data and Inertial Measurement Unit (IMU) data, and the acquisition of non-tide coordinated aerial imagery. Aerial imagery was acquired using Applanix Digital Sensor System (DSS) dual cameras with the NOAA King Air aircraft (N68RF) from April 2019 to September 2021. A total of eight flight lines of natural color (RGB) and near-infrared (NIR) imagery were acquired concurrently at a nominal altitude of 10,500 feet. Lines 62-007 and 62-008 were collected in April 2019 using a DSS 580/560 with ground sample distances (GSD) of 0.32 meters for RGB imagery and 0.38 meters for NIR, and lines 62-001 through 62-006 were collected in September 2021 using a DSS 6150/6100 with GSDs of 0.23 meters for RGB and 0.29 meters for NIR. A subset of one line of imagery was used for FL1809A-CM-N.

Direct Georeferencing Data Processing

The GPS/IMU data were processed by RSD personnel to yield precise camera positions and orientations for direct georeferencing (DG) of the imagery. The Airborne kinematic data for project FL1809A-CM-N was processed in November 2021 using Applanix POSPac MMS (ver. 8.7) software, utilizing the IN-Fusion PP-RTX processing mode, which is an implementation of Trimble's *CenterPoint RTX* GNSS correction service. For further information refer to the

Airborne Positioning and Orientation Reports (APOR) on file with other project data within the RSD Electronic Data Library.

The processed GPS/IMU data were used to derive precise exterior orientation (EO) values of the camera centers required for digital feature extraction. The predicted horizontal accuracy of the imagery was calculated using an Exterior Orientation Total Propagated Uncertainty (EO-TPU) tool developed by NGS. Using this tool, the predicted horizontal uncertainty at the 95% confidence level was calculated to be 0.61 meters. NGS third order control was used to verify the horizontal integrity of the DG data. All stereo models were examined and found to have acceptable levels of parallax for mapping purposes.

Compilation

The data compilation phase of this project was completed by RSD Applications Branch (AB) personnel in August 2022. Digital mapping was performed using the Feature Extraction software module within SOCET SET (ver. 5.6). Feature identification and attribution within the GC were based on image analysis of the aerial imagery and information extracted from the largest scale NOAA nautical charts and other ancillary sources. Feature attribution was assigned in compliance with the Coastal Cartographic Object Attribute Source Table (C-COAST), which provides the definition and attribution scheme for the full range of cartographic features pertinent to the CMP. Selected features were further modified with additional descriptive information to refine general classification.

Spatial data accuracies for project FL1809A-CM-N were determined according to standard Federal Geographic Data Committee (FGDC) practices. Cartographic features compiled from directly georeferenced images were compiled to meet a horizontal accuracy of 1.2 meters, a predicted accuracy of well-defined points measured during the compilation phase, derived by doubling the imagery accuracy computed from the EO-TPU tool.

The table below provides detailed information on the image sources used:

| Date | Time (UTC) | RGB Imagery | | Tide Level* |
|-------------|---------------|-------------|------------------|-------------|
| | | Roll | Strip / Images | |
| 19-Sep-2021 | 14:27 – 14:30 | 21VC02 | 62-001 / 06 – 22 | N/A |

* The area covered by this project is non-tidal.

Quality Control / Final Review

Quality control (QC) tasks were conducted by a senior member of the RSD. The final QC review was completed in September 2022. The review process consisted of an assessment of the identification and attribution of cartographic features according to image analysis and criteria defined in C-COAST. The quality control process concluded with an inspection of topological connectivity within the GC using ArcGIS (ver. 10.8.2). All project data was evaluated for compliance to CMP requirements.

Comparisons of the largest scale NOAA nautical charts with source imagery and compiled project data resulted in creation of the Chart Evaluation File (CEF). The following ENC's were used in the comparison process:

- ENC US4FL31M, 52nd Ed., May 2022, Scale 1:80,000

End Products and Deliverables

The following specifies the location and identification of the products generated during the completion of this project:

Remote Sensing Division Electronic Data Library

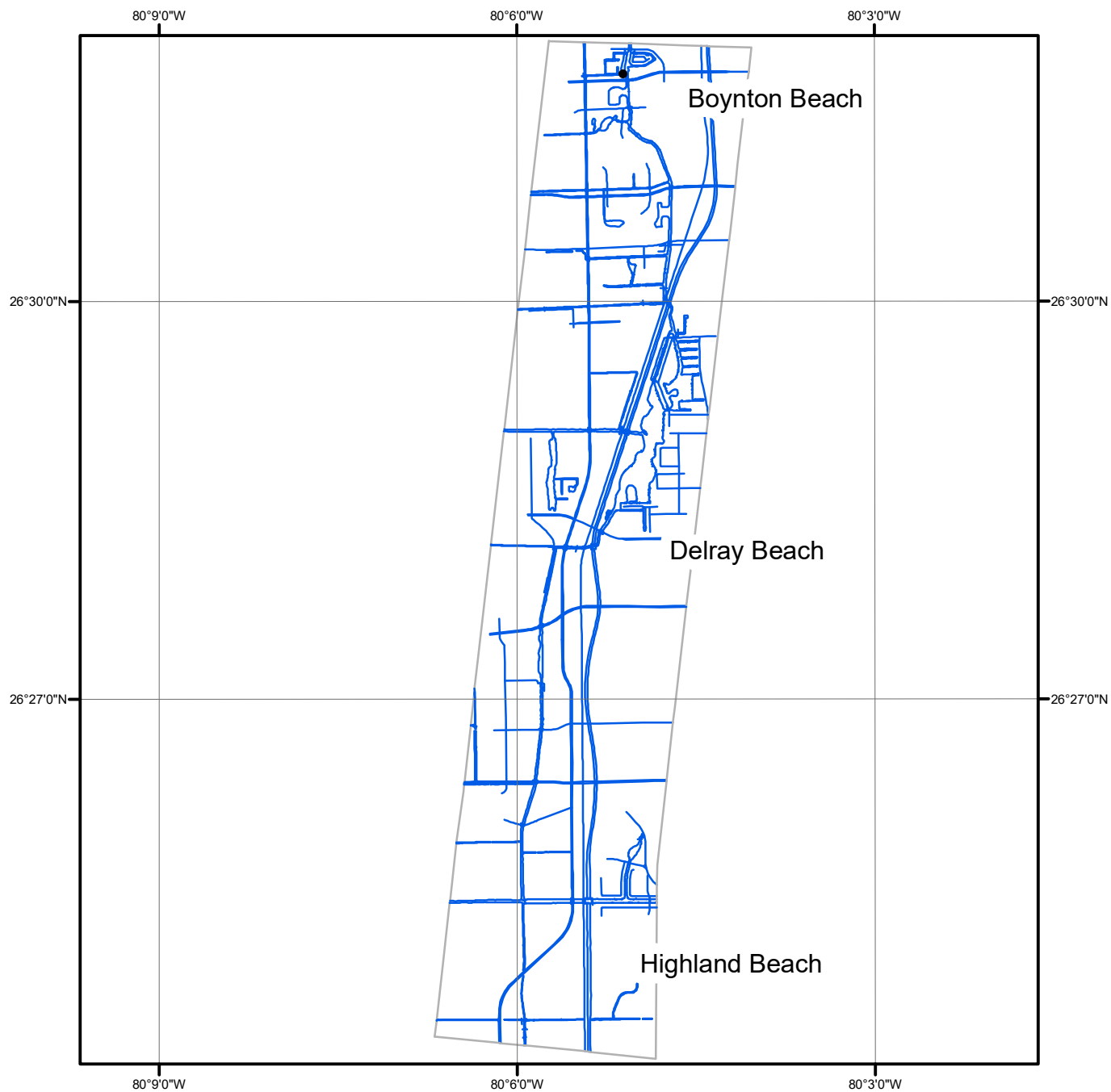
- Project database
- Airborne Positioning and Orientation Reports
- GC11756 in shapefile format
- Project Completion Report (PCR)
- CEF in shapefile format

NOAA Shoreline Data Explorer

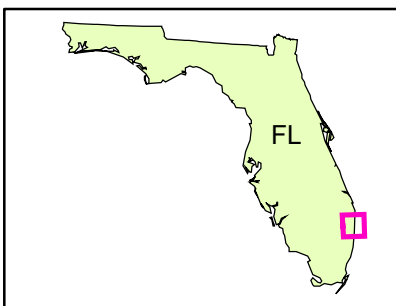
- GC11756 in shapefile format
- Metadata file for GC11756
- PCR in Adobe PDF format

End of Report

BACK CANALS, BOYNTON BEACH TO HIGHLAND BEACH FLORIDA



Overview



FL1809A-CM-N

GC11756