

NOAA's National Geodetic Survey, Remote Sensing Division and Quantum Spatial Hurricane Florence Supplemental



National Oceanic and Atmospheric Administration



National Geodetic Survey

Mission: Define, maintain and provide access to the National Spatial Reference System.

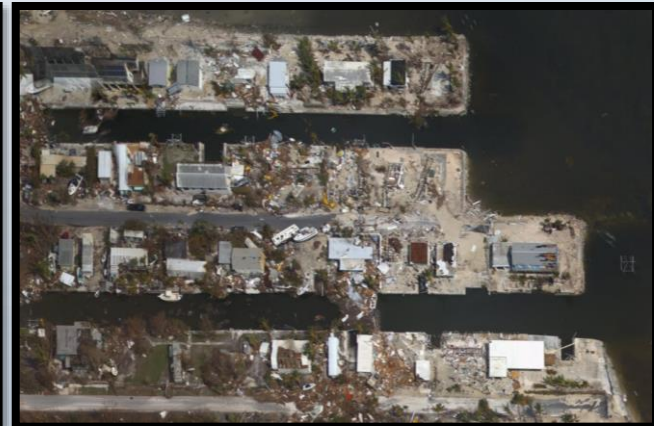
RSD Primary Programs:



Aeronautical Survey
Program



Coastal Mapping
Program

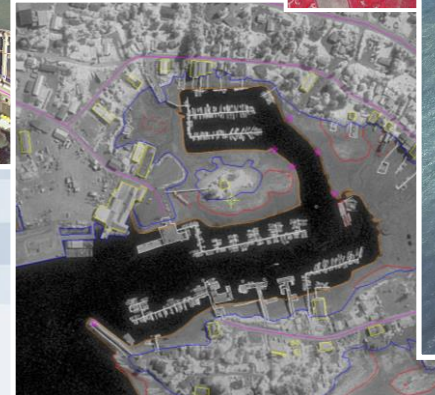
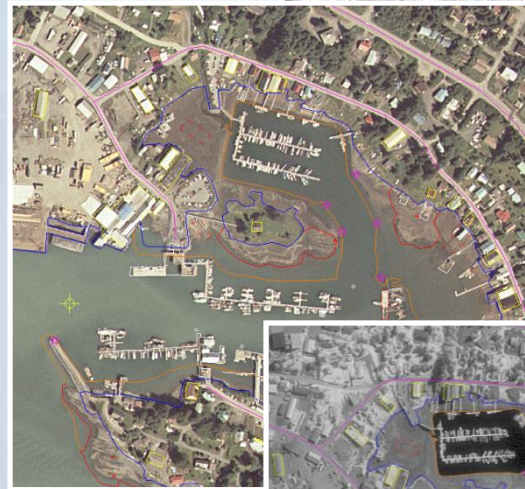


Emergency Response

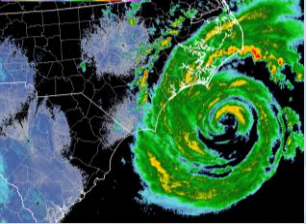


The RSD Coastal Mapping Program

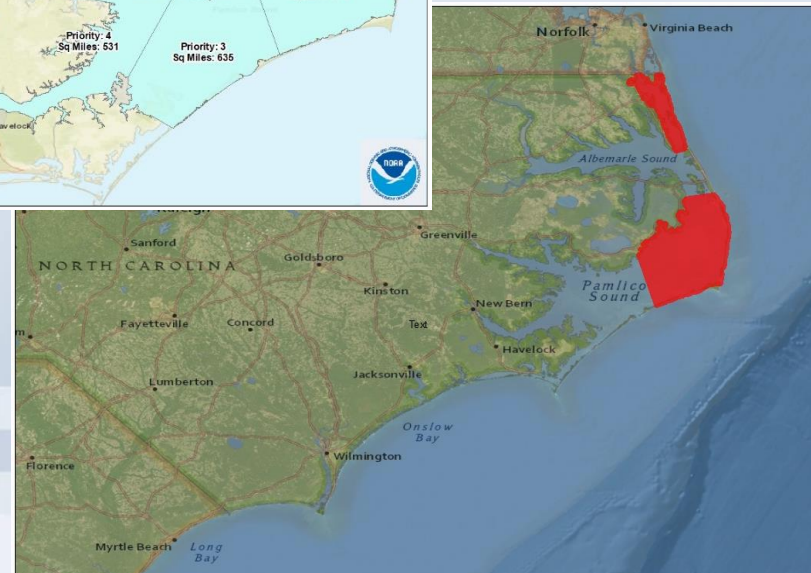
- A congressional mandate to conduct remote sensing surveys of coastal regions of the United States and its possessions for demarcating the nation's legal coastline.
- **Goals:**
 - Provide the Nation With Accurate, Consistent, Up-to-Date National Shoreline
 - Acquire Nearshore Elevation Data
- **Sources:**
 - Lidar
 - Digital Cameras
 - High Resolution Satellites



Hurricane Florence



- Deep Channel Lidar

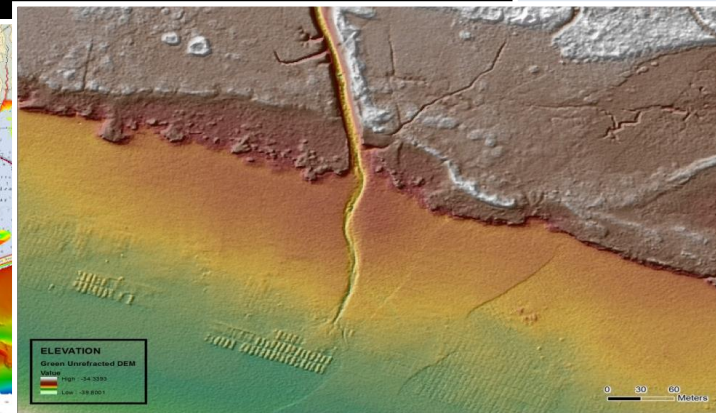
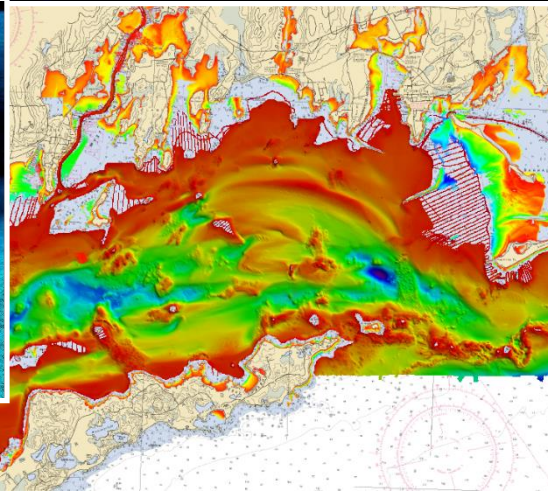
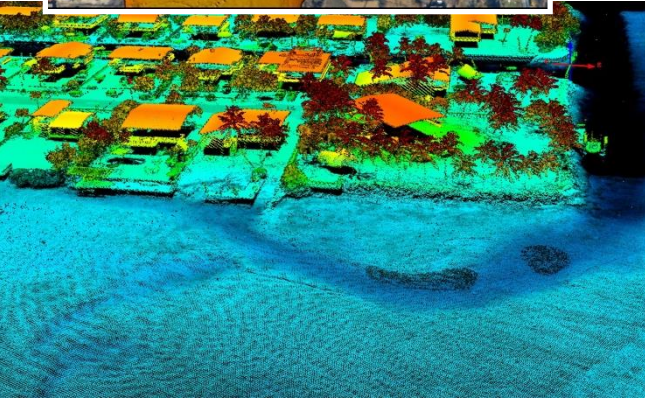
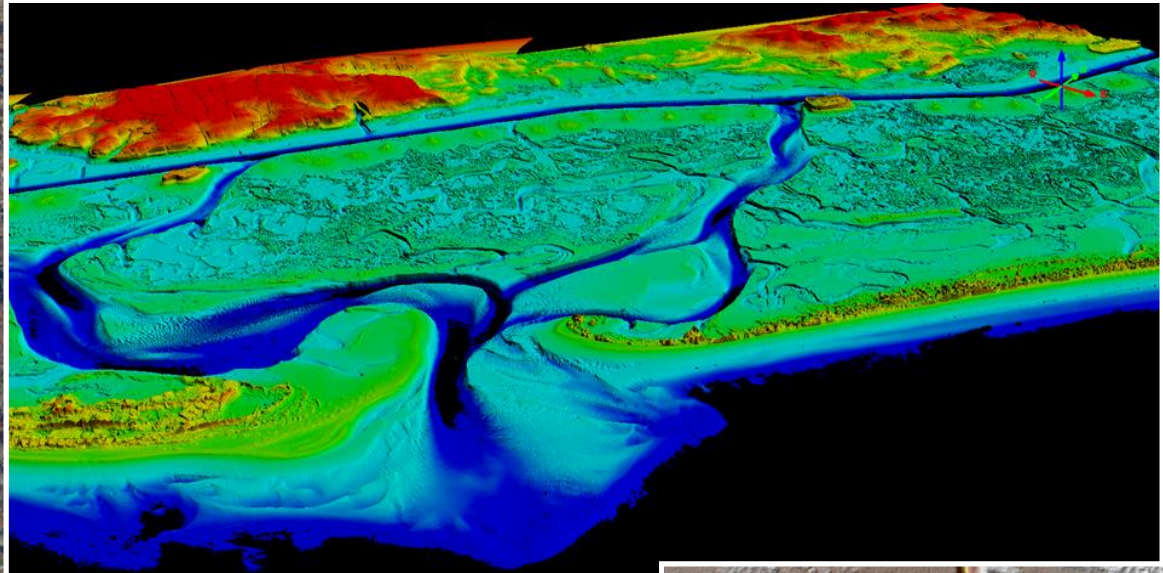
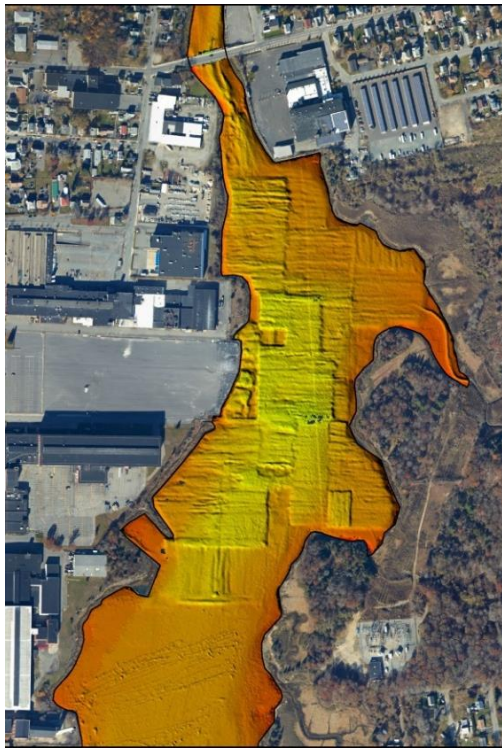


- Narrow FOV Topobathy Lidar
- Digital Imagery (Stereo/Orthos)
- Shoreline



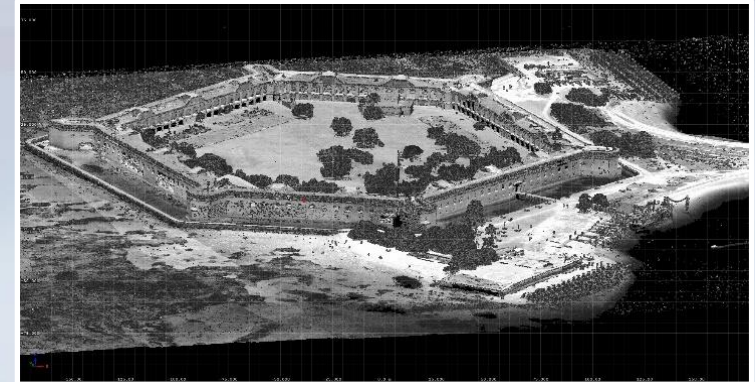
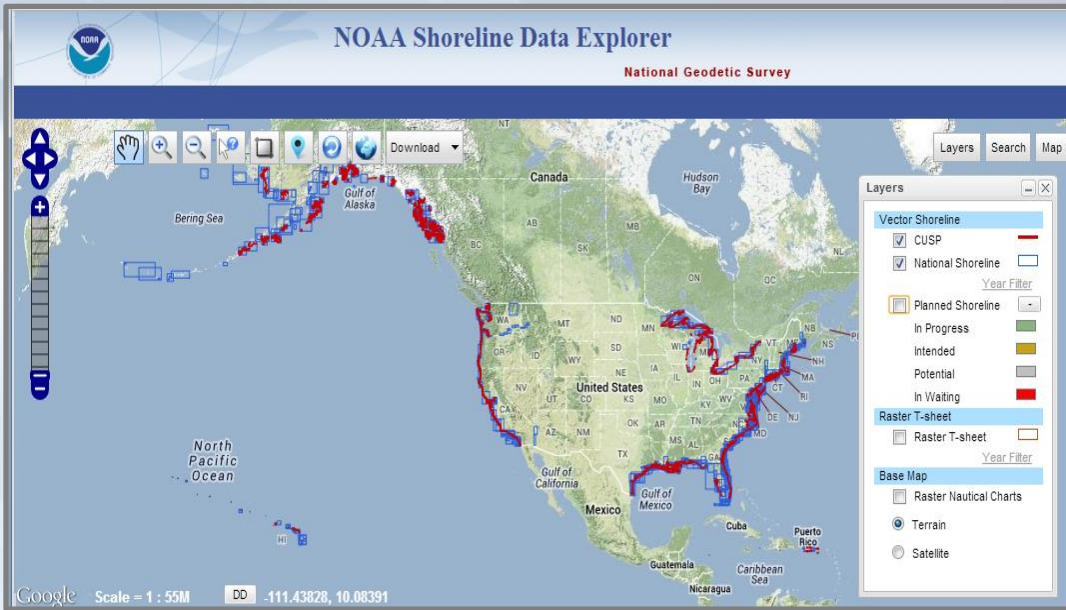
National Oceanic and Atmospheric Administration

NGS's Topobathy lidar data



National Oceanic and Atmospheric Administration

Distribution of Data



Shoreline (<http://www.ngs.noaa.gov/NSDE/>)

DigitalCoast
OFFICE FOR COASTAL MANAGEMENT

More Than Just Data
Dive into the Digital Coast to Get the Data, Tools, and Training Communities Need to Address Coastal Issues.

DATA TOOLS TRAINING STORIES TOPICS

Lidar and Imagery:

<https://coast.noaa.gov/digitalcoast/>



National Oceanic and Atmospheric Administration

